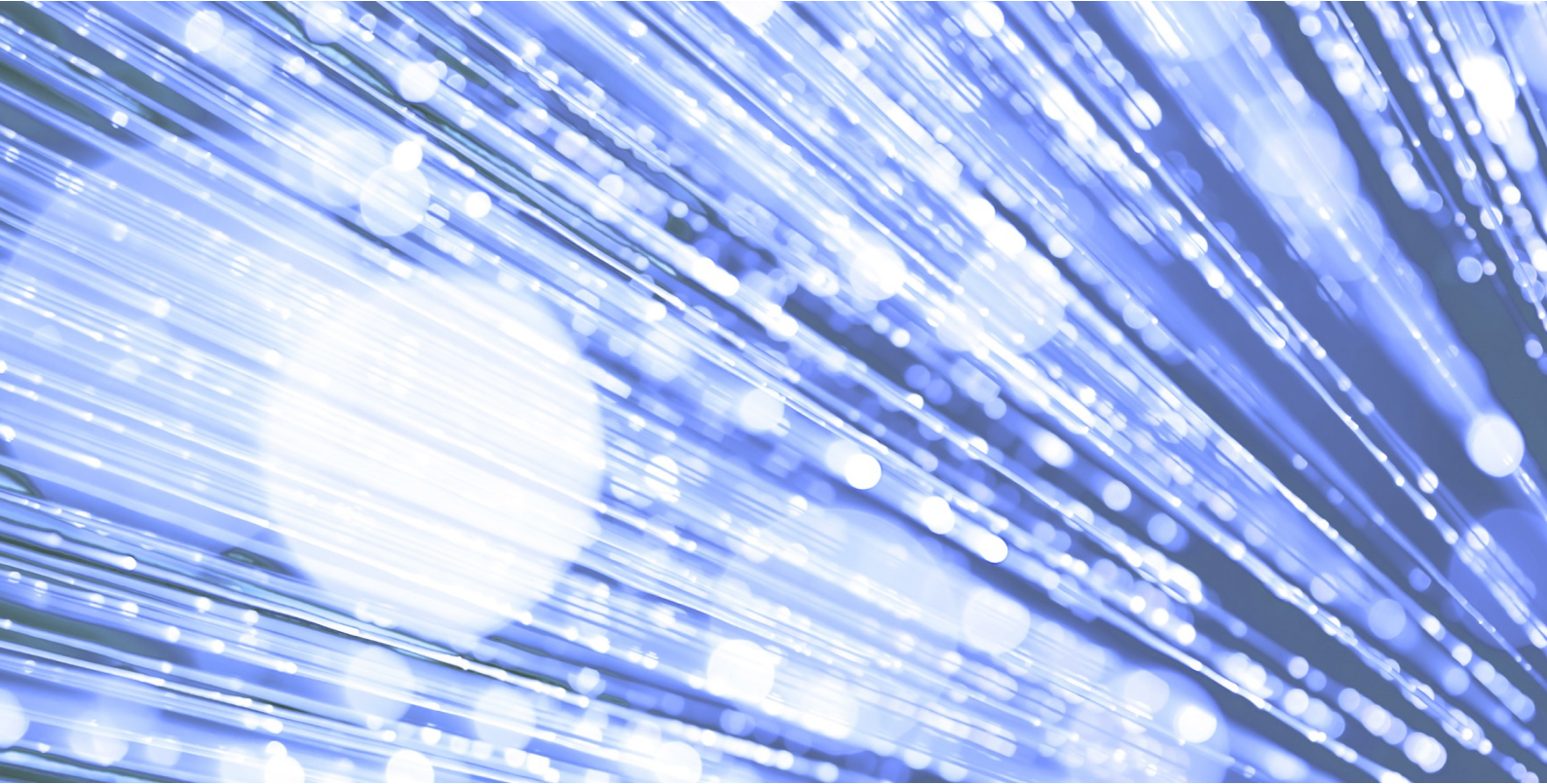


# Mental Health Services Data Set v5.0 Change Specification v1.1

Published 6 August 2021



**Information and technology**  
**for better health and care**

Copyright ©2021 Health and Social Care Information Centre

The Health and Social Care Information Centre is a non-departmental body created by statute, also known as NHS Digital.

# Data Coordination Board

This information standard (DCB0011) has been approved for publication by the Department of Health and Social Care under [section 250 of the Health and Social Care Act 2012](#).

Assurance that this information standard meets the requirements of the Act and is appropriate for the use specified in the specification document has been provided by the Data Standards Assurance Service (DSAS) and approved by the Data Coordination Board (DCB).

This information standard comprises the following documents:

- Requirements Specification
- Implementation Guidance
- Change Specification.

An Information Standards Notice (DCB0011 Amd 29/2020) has been issued as a notification of use and implementation timescales. Please read this alongside the documents for the standard.

The controlled versions of these documents can be found on the [NHS Digital website](#). Any copies held outside of that area, in whatever format (e.g. paper, email attachment), are considered to have passed out of control and should be checked for currency and validity.

Date of publication: 8 April 2021

## Update: 6 August 2021

Following publication on 8 April 2021, the need for corrections to the data set was identified and [a Corrigendum has been issued](#). Note that there is no impact on either the published Requirements Specification or the Implementation Guidance. However, an updated Change Specification (this document) and Data Set Specification have been issued and should be read in conjunction with the Corrigendum.



This information is licensed under the Open Government Licence v3.0. To view this licence, visit <http://www.nationalarchives.gov.uk/doc/open-government-licence/> or write to the Information Policy Team, The National Archives, Kew, Richmond, Surrey, TW9 4DU.

## Glossary of Terms

A full Glossary of Terms for the MHSDS Information Standard can be found within the MHSDS Requirements Specification. ■

# Contents

|   |           |
|---|-----------|
| <b>1. Overview</b>  | <b>4</b>  |
| 1.1. Summary  | 4         |
| 1.2. Supporting documents   | 8         |
| 1.3. Related standards  | 9         |
| <b>2. Change specification</b>  | <b>10</b> |
| 2.1. Reason for release   | 10        |
| 2.2. Justification for changes  | 10        |
| 2.2.1. Deletion of data items that are no longer required within the data set, following comprehensive review with data submitters and data consumers | 10        |
| 2.2.2. Inclusion of further specialised mental health (SMH) commissioning data fields to allow the separate overlapping SMH Data Set to be retired    | 14        |
| 2.2.3. Inclusion of further Transforming Care data requirements to support reporting of Learning Disability and autism care services.                 | 16        |
| 2.2.4. Updating the data set in line with new and evolving models of care, such as community crisis and internet enabled therapy services             | 19        |
| 2.2.5. Improved monitoring of access to specialist community perinatal mental health services by patients and their partners                          | 20        |
| 2.2.6. Clarification to the data set scope to ensure consistent inclusion criteria are applied across services  | 21        |
| 2.2.7. Amendments to support reporting in line with the Independent Review of the Mental Health Act 1983 recommendations                              | 22        |
| 2.2.8. Additional data fields for the uses of restrictive interventions to support reporting for the Mental Health Units (Use of Force) Act 2018      | 24        |
| 2.2.9. Improvements to the Protected Characteristic data items to better reflect the population   | 25        |
| 2.2.10. Various code list and definition updates to better reflect the delivery of care   | 26        |
| 2.2.11. Updates in line with recent and wider NHS Data Model and Dictionary developments  | 56        |
| 2.2.12. Change control  | 80        |
| <b>Endnotes</b>   | <b>80</b> |

# 1. Overview

This product precisely defines the patient level Mental Health Services Data Set (MHSDS) standard. The Summary section below describes the standard; the Requirements and Conformance Criteria sections explain what is required of care providers and systems to conform to the standard, and how conformance is tested.

This document is the formal definition of the standard.

The key words MUST, SHOULD and MAY are defined in [RFC-2119](#).

## 1.1. Summary

| Standard        |   |
|-----------------|---|
| Standard Number | DCB0011   |
| Standard Title  | Mental Health Services Data Set (MHSDS)   |
| Description     | <p>The MHSDS is a patient level, output based, secondary uses data set which aims to deliver robust, comprehensive, nationally consistent and comparable person-based information for children, young people and adults who are in contact with services for mental health and wellbeing, Learning Disability, autism or other neurodevelopmental conditions.</p> <p>It covers services located in England or located outside England but treating patients commissioned by an English CCG or NHS England specialised commissioner or an NHS-led Provider Collaborative.</p> <p>As a secondary uses data set it re-uses clinical and operational data for purposes other than direct patient care, for example: commissioning, service improvement and service design. It defines the data items, definitions and associated value sets extracted or derived from local information systems.</p> <p><b><u>In Scope</u></b></p> <p>All activity relating to patients of any age who receive care for a suspected or diagnosed mental health and wellbeing need, Learning Disability, autism or other neurodevelopmental conditions is within scope of the MHSDS.</p> <p>It may be that the person has:</p> <ul style="list-style-type: none"> <li>• A mental health need or is being supported for their mental wellbeing including; <ul style="list-style-type: none"> <li>○ Gambling addiction and substance misuse</li> <li>○ Children and young people's mental health Services</li> <li>○ Mental health support teams working in schools and colleges</li> </ul> </li> <li>• Any combination of mental health, Learning Disability or autism needs</li> </ul> |

|  |   |
|--|---|
|  | <p><b><u>Out of Scope</u></b></p> <ul style="list-style-type: none"> <li>• Adult Improving Access to Psychological Therapies (IAPT) are currently out of scope of the MHSDS as this activity is covered by the IAPT dataset.</li> </ul>   |
| Dataset submission requirements by location and funding source | <p>Record level data submission requirements for each patient accessing services, based on location and funding source, are as follows;</p> <p><b>Services in England:</b></p> <ul style="list-style-type: none"> <li>• If the patient is wholly funded by the NHS – data submission for that patient is mandatory.</li> <li>• If the patient is partially funded by the NHS – data submission for that patient is mandatory.</li> <li>• If the patient is wholly funded by any means that is not NHS – data submission is optional.</li> </ul> <p><b>Services outside England:</b></p> <ul style="list-style-type: none"> <li>• If the patient is attending a service located outside England, but commissioned by an English CCG, NHS England specialised commissioner or an NHS-led Provider Collaborative, data submission is optional but may be a requirement of the commissioning arrangements.</li> </ul> <p>For example, this would include providers that are near English borders that routinely provide services to English patients and are claiming funding from English commissioners.</p> |
| Examples of activity in scope                                  | <p>The data set scope includes, but is not limited to, the examples below.</p> <p><b>Service users</b></p> <p>Any patients who receive care for a suspected or diagnosed mental health and wellbeing need, Learning Disability or autism.</p> <p><b><u>Family Members, Carers or Partners</u></b></p> <p>Any family member, carer or partner (of the patient described above) who receives family, carer or partner interventions.</p> <p><b><u>Organisation Types</u></b></p> <p>Any service providers that provide assessments or care for people with a suspected or diagnosed mental health and wellbeing need, Learning Disability or autism including;</p> <ul style="list-style-type: none"> <li>• NHS Mental Health Trusts</li> <li>• NHS Acute Trusts<sup>1</sup></li> <li>• NHS Community Health Trusts <b>Error! Bookmark not defined.</b></li> <li>• Independent and voluntary sector healthcare providers and any other qualified providers offering a service model that includes NHS funded and non-NHS funded patients <b>Error! Bookmark not defined.</b></li> </ul>                     |

<sup>1</sup> Where there is direct provision of specialist secondary mental health, Learning Disabilities, or autism services

|                |   |
|----------------|---|
|                | <p><b><u>Service Types</u></b></p> <p>The 'Service or Team Type Referred To' and 'Hospital Bed Type' data items, defined in the MHSDS Technical Output Specification (TOS) attempt to define a national list of in-scope community and inpatient service types respectively for the MHSDS and in doing so provides examples of the services included in the scope. However, these lists may not be comprehensive considering evolving models of care delivery.</p> <p>Services covered by the data set scope but not appearing in these data item lists must identify themselves against the most appropriate code available.</p> <p>The following service types are also included within the scope;</p> <ul style="list-style-type: none"> <li>• NHS commissioned mental health services delivered within or to support primary care (excluding adult IAPT)</li> <li>• <a href="#">New models of community mental health services</a> integrated with primary care</li> </ul> <p><b><u>Departments</u></b></p> <p>The standard must be read and used by all heads of mental health, learning disabilities and autism services, and other clinical and support services, including community services, that have an active involvement in delivering secondary mental health care.</p> <p><b><u>Professionals</u></b></p> <p>The standard applies to all professions working in or supporting mental health, learning disabilities and autism services and other services offering secondary mental health care including community services. The MHSDS Technical Output Specification (TOS) provides an indication of the care professionals that are within the scope of this information standard (see MHS901 Staff Details table).</p> <p><b><u>IT Systems</u></b></p> <p>The standard predominantly, but not exclusively, relates to clinical systems designed to support mental health, learning disabilities and autism services, Patient Administration Systems (PAS) and Electronic Patient Records (EPR).</p> |
| IG and Linkage | <p>The data held in the MHSDS will be made available within NHS Digital for analysis, and also for other arm's-length bodies, NHS-funded mental health service providers and commissioners and the wider mental health community, to support research and innovation and understand the impact of mental health care on patient outcomes and experiences.</p> <p>Requests for data from the MHSDS will be managed through NHS Digital's Clear Data Access Tools and Data Access Request Service.</p>  |

|                |  |
|----------------|--|
|                | <p>Information will be published in line with NHS Digital's duty to publish under section 260(1) of the Health and Social Care Act 2012, unless it falls within section 260(2) of the Act.</p> <p>Mental health data may also be linked to data held by NHS Digital from various other data sets and collections to provide richer information and enhance existing and develop new publications, and to respond to requests for data and information. More information about the data sets and collections that NHS Digital hold and that may be used for linkage can be found on the <a href="#">NHS Digital Data Collections and Data Sets webpage</a>.</p> <p>Mental health data may also be linked to other data sets held by external bodies including Public Health England, NHS England and other researchers.</p>   |
| <b>Release</b> |  |
| Release Number | Amd 29/2020  |
| Release Title  | Version 5.0  |
| Description    | <p>The changes included in this release relate to:</p> <ul style="list-style-type: none"> <li>• Deletion of data items that are no longer required within the data set, following comprehensive review with data submitters and data consumers</li> <li>• Inclusion of further specialised mental health (SMH) commissioning data fields to allow the separate overlapping SMH Data Set to be retired</li> <li>• Inclusion of further Transforming Care data requirements to support reporting of Learning Disability and autism care services. This includes additional fields from the DCBI2007 Assuring Transformation (AT) collection to support a longer-term hybrid MHS:AT model which has minimised duplication of content and is collected from the provider or commissioner appropriately</li> <li>• Updating the data set in line with new and evolving models of care, such as community crisis and internet enabled therapy services</li> <li>• Improved monitoring of access to specialist community perinatal mental health services by patients and their partners</li> <li>• Clarification of the data set scope to ensure consistent inclusion criteria are applied across services</li> <li>• Amendments to support reporting in line with the Independent Review of the Mental Health Act 1983 recommendations</li> <li>• Additional data fields for the uses of restrictive interventions to support reporting for the Mental Health Units (Use of Force) Act 2018</li> <li>• Improvements to the Protected Characteristic data items to better reflect the population, such as inclusion of a placeholder for Ethnic Category 2021 and a move to Gender Identity Code</li> <li>• Various code and definition updates to better reflect the delivery of care, such as to Hospital Bed Types</li> <li>• Updates in line with recent and wider NHS Data Model &amp; Dictionary developments</li> </ul> |

|                                |   |
|--------------------------------|---|
|                                |   |
| Implementation Completion Date | <p><b><u>System Conformance</u></b></p> <p>From 1 October 2021 mental health systems <b>MUST</b> be fully conformant with this standard.</p> <p><b><u>Health and Care Organisations</u></b></p> <p>From 1 October 2021 providers of mental health, learning disabilities and autism services as defined in this Information Standard <b>MUST</b> be able to collect the information as defined in the Technical Output Specification for local use.</p> <p>From 1 November 2021 providers of NHS funded mental health, learning disabilities and autism services <b>MUST</b> begin submitting MHSDS submissions in accordance with this standard.</p> |
| Full Conformance Date          | 20 November 2021  |

## 1.2. Supporting documents

This document should be read in conjunction with the following:

| Ref # | Title  |
|-------|--|
| 1     | MHSDS Requirements Specification             |
| 2     | MHSDS Technical Output Specification         |
| 3     | MHSDS Implementation Guidance                |
| 4     | MHSDS User Guidance                          |
| 5     | NHS Data Model and Dictionary Change Request |
| 6     | MHSDS Data Model                             |
| 7     | MHSDS Data Set Specification                 |

Please see section 2.4 of the *Implementation Guidance* for a full list and descriptions of each related document listed above and where they can be found.

## 1.3. Related standards

| Reference    | Title  |
|--------------|--|
| DCB1069      | Community Services Data Set (CSDS)   |
| DCB1513      | Maternity Services Data Set (MSDS)   |
| DCB2007      | Assuring Transformation  |
| DCB1605      | Accessible Information   |
| ISB0149-02   | NHS Number for Secondary Care  |
| ISB0149-01   | NHS Number for General Practice  |
| SCCI0034     | SNOMED CT  |
| SCCI0021     | International Statistical Classification of Diseases and Health Related Problems (ICD10) 5 <sup>th</sup> Edition |
| ISB0092      | Commissioning Data Sets (CDS)  |
| DCB0090      | Health and Social Care Organisation Reference Data   |
| DCB2094      | Sexual Orientation Monitoring  |
| DCB0092-2062 | Commissioning Data Sets (CDS) Version 6.2.2: Emergency Care Data Set (ECDS)                                      |
| DCB3017      | Overseas Visitor Charging Category (OVCC)  |
| DCB1520      | Improving Access to Psychological Therapies Data Set   |

Further details regarding the above standards can be found on the [DCB Standards and Collections webpage](#)<sup>i</sup>. This webpage also contains a list of all current DCB and Information Standards Board (ISB) standards and collections.

## 2. Change specification

### 2.1. Reason for release

The MHSDS applies to, and is used by, a wide range of stakeholders. The content of the data set is determined from consultation with these stakeholders which include various sections of Department of Health and Social Care (DHSC) policy, NHS England and Improvement, Care Quality Commission (CQC), service providers and commissioners.

Changes are required to the MHSDS v5.0 to ensure that the data set remains 'fit for purpose'. The following amendments are required in response to changes in clinical practice or coding, changes to policy requirements, changes to the NHS Data Model and Dictionary in light of other Information Standards, and requests for amendments by care providers or system suppliers.

A maintenance strategy has been agreed with the Mental Health Data and Information Programme Board for NHS Digital to facilitate annual updates of the data set. This release represents the third annual update in this development cycle. Please see section 6 of the Implementation Guidance for full details of the maintenance strategy.

The remainder of this document details the reasons for the changes (3.2 Justification for changes) detailing each change individually.

### 2.2. Justification for changes

#### 2.2.1. Deletion of data items that are no longer required within the data set, following comprehensive review with data submitters and data consumers

Reduced burden by removing data fields no longer required for national secondary uses. A comprehensive review is to be undertaken with support from NHS England and NHS Improvement and other key stakeholders.

| Group/ Table       | Item Name / Level         | Item Type | Item Amend Type | Previous                | New   | Change Reason(s)  |
|--------------------|---------------------------|-----------|-----------------|-------------------------|---|---|
| MHS201Care Contact | GROUP THERAPY INDICATOR   | Data Item | Deletion        | GROUP THERAPY INDICATOR | CARE CONTACT PATIENT THERAPY MODE           | The new item has been included within IAPT v2.0 and meets both MHSDS and IAPT requirements. If the data sets were to merge, this item would need to be adopted. |
| MHS001MPI          | PERSON STATED GENDER CODE | Data Item | Deletion        | Gender                  | Item to be replaced by gender identity code | Item to be replaced by gender identity code   |
| MHS001 MPI         | ORGANISATION IDENTIFIER   | Data Item | Deletion        |                         |   | Could be retired as the derived value is much more robust and useful.   |

| Group/ Table                  | Item Name / Level   | Item Type  | Item Amend Type | Previous                      | New                               | Change Reason(s)   |
|-------------------------------|---|------------|-----------------|-------------------------------|-----------------------------------|--|
|                               | (RESIDENCE RESPONSIBILITY)                                      |            |                 |                               |                                   |  |
| MHS002 GP                     | ORGANISATION IDENTIFIER (GP PRACTICE RESPONSIBILITY)            | Data Item  | Deletion        |                               |                                   | Could be retired as the derived value is much more robust and useful.  |
| MHS005PatInd                  | CYP SPECIAL EDUCATIONAL NEEDS                                   | Data Item  | Deletion        |                               |                                   | Data Item added but later replaced with EDUCATIONAL ASSESSMENT OUTCOME to bring into alignment with CSDS.                                |
| MHS005PatInd                  | CYP EDUCATIONAL HEALTH AND CARE PLAN                            | Data Item  | Deletion        |                               |                                   | Data Item added but later replaced with EDUCATIONAL ASSESSMENT OUTCOME to bring into alignment with CSDS.                                |
| MHS101Referral                | DISCHARGE LETTER ISSUED DATE (MENTAL HEALTH AND COMMUNITY CARE) | Data Item  | Deletion        |                               |                                   | Not used and DQ not reported on  |
| MHS201 Care Contact           | REPLACEMENT APPOINTMENT DATE OFFERED                            | Data Item  | Deletion        |                               |                                   | Not used and DQ not reported on.   |
| MHS201 Care Contact           | REPLACEMENT APPOINTMENT BOOKED DATE                             | Data Item  | Deletion        |                               |                                   | Not used and DQ not reported on.   |
| MHS505RestrictiveIntervention |   | Data Table | Deletion        | Restrictive Intervention      | Restrictive Intervention Incident | This table has been removed as the way of recording these is changing, it is being replaced with MHS505RestrictiveIntervention Incident. |
| MHS505RestrictiveIntervention |   | Data Item  | Deletion        | RESTRICTIVE INTERVENTION TYPE |                                   |  |
| MHS505RestrictiveIntervention | RESTRICTIVE INTERVENTION RESTRAINT INJURY INDICATOR (PATIENT)   | Data Item  | Deletion        |                               |                                   | Removed from the Restrictive Intervention table and reintroduced in the Restrictive Intervention Incident table                          |

| Group/ Table                            | Item Name / Level   | Item Type | Item Amend Type | Previous | New | Change Reason(s)   |
|---|---|-----------|-----------------|----------|-----|--|
| MHS505RestrictiveIntervention           | RESTRICTIVE INTERVENTION RESTRAINT INJURY INDICATOR (CARE PERSONNEL)          | Data Item | Deletion        |          |     | Removed from the Restrictive Intervention table and reintroduced in the Restrictive Intervention Incident table                          |
| MHS505RestrictiveIntervention           | RESTRICTIVE INTERVENTION RESTRAINT INJURY INDICATOR (OTHER PERSON)            | Data Item | Deletion        |          |     | Removed from the Restrictive Intervention table and reintroduced in the Restrictive Intervention Incident table                          |
| MHS505RestrictiveIntervention           | RESTRICTIVE INTERVENTION POST-INCIDENT REVIEW HELD INDICATOR (PATIENT)        | Data Item | Deletion        |          |     | Removed from the Restrictive Intervention table and reintroduced in the Restrictive Intervention Incident table                          |
| MHS505RestrictiveIntervention           | RESTRICTIVE INTERVENTION POST-INCIDENT REVIEW NOT HELD REASON (PATIENT)       | Data Item | Deletion        |          |     | Removed from the Restrictive Intervention table and reintroduced in the Restrictive Intervention Incident table                          |
| MHS505RestrictiveIntervention           | RESTRICTIVE INTERVENTION POST-INCIDENT REVIEW HELD INDICATOR (CARE PERSONNEL) | Data Item | Deletion        |          |     | Removed from the Restrictive Intervention table and reintroduced in the Restrictive Intervention Incident table                          |
| MHS702 CPA Review                       | CARE PROGRAMME APPROACH REVIEW ABUSE QUESTION ASKED INDICATOR                 | Data Item | Deletion        |          |     | Data is not of sufficient value.   |
| MHS008CarePlanType                      | MENTAL HEALTH DELAYED DISCHARGE REASON  | Data Item | Deletion        |          |     | This data item is already correctly located in table MH504Delayed Discharge and had been added to the MHS008CarePlanType table in error. |
| MHS601MedicalHistory(PreviousDiagnosis) | MENTAL HEALTH LONG TERM CONDITION INDICATOR                                   | Data Item | Deletion        |          |     | Following consultation with NHS England this data item has been removed as it does not meet the requirement as originally specified.     |



## 2.2.2. Inclusion of further specialised mental health (SMH) commissioning data fields to allow the separate overlapping SMH Data Set to be retired

Support the retirement of the SMH collection by ensuring the MHSDS includes the required data items (where appropriate)

| Group/ Table   | Item Name / Level  | Item Type  | Item Amend Type | Previous                                  | New                                   | Change Reason(s)  |
|--|--|------------|-----------------|---|---------------------------------------|---|
| MHS502WardStay   | Ward Code  | Data Item  | Amendment       | O (Optional)                              | R (Required)                          | As Specialised Commissioning is being included in MHSDS the mandate needs to match            |
| MHS013MHCurrency Model   |  | Data Table | Addition        |   |                                       | A new table to record the currency model, to replace clustering in due course                 |
| MHS013MHCurrency Model   | START DATE (MENTAL HEALTH CURRENCY MODEL)                    | Data Item  | Amendment       | START DATE (MENTAL HEALTH CURRENCY MODEL) | CURRENCY GROUP START DATE             | Amendments from NHS England   |
| MHS013MHCurrency Model   | END DATE (MENTAL HEALTH CURRENCY MODEL)                      | Data Item  | Amendment       | END DATE (MENTAL HEALTH CURRENCY MODEL)   | CURRENCY GROUP END DATE               | Amendments from NHS England   |
| MHS013MHCurrency Model   |  |            |                 |   |                                       |   |
| MHS013MHCurrency Model   |  |            | Amendment       | R (Required)                              | P (Pilot)                             | Has been made a pilot table as it is only a pilot group for the time being as it is developed |
| MHS517 Specialised Mental Health Exceptional Package of Care (EPC) |  | Data Table | Addition        |   |                                       | A new table to record EPCs as part of the retiring of the Spec Comms data set                 |
| MHS517 Specialised Mental Health Exceptional Package of Care (EPC) | HOSPITAL PROVIDER SPELL IDENTIFIER                           | Data Item  | Addition        |   | HOSPITAL PROVIDER SPELL IDENTIFIER    | New data item which is a part of the new MHS517 table.  |
| MHS517 Specialised Mental Health Exceptional Package of Care (EPC) | SPECIALISED MENTAL HEALTH EXCEPTIONAL PACKAGE OF CARE CHARGE | Data Item  | Addition        |   | SPECIALISED MENTAL HEALTH EXCEPTIONAL | New data item which is a part of the new MHS517 table.  |

| Group/ Table   | Item Name / Level  | Item Type | Item Amend Type | Previous | New  | Change Reason(s)                                       |
|--|--|-----------|-----------------|----------|--|--|
|  |  |           |                 |          | PACKAGE OF CARE CHARGE   |  |
| MHS517 Specialised Mental Health Exceptional Package of Care (EPC) | ORGANISATION IDENTIFIER (CODE OF COMMISSIONER)                     | Data Item | Addition        |          | ORGANISATION IDENTIFIER (CODE OF COMMISSIONER )                    | New data item which is a part of the new MHS517 table. |
| MHS517 Specialised Mental Health Exceptional Package of Care (EPC) | START DATE (SPECIALISED MENTAL HEALTH EXCEPTIONAL PACKAGE OF CARE) | Data Item | Addition        |          | START DATE (SPECIALISED MENTAL HEALTH EXCEPTIONAL PACKAGE OF CARE) | New data item which is a part of the new MHS517 table. |
| MHS517 Specialised Mental Health Exceptional Package of Care (EPC) | END DATE (SPECIALISED MENTAL HEALTH EXCEPTIONAL PACKAGE OF CARE)   | Data Item | Addition        |          | END DATE (SPECIALISED MENTAL HEALTH EXCEPTIONAL PACKAGE OF CARE)   | New data item which is a part of the new MHS517 table. |

## 2.2.3. Inclusion of further Transforming Care data requirements to support reporting of Learning Disability and autism care services.

Support the retirement of the AT collection by ensuring the MHSDS includes the required data items (where appropriate)

| Group/ Table                    | Item Name / Level   | Item Type    | Item Amend Type | Previous  | New   | Change Reason(s)  |
|---------------------------------|---|--------------|-----------------|---|---|---|
| MHS005Pa<br>tIInd               | EDUCATION<br>AL<br>ASSESSME<br>NT<br>OUTCOME                        | Data<br>Item | Addition        |   | EDUCATIONAL ASSESSMENT<br>OUTCOME   | Added as part of the<br>Assuring Transformation<br>requirement and also to bring<br>into alignment with CSDS.                             |
| MHS008Ca<br>rePlanType          | MENTAL<br>HEALTH<br>DELAYED<br>DISCHARGE<br>REASON                  | Data<br>Item | Addition        |   | MENTAL HEALTH DELAYED<br>DISCHARGE REASON   | Added as part of the<br>Assuring Transformation<br>requirement to avoid<br>duplication and burden   |
| MHS009Ca<br>rePlanAgre<br>ement | FAMILY NOT<br>INVOLVED<br>IN CARE<br>PLAN<br>DISCUSSIO<br>NS REASON | Data<br>Item | Addition        |   | FAMILY NOT INVOLVED IN CARE<br>PLAN DISCUSSIONS REASON  | Added as part of the<br>Assuring Transformation<br>requirement to avoid<br>duplication and burden   |
| MHS501Ho<br>spProvSpel<br>I     | TRANSFOR<br>MING CARE<br>INDICATOR                                  | Data<br>Item | Addition        |   | TRANSFORMING CARE<br>INDICATOR  | The current method picking<br>up a lot of patients believed<br>to be out of scope, so this<br>flag will make the numbers<br>more accurate |
| MHS501Ho<br>spProvSpel<br>I     | TRANSFOR<br>MING CARE<br>INDICATOR                                  | Data<br>Item | Amendment       | TRANSFORMING CARE<br>INDICATOR  | TRANSFORMING CARE TYPE  | Non-binary now so renamed<br>to reflect   |
| MHS501Ho<br>spProvSpel<br>I     | TRANSFOR<br>MING CARE<br>INDICATOR                                  | Data<br>Item | Amendment       | Y - Yes, the patient is in scope<br>of Transforming Care<br>N - No, the patient is not in<br>scope of Transforming Care | 1 - Patient with autism (and no<br>Learning Disability) who is in scope<br>of transforming care<br>2 - Patient with a Learning Disability<br>(and no autism) who is in scope of<br>transforming care<br>3 - Patient with autism and a<br>Learning Disability who is in scope of<br>transforming care<br>4 - No, the patient is not in scope of<br>Transforming Care | The new flag wasn't granular<br>enough, these options<br>capture what is needed   |

| Group/ Table        | Item Name / Level                          | Item Type | Item Amend Type | Previous  | New   | Change Reason(s)   |
|---------------------|--|-----------|-----------------|---|---|--|
| MHS501HospProvSpelI | TRANSFORMING CARE TYPE                     | Data Item | Amendment       | 1 - Patient with autism (and no Learning Disability) who is in scope of transforming care<br>2 - Patient with a Learning Disability (and no autism) who is in scope of transforming care<br>3 - Patient with autism and a Learning Disability who is in scope of transforming care  | 1 - Patient with autism (and no Learning Disability)<br>2 - Patient with a Learning Disability (and no autism)<br>3 - Patient with autism and a Learning Disability   | Descriptions shortened as end wasn't required  |
| MHS501HospProvSpelI | TRANSFORMING CARE TYPE                     | Data Item | Amendment       | Identification of patients in scope of Transforming Care  | Category of patients in scope of Transforming Care  | Description edited for accuracy  |
| MHS501HospProvSpelI | TRANSFORMING CARE INDICATOR                | Data Item | Addition        | TRANSFORMING CARE INDICATOR   |   | TRANSFORMING CARE TYPE was actually 2 data items so it has been split, see row below also  |
| MHS501HospProvSpelI | TRANSFORMING CARE TYPE                     | Data Item | Amendment       | 1 - Patient with autism (and no Learning Disability) who is in scope of transforming care<br>2 - Patient with a Learning Disability (and no autism) who is in scope of transforming care<br>3 - Patient with autism and a Learning Disability who is in scope of transforming care<br>4 - No, the patient is not in scope of Transforming Care            | 1 - Patient with autism (and no Learning Disability) who is in scope of transforming care<br>2 - Patient with a Learning Disability (and no autism) who is in scope of transforming care<br>3 - Patient with autism and a Learning Disability who is in scope of transforming care  | TRANSFORMING CARE TYPE was actually 2 data items so it has been split,   |
| MHS203OtherAttend   | OTHER PERSON IN ATTENDANCE AT CARE CONTACT | Data Item | Amendment       | 01 - Independent Advocate (Family Member)<br>02 - Independent Advocate (Independent Person)<br>03 - Independent Mental Capacity Advocate (IMCA)<br>04 - Independent Mental Health Advocate (IMHA)<br>05 - Non Instructed Advocate<br>10 - Parent or relative (Non-Advocate)<br>11 - Friend or neighbour (Non-Advocate)<br>12 - Care Worker (Non-Advocate) | 01 – Independent Advocate (Family Member)<br>02 - Independent Advocate (Independent Person)<br>03 - Independent Mental Capacity Advocate (IMCA)<br>04 - Independent Mental Health Advocate (IMHA)<br>05 - Non Instructed Advocate<br>10 - Parent or relative (Non-Advocate)<br>11 - Friend or neighbour (Non-Advocate)<br>12 - Care Worker (Non-Advocate) | New codes need for more accurate reporting. The data dictionary is making all national codes make sense in their own right and to allow possible future importing of the code lists all labels must have a valid value. All headings therefore have been removed and to make the description more meaningful the (now) old header is a suffix where appropriate. |

| Group/<br>Table       | Item Name /<br>Level                                    | Item<br>Type | Item Amend<br>Type | Previous  | New                                     | Change Reason(s)  |
|-----------------------|---|--------------|--------------------|---|---|---|
|                       |   |              |                    | 13 - Other adult with parental<br>responsibility<br>14 - Social Worker (Non-<br>Advocate) |   |   |
| MHS203Ot<br>herAttend | OTHER<br>PERSON IN<br>ATTENDAN<br>CE AT CARE<br>CONTACT | Data<br>Item | Addition           |   | REASON PATIENT DOES NOT<br>HAVE AN IMCA | Added as part of the<br>Assuring Transformation<br>requirement to avoid<br>duplication and burden |
| MHS203Ot<br>herAttend | OTHER<br>PERSON IN<br>ATTENDAN<br>CE AT CARE<br>CONTACT | Data<br>Item | Addition           |   | REASON PATIENT DOES NOT<br>HAVE AN IMHA | Added as part of the<br>Assuring Transformation<br>requirement to avoid<br>duplication and burden |

## 2.2.4. Updating the data set in line with new and evolving models of care, such as community crisis and internet enabled therapy services

Ensure the data set more accurately reflects service provision, such as with community crisis and internet enabled therapy services, by providing the relevant codes to record against

| Group/ Table                | Item Name / Level  | Item Type  | Item Amend Type | Previous                     | New  | Change Reason(s)  |
|-----------------------------|--|------------|-----------------|------------------------------|--|---|
| MHS201CareContact           | PLANNED CARE CONTACT INDICATOR                                     | Data Item  | Addition        |                              |  | Indicates whether the Care Contact was a planned appointment or an unscheduled contact (e.g. in crisis).<br>At the moment, the Attended or Did Not Attend code is being used but this is not appropriate. |
| MHS302MHDropInContact       | MENTAL HEALTH DROP IN CONTACT                                      | Data Table | Addition        |                              |  | A new table to record drop in crisis activity. We have created a new MHS302 Drop In Contact table to capture types of crisis guidance.  |
| MHS302MHDropInContact       | MENTAL HEALTH DROP IN CONTACT OUTCOME                              | Data Item  | Addition        |                              | MENTAL HEALTH DROP IN CONTACT OUTCOME        | Ability to record the outcome of a drop in contact  |
| MHS101Referral              | SOURCE OF REFERRAL FOR MENTAL HEALTH SERVICES DATA SET             | Data Item  | Amendment       |                              | Q1 - Drop in Contact                         | Patients can be referred in from the new drop in contact table, this option is therefore needed to record that.   |
| MHS301GroupSession          | SERVICE OR TEAM TYPE REFERRED TO (MENTAL HEALTH)                   | Data Item  | Amendment       | A17 - Memory Services/Clinic | A17 - Memory Services/Clinic/Drop in service | New Drop in contact option added  |
| MHS102ServiceTypeReferredTo | SERVICE OR TEAM TYPE REFERRED TO (MENTAL HEALTH)                   | Data Item  | Amendment       | A17 - Memory Services/Clinic | A17 - Memory Services/Clinic/Drop in service | New Drop in contact option added  |
| MHS006MHCareCoord           | CARE PROFESSIONAL SERVICE OR TEAM TYPE ASSOCIATION (MENTAL HEALTH) | Data Item  | Amendment       | A17 - Memory Services/Clinic | A17 - Memory Services/Clinic/Drop in service | New Drop in contact option added  |

## 2.2.5. Improved monitoring of access to specialist community perinatal mental health services by patients and their partners

| Group/ Table              | Item Name / Level   | Item Type | Item Amend Type | Previous | New   | Change Reason(s)  |
|---------------------------|---|-----------|-----------------|----------|---|---|
| MHS101Referral            | OFFER STATUS (COMMUNITY PERINATAL MENTAL HEALTH PARTNER ASSESSMENT) | Data Item | Addition        |          | OFFER STATUS (COMMUNITY PERINATAL MENTAL HEALTH PARTNER ASSESSMENT)       | We need to know whether community PMH services are offering husband/partner/wife of women in contact with specialist perinatal mental health services evidence-based assessments for their mental health and signposting to MH support/relevant services as required. |
| MHS101Referral            | PRIMARY REASON FOR REFERRAL (MENTAL HEALTH)                         | Data Item | Amendment       |          | Addition of:<br>29 - Community Perinatal Mental Health Partner Assessment | We need to know whether community PMH services are offering husband/partner/wife of women in contact with specialist perinatal mental health services evidence-based assessments for their mental health and signposting to MH support/relevant services as required. |
| MHS103OtherReasonReferral | OTHER REASON FOR REFERRAL (MENTAL HEALTH)                           | Data Item | Amendment       |          | Addition of:<br>29 - Community Perinatal Mental Health Partner Assessment | We need to know whether community PMH services are offering husband/partner/wife of women in contact with specialist perinatal mental health services evidence-based assessments for their mental health and signposting to MH support/relevant services as required. |
| MHS201CareContact         | OFFER STATUS (COMMUNITY PERINATAL MENTAL HEALTH PARTNER ASSESSMENT) | Data Item | Amendment       |          | OFFER STATUS (COMMUNITY PERINATAL MENTAL HEALTH PARTNER ASSESSMENT)       | Item moved from the referral table to the contact table   |

## 2.2.6. Clarification to the data set scope to ensure consistent inclusion criteria are applied across services

Clarify the scope to ensure service activity is submitted consistently across organisations.

| Group/<br>Table | Item<br>Name /<br>Level | Item<br>Type | Item<br>Amend<br>Type | Previous  | New   | Change Reason(s)  |
|-----------------|-------------------------|--------------|-----------------------|---|---|---|
|                 |                         |              |                       | <p>The MHSDS is a patient level, output based, secondary uses data set which seeks to deliver robust, comprehensive, nationally consistent and comparable person-based information for children, young people and adults who are in contact with Mental Health, Learning Disabilities or Autism Spectrum Disorder Services.</p> <p>As a secondary uses data set it re-uses clinical and operational data for purposes other than direct patient care. It defines the data items, definitions and associated value sets extracted or derived from local information systems.</p> | <p>The MHSDS is a patient level, output based, secondary uses data set which aims to deliver robust, comprehensive, nationally consistent and comparable person-based information for children, young people and adults who are in contact with services for mental health and wellbeing, Learning Disability, autism or other neurodevelopmental conditions.</p> <p>It covers services located in England or located outside England but treating patients commissioned by an English CCG or NHS England specialised commissioner or an NHS-led Provider Collaborative.</p> <p>As a secondary uses data set it re-uses clinical and operational data for purposes other than direct patient care, for example: commissioning, service improvement and service design. It defines the data items, definitions and associated value sets extracted or derived from local information systems</p> | <p>To clarify the scope of the data set to ensure that potential new submitters are clear whether they are in scope or not and to ensure service activity is included consistently across organisations.</p> <p>To consider options for strengthening the submission requirement for non-English providers providing care for patients registered with a GP in England. E.g. a patient placed over the border in a Welsh or Scottish hospital</p> |
|                 |                         |              |                       |   | <p>Various amendments to wording within the scope have been applied following extensive review with NHS England and Improvement colleagues. The amended scope in full, can be found within a number of documents including the Requirements Specification.</p>  | <p>In line with further clarification required from NHS England</p>   |

## 2.2.7. Amendments to support reporting in line with the Independent Review of the Mental Health Act 1983 recommendations

Allowing new areas of national reporting to be undertaken, such as adding items to support reporting for the Mental Health Units (Use of Force bill).

| Group/ Table                | Item Name / Level  | Item Type | Item Amend Type | Previous   | New  | Change Reason(s)   |
|-----------------------------|--|-----------|-----------------|--|--|--|
|                             |  |           |                 | Autism Spectrum Disorder   | Autism   | The independent review of the Mental Health Act has made a range of recommendations including those about how data on the act should be recorded in MHSDS, and those in relation to people with autism, Learning Disability or both. |
| MHS101Referral              | PRIMARY REASON FOR REFERRAL (MENTAL HEALTH)                        | Data Item | Amendment       | 24 - Neurodevelopmental Conditions, excluding Autism Spectrum Disorder<br>25 - Suspected Autism Spectrum Disorder<br>26 - Diagnosed Autism Spectrum Disorder | 24 - Neurodevelopmental Conditions, excluding Autism<br>25 - Suspected Autism<br>26 - Diagnosed Autism | Autism Spectrum Disorder is an outdated term and has been replaced with Autism   |
| MHS103OtherReasonReferral   | OTHER REASON FOR REFERRAL (MENTAL HEALTH)                          | Data Item | Amendment       | 24 - Neurodevelopmental Conditions, excluding Autism Spectrum Disorder<br>25 - Suspected Autism Spectrum Disorder<br>26 - Diagnosed Autism Spectrum Disorder | 24 - Neurodevelopmental Conditions, excluding Autism<br>25 - Suspected Autism<br>26 - Diagnosed Autism | Autism Spectrum Disorder is an outdated term and has been replaced with Autism   |
| MHS301GroupSession          | SERVICE OR TEAM TYPE REFERRED TO (MENTAL HEALTH)                   | Data Item | Amendment       | C01 - Autistic Spectrum Disorder Service   | C01 - Autism Service   | Autism Spectrum Disorder has been replaced throughout the data set with just Autism  |
| MHS102ServiceTypeReferredTo | SERVICE OR TEAM TYPE REFERRED TO (MENTAL HEALTH)                   | Data Item | Amendment       | C01 - Autistic Spectrum Disorder Service   | C01 - Autism Service   | Autism Spectrum Disorder has been replaced throughout the data set with just Autism  |
| MHS006MHCareCoordinated     | CARE PROFESSIONAL SERVICE OR TEAM TYPE ASSOCIATION (MENTAL HEALTH) | Data Item | Amendment       | C01 - Autistic Spectrum Disorder Service   | C01 - Autism Service   | Autism Spectrum Disorder has been replaced throughout the data set with just Autism  |

| Group/<br>Table       | Item Name / Level  | Item Type | Item Amend<br>Type | Previous  | New  | Change Reason(s)  |
|-----------------------|--|-----------|--------------------|---|--|---|
| MHS006M<br>HCareCoord | Hospital Bed Type<br>(Mental Health)                                     | Data Item | Amendment          | 30 - Child and Young<br>Person Learning<br>Disabilities / Autistic<br>Spectrum Disorder<br>admitted patient | 30 - Child and Young<br>Person Learning<br>Disabilities / Autism<br>admitted patient | Autism Spectrum Disorder has<br>been replaced throughout the<br>data set with just Autism |
| MHS803Ca<br>reCluster | CHILD AND<br>ADOLESCENT<br>MENTAL HEALTH<br>NEEDS BASED<br>GROUPING CODE | Data Item | Amendment          | 13 - Getting Help: Autism<br>Spectrum (AUT)   | 13 - Getting Help: Autism<br>(AUT)   | Autism Spectrum Disorder has<br>been replaced throughout the<br>data set with just Autism |

## 2.2.8. Additional data fields for the uses of restrictive interventions to support reporting for the Mental Health Units (Use of Force) Act 2018

| Group/ Table                     | Item Name / Level               | Item Type | Item Amend Type | Previous   | New  | Change Reason(s)   |
|----------------------------------|---------------------------------|-----------|-----------------|--|--|--|
| MHS505RestrictiveInterventionInc | RESTRICTIVE INTERVENTION REASON | Data Item | Addition        |  | Addition of the reason for the use of restrictive interventions  | Restrictive interventions are a key focus of the Mental Health Units (Use of Force) Bill 2017–19 currently going through Parliament, which will set out new requirements for mental health services. The requested changes are intend to support development of the bill and to facilitate reporting of incidents at both a local and national level. Reporting in line with the Law - Use of Force act monitoring of the use of restrictive practices |
| MHS505RestrictiveInterventionInc | RESTRICTIVE INTERVENTION REASON | Data Item | Amendment       | 10 - Prevent a patient being violent to others<br>11 - Prevent a patient causing serious harm to themselves or being at risk of serious physical injury by accident<br>12 - Lawfully administer medicines or other medical treatment<br>13 - Facilitate personal care<br>14 - Facilitate nasogastric feeding<br>15 - Prevent the patient exhibiting extreme and prolonged over-activity<br>16 - Prevent the patient exhibiting otherwise dangerous behaviour;<br>17 - Undertake a search of the patient's clothing or property to ensure the safety of others<br>18 - Prevent the patient absconding from lawful custody<br>98 - Other (not listed)<br>99 - Not Known (Not Recorded) | 10 - Prevent a patient being violent to others<br>11 - Prevent a patient causing serious harm to themselves<br>12 - Prevent a patient causing serious physical injury to themselves by accident<br>13 - Lawfully administer medicines or other medical treatment<br>14 - Facilitate personal care<br>15 - Facilitate nasogastric feeding<br>16 - Prevent the patient exhibiting extreme and prolonged over-activity<br>17 - Prevent the patient exhibiting otherwise dangerous behaviour;<br>18 - Undertake a search of the patient's clothing or property to ensure the safety of others<br>19 - Prevent the patient absconding from lawful custody<br>98 - Other (not listed)<br>99 - Not Known (Not Recorded) | Code list altered for more accuracy  |

## 2.2.9. Improvements to the Protected Characteristic data items to better reflect the population

| Group/ Table        | Item Name / Level                       | Item Type | Item Amend Type | Previous   | New  | Change Reason(s)  |
|---------------------|---|-----------|-----------------|--|--|---|
| MHS001MPI           | PERSON STATED GENDER CODE               | Data Item | Deletion        | Gender   |  | Item to be replaced by gender identity code   |
| MHS001MPI           | GENDER IDENTITY CODE (MENTAL HEALTH)    | Data Item | Addition        |  | GENDER IDENTITY CODE (MENTAL HEALTH)                             | New item to replace person stated gender code, to better reflect the population   |
| MHS001MPI           | GENDER IDENTITY SAME AT BIRTH INDICATOR | Data Item | Addition        |  | GENDER IDENTITY SAME AT BIRTH INDICATOR                          | To align with the new Gender data item and the HIV data set this new data item had been added to clarify (and help derive) trans without labelling specifically   |
| MHS001MPI           | GENDER IDENTITY SAME AT BIRTH INDICATOR | Data Item | Amendment       | X - Not Stated (person asked but declined to provide a response) | Z - Not Stated (person asked but declined to provide a response) | Incorrect code added, amended to reflect the data dictionary  |
| MHS001MPI           | ETHNIC CATEGORY 2021                    | Data Item | Addition        |  |  | Pilot / Placeholder data item for when the 2021 census goes live, the old data item will be shut off and this one will take over  |
| MHS302DropInContact | ETHNIC CATEGORY                         | Data Item | Addition        |  | ETHNIC CATEGORY  | Added to better identify the patient  |
| MHS302DropInContact | ETHNIC CATEGORY 2021                    | Data Item | Addition        |  | ETHNIC CATEGORY 2021   | Added to better identify the patient, when the census changes this will replace ethnic category   |
| MHS001MPI           | PERSON STATED GENDER CODE               | Data Item | Addition        |  | PERSON STATED GENDER CODE  | The PERSON STATED GENDER CODE, has been reintroduced back into MHS001MPI Table, because this data item and its associated code list, ensures that mapping and matching against the NHS SPINE values can continue. |

## 2.2.10. Various code list and definition updates to better reflect the delivery of care

Addressing known issues or enhancing existing items to ensure local data can be submitted accurately

| Group/ Table                | Item Name / Level   | Item Type | Item Amend Type | Previous  | New   | Change Reason(s)  |
|-----------------------------|---|-----------|-----------------|---|---|---|
| MHS501HospitalProviderSpell | METHOD OF DISCHARGE (MENTAL HEALTH HOSPITAL PROVIDER SPELL) | Data Item | Amendment       | 1 - Patient discharged on clinical advice or with clinical consent<br>2 - PATIENT discharged him/herself or was discharged by a relative or advocate<br>3 - Patient discharged by mental health review tribunal, Home Secretary or court<br>4 - Patient died<br>6 - Patient discharged him/herself<br>7 - Patient discharged by a relative or advocate<br>8 - Not applicable - Hospital Provider Spell not finished at episode end (i.e. not discharged) or current episode unfinished<br>9 - Not known | 1 - Patient discharged on clinical advice or with clinical consent<br>3 - Patient discharged by mental health review tribunal, Home Secretary or court<br>4 - Patient died<br>6 - Patient discharged him/herself<br>7 - Patient discharged by a relative or advocate<br>8 - Not applicable - Hospital Provider Spell not finished at episode end (i.e. not discharged) or current episode unfinished<br>9 - Not known | Code 2 removed as it is now split into codes 6 and 7                                      |
| MHS001MPI                   | PERSON MARITAL STATUS                                       | Data Item | Amendment       | 8 - Not applicable, i.e. not a psychiatric episode  | 8 - Not applicable  | Data dictionary have updated the description  |
| MHS003AccommodationStatus   | ACCOMMODATION STATUS CODE                                   | Data Item | Amendment       | ACCOMMODATION STATUS CODE   | ACCOMMODATION TYPE  | Data item renamed as it clashed with other data sets                                      |
| MHS007DisabilityType        | DISABILITY CODE   | Data Item | Amendment       | 12 - Autism   | 10 - Speech   | Autism was removed as it is unfit for purpose, 10 - Speech was left out so has been added |

| Group/ Table              | Item Name / Level                  | Item Type | Item Amend Type | Previous   | New   | Change Reason(s)  |
|---------------------------|------------------------------------|-----------|-----------------|--|---|---|
| MHS003AccommodationStatus | ACCOMMODATION STATUS START DATE    | Data Item | Amendment       | ACCOMMODATION STATUS START DATE  | ACCOMMODATION TYPE START DATE   | To be in line with the new accommodation type data item, status has been replaced with type   |
| MHS003AccommodationStatus | ACCOMMODATION STATUS END DATE      | Data Item | Amendment       | ACCOMMODATION STATUS END DATE  | ACCOMMODATION TYPE END DATE   | To be in line with the new accommodation type data item, status has been replaced with type   |
| MHS003AccommodationStatus | ACCOMMODATION STATUS RECORDED DATE | Data Item | Amendment       | ACCOMMODATION STATUS RECORDED DATE   | ACCOMMODATION TYPE RECORDED DATE  | To be in line with the new accommodation type data item, status has been replaced with type   |
| MHS004EmpStatus           | EMPLOYMENT STATUS                  |           |                 | The current EMPLOYMENT status of a PERSON.   | The current PRIMARY EMPLOYMENT status of a PERSON.  | As a patient could be a student and have a part time job etc at the same, the description has been clarified to record the primary employment status. |
| MHS004EmpStatus           | EMPLOYMENT STATUS START DATE       | Data Item | Addition        |  | EMPLOYMENT STATUS START DATE  | New requirement to record the time period an employment period lasted   |
| MHS004EmpStatus           | EMPLOYMENT STATUS END DATE         | Data Item | Addition        |  | EMPLOYMENT STATUS END DATE  | New requirement to record the time period an employment period lasted   |
| MHS003AccommodationStatus | ACCOMMODATION TYPE                 | Data Item | Amendment       | MA00 - Mainstream Housing<br>MA01 - Owner occupier<br>MA02 - Settled mainstream housing with family/friends<br>MA03 - Shared ownership scheme e.g. Social Homebuy Scheme | 01 - Owner occupier<br>02 - Tenant - Local Authority/Arms Length Management Organisation/Registered Landlord<br>03 - Tenant - private landlord<br>04 - Settled mainstream housing with family | New and renamed codes for more accuracy and clarity in reporting  |

| Group/<br>Table | Item Name / Level | Item Type | Item Amend<br>Type | Previous  | New  | Change Reason(s) |
|-----------------|-------------------|-----------|--------------------|---|--|------------------|
|                 |                   |           |                    | <p>(tenant purchase percentage of home value from landlord)</p> <p>MA04 - Tenant - Local Authority/Arms Length Management Organisation/Registered Landlord</p> <p>MA05 - Tenant - Housing Association</p> <p>MA06 - Tenant - private landlord</p> <p>MA09 - Other mainstream housing</p> <p>HM00 - Homeless</p> <p>HM01 - Rough sleeper</p> <p>HM02 - Squatting</p> <p>HM03 - Night shelter/emergency hostel/Direct access hostel (temporary accommodation accepting self referrals, no waiting list and relatively frequent vacancies)</p> <p>HM04 - Sofa surfing (sleeps on different friends floor each night)</p> <p>HM05 - Placed in temporary accommodation by Local Authority (including Homelessness resettlement service) e.g. Bed and Breakfast accommodation</p> <p>HM06 - Staying with friends/family as a short term guest</p> <p>HM07 - Other homeless</p> <p>MH00 - Accommodation with mental health care support</p> <p>MH01 - Supported accommodation (accommodation supported by staff or resident caretaker)</p> <p>MH02 - Supported lodgings (lodgings supported by staff or resident caretaker)</p> <p>MH03 - Supported group home (supported by staff or resident caretaker)</p> <p>MH04 - Mental Health Registered Care Home</p> | <p>05 - Settled mainstream housing with friends</p> <p>06 - University or college accommodation</p> <p>07 - Accommodation tied to job (including Armed Forces)</p> <p>08 - Mobile accommodation</p> <p>09 - Care home with nursing</p> <p>10 - Care home without nursing</p> <p>11 - Specialist housing i.e., suitable &amp; support available to meet specific needs</p> <p>12 - Rough sleeper</p> <p>13 - Squatting</p> <p>14 - Sofa surfing (sleeps on different friends floor each night)</p> <p>15 - Staying with friends/family as a short term guest</p> <p>16 - Bed and breakfast accommodation to prevent or relieve homelessness</p> <p>17 - Sleeping in a night shelter</p> <p>18 - Hostel to prevent or relieve homelessness</p> <p>19 - Temporary housing to prevent or relieve homelessness</p> <p>20 - Admitted patient settings</p> <p>21 - Criminal justice settings</p> <p>22 - Other (Not elsewhere classified)</p> |                  |

| Group/<br>Table | Item Name / Level | Item Type | Item Amend<br>Type | Previous   | New | Change Reason(s) |
|-----------------|-------------------|-----------|--------------------|--|-----|------------------|
|                 |                   |           |                    | MH09 - Other accommodation with mental health care and support<br>HS00 - Acute/long stay healthcare residential facility/hospital<br>HS01 - NHS acute psychiatric ward<br>HS02 - Independent hospital/clinic<br>HS03 - Specialist rehabilitation/recovery<br>HS04 - Secure psychiatric unit<br>HS05 - Other NHS facilities/hospital<br>HS09 - Other acute/long stay healthcare residential facility/hospital<br>CH00 - Accommodation with other (not specialist mental health) care support<br>CH01 - Foyer - accommodation for young people aged 16-25 who are homeless or in housing need<br>CH02 - Refuge<br>CH03 - Non-Mental Health Registered Care Home<br>CH09 - Other accommodation with care and support (not specialist mental health)<br>CJ00 - Accommodation with criminal justice support<br>CJ01 - Bail/Probation hostel<br>CJ02 - Prison<br>CJ03 - Young Offender Institution<br>CJ05 - Young Offender Institution (15-17)<br>CJ06 - Young Offender Institution (18-21)<br>CJ04 - Detention Centre<br>CJ07 - Secure Children's Home (Secure Welfare Accommodation only)<br>CJ08 - Secure Children's Home (Youth Detention Accommodation only) |     |                  |

| Group/<br>Table             | Item Name / Level   | Item Type | Item Amend<br>Type | Previous   | New   | Change Reason(s)                                   |
|-----------------------------|---|-----------|--------------------|--|---|--|
|                             |   |           |                    | CJ10 - Secure Children's Home<br>(Secure Welfare Accommodation<br>and Youth Detention<br>Accommodation)<br>CJ11 - Secure Training Centre<br>CJ12 - Other accommodation with<br>criminal justice support<br>SH00 - Sheltered Housing<br>(accommodation with a scheme<br>manager or warden living on the<br>premises or nearby, contactable by<br>an alarm system if necessary)<br>SH01 - Sheltered housing for older<br>persons<br>SH02 - Extra care sheltered<br>housing (also known as 'very<br>sheltered housing'. For people who<br>are less able to manage on their<br>own, but who do need an extra<br>level of care. Services offered vary<br>between schemes, but meals and<br>some personal care are often<br>provided.)<br>SH03 - Nursing Home for older<br>persons<br>SH09 - Other sheltered housing<br>ML00 - Mobile accommodation<br>OC96 - Not elsewhere classified<br>OC97 - Not specified<br>OC98 - Not applicable<br>OC99 - Not Known (Not Recorded) |   |  |
| MHS501Ho<br>spProvSpel<br>I | PLANNED<br>DESTINATION OF<br>DISCHARGE<br>(HOSPITAL<br>PROVIDER<br>SPELL) | Data Item | Amendment          |  | 39 - Prison<br>40 - Police Station/Police Custody Suite | New codes needed<br>for more accurate<br>reporting |
| MHS501Ho<br>spProvSpel<br>I | DESTINATION OF<br>DISCHARGE<br>(HOSPITAL                                  | Data Item | Amendment          |  | 39 - Prison<br>40 - Police Station/Police Custody Suite | New codes needed<br>for more accurate<br>reporting |

| Group/<br>Table             | Item Name / Level  | Item Type | Item Amend<br>Type | Previous   | New  | Change Reason(s)   |
|-----------------------------|--|-----------|--------------------|--|--|--|
|                             | PROVIDER<br>SPELL)   |           |                    |  |  |  |
| MHS501Ho<br>spProvSpel<br>l | DESTINATION OF<br>DISCHARGE<br>(HOSPITAL<br>PROVIDER<br>SPELL) | Data Item | Amendment          | <p>19 - Usual place of residence unless listed below, for example, a private dwelling whether owner occupied or owned by local authority, housing association or other landlord. This includes wardened accommodation but not residential accommodation where health care is provided. It also includes PATIENTS with no fixed abode.</p> <p>29 - Temporary place of residence when usually resident elsewhere (includes hotel, residential educational establishment)</p> <p>30 - Repatriation from high security psychiatric accommodation in an NHS Hospital Provider (NHS Trust)</p> <p>37 - Court</p> <p>38 - Penal establishment or police station</p> <p>39 - Prison</p> <p>40 - Police Station/Police Custody Suite</p> <p>48 - High Security Psychiatric Hospital, Scotland</p> <p>49 - NHS other hospital provider - high security psychiatric accommodation</p> <p>50 - NHS other hospital provider - medium secure unit</p> <p>51 - NHS other hospital provider - ward for general PATIENTS or the younger physically disabled</p> <p>52 - NHS other hospital provider - ward for maternity PATIENTS or neonates</p> <p>53 - NHS other hospital provider - ward for PATIENTS who are</p> | <p>19 - Usual place of residence unless listed below, for example, a private dwelling whether owner occupied or owned by local authority, housing association or other landlord. This includes wardened accommodation but not residential accommodation where health care is provided. It also includes PATIENTS with no fixed abode.</p> <p>29 - Temporary place of residence when usually resident elsewhere (includes hotel, residential educational establishment)</p> <p>30 - Repatriation from high security psychiatric accommodation in an NHS Hospital Provider (NHS Trust)</p> <p>37 - Court</p> <p>39 - Prison</p> <p>40 - Police Station/Police Custody Suite</p> <p>48 - High Security Psychiatric Hospital, Scotland</p> <p>49 - NHS other hospital provider - high security psychiatric accommodation</p> <p>50 - NHS other hospital provider - medium secure unit</p> <p>51 - NHS other hospital provider - ward for general PATIENTS or the younger physically disabled</p> <p>52 - NHS other hospital provider - ward for maternity PATIENTS or neonates</p> <p>53 - NHS other hospital provider - ward for PATIENTS who are mentally ill or have learning disabilities</p> <p>54 - NHS run Care Home</p> <p>65 - Local Authority residential accommodation i.e. where care is provided</p> <p>66 - Local Authority foster care</p> <p>79 - Not applicable - PATIENT died or still birth</p> <p>84 - Non-NHS run hospital - medium secure unit</p> | New codes need for more accurate reporting following some removal of "new" codes as it caused confusion following feedback from consultation |

| Group/<br>Table | Item Name / Level | Item Type | Item Amend<br>Type | Previous  | New   | Change Reason(s) |
|-----------------|-------------------|-----------|--------------------|---|---|------------------|
|                 |                   |           |                    | <p>mentally ill or have learning disabilities</p> <p>54 - NHS run Care Home</p> <p>55 - NHS run Care Home With Nursing</p> <p>56 - NHS run Care Home Without Nursing</p> <p>65 - Local Authority residential accommodation i.e. where care is provided</p> <p>67 - Local Authority residential accommodation - Care Home With Nursing</p> <p>68 - Local Authority residential accommodation - 24 hour on site staffed tenancy</p> <p>69 - Local Authority residential accommodation - less than 24 hour on site staffed tenancy</p> <p>70 - Local Authority residential accommodation - Care Home Without Nursing</p> <p>66 - Local Authority foster care</p> <p>79 - Not applicable - PATIENT died or still birth</p> <p>84 - Non-NHS run hospital - medium secure unit</p> <p>85 - Non-NHS (other than Local Authority) run Care Home</p> <p>86 - Non-NHS (other than Local Authority) run Care Home with Nursing</p> <p>89 - Non-NHS (other than Local Authority) run Care Home Without Nursing</p> <p>87 - Non-NHS run hospital</p> <p>90 - Non-NHS run hospital - Care Home With Nursing</p> <p>91 - Non-NHS run hospital - Care Home Without Nursing</p> <p>92 - Non-NHS run hospital - 24 hour on site staffed tenancy</p> | <p>85 - Non-NHS (other than Local Authority) run Care Home</p> <p>87 - Non-NHS run hospital</p> <p>88 - Non-NHS (other than Local Authority) run Hospice</p> <p>94 - Forced Repatriation</p> <p>98 - Not applicable</p> <p>99 - Not known</p> |                  |

| Group/<br>Table     | Item Name / Level  | Item Type | Item Amend<br>Type | Previous  | New  | Change Reason(s)                             |
|---------------------|--|-----------|--------------------|---|--|--|
|                     |  |           |                    | 93 - Non-NHS run hospital - less than 24 hour on site staffed tenancy<br>94 - Forced Repatriation<br>88 - Non-NHS (other than Local Authority) run Hospice<br>98 - Not applicable<br>99 - Not known   |  |  |
| MHS501HospProvSpell | PLANNED DESTINATION OF DISCHARGE (HOSPITAL PROVIDER SPELL) | Data Item | Amendment          | 19 - Usual place of residence unless listed below, for example, a private dwelling whether owner occupied or owned by local authority, housing association or other landlord. This includes wardened accommodation but not residential accommodation where health care is provided. It also includes PATIENTS with no fixed abode.<br>29 - Temporary place of residence when usually resident elsewhere (includes hotel, residential educational establishment)<br>30 - Repatriation from high security psychiatric accommodation in an NHS Hospital Provider (NHS Trust)<br>37 - Court<br>39 - Prison<br>40 - Police Station/Police Custody Suite<br>48 - High Security Psychiatric Hospital, Scotland<br>49 - NHS other hospital provider - high security psychiatric accommodation<br>50 - NHS other hospital provider - medium secure unit<br>51 - NHS other hospital provider - ward for general PATIENTS or the younger physically disabled<br>52 - NHS other hospital provider - ward for maternity PATIENTS or neonates | 19 - Usual place of residence unless listed below, for example, a private dwelling whether owner occupied or owned by Local Authority, housing association or other landlord. This includes wardened accommodation but not residential accommodation where health care is provided. It also includes PATIENTS with no fixed abode.<br>29 - Temporary place of residence when usually resident elsewhere (includes hotel, residential Educational Establishment)<br>30 - Repatriation from high security psychiatric accommodation in an NHS Hospital Provider (NHS Trust or NHS Foundation Trust)<br>37 - Court<br>40 - Penal establishment<br>42 - Police Station / Police Custody Suite<br>48 - High Security Psychiatric Hospital, Scotland<br>49 - NHS other Hospital Provider - high security psychiatric accommodation<br>50 - NHS other Hospital Provider - medium secure unit<br>51 - NHS other Hospital Provider - WARD for general PATIENTS or the younger physically disabled<br>52 - NHS other Hospital Provider - WARD for maternity PATIENTS or Neonates<br>53 - NHS other Hospital Provider - WARD for PATIENTS who are mentally ill or have Learning Disabilities<br>55 - Care Home With Nursing<br>56 - Care Home Without Nursing | New codes needed for more accurate reporting |

| Group/<br>Table | Item Name / Level                                  | Item Type | Item Amend<br>Type | Previous   | New  | Change Reason(s)                           |
|-----------------|--|-----------|--------------------|--|--|--|
|                 |  |           |                    | 53 - NHS other hospital provider - ward for PATIENTS who are mentally ill or have learning disabilities<br>54 - NHS run Care Home<br>65 - Local Authority residential accommodation i.e. where care is provided<br>66 - Local Authority foster care<br>79 - Not applicable - PATIENT died or still birth<br>84 - Non-NHS run hospital - medium secure unit<br>85 - Non-NHS (other than Local Authority) run Care Home<br>87 - Non-NHS run hospital<br>88 - Non-NHS (other than Local Authority) run Hospice<br>94 - Forced Repatriation<br>98 - Not applicable<br>99 - Not known | 66 - Local Authority foster care<br>79 - PATIENT died or stillbirth<br>84 - Independent Sector Healthcare Provider run hospital - medium secure unit<br>87 - Independent Sector Healthcare Provider run hospital - excluding medium secure unit<br>88 - Hospice<br>89 - ORGANISATION responsible for forced repatriation<br>98 - Not applicable<br>99 - Not known  |  |
| MHS501Hospital  | DESTINATION OF DISCHARGE (HOSPITAL PROVIDER SPELL) | Data Item | Amendment          |  | 55 - NHS run Care Home With Nursing<br>56 - NHS run Care Home Without Nursing<br>67 - Local Authority residential accommodation - Care Home With Nursing<br>68 - Local Authority residential accommodation - 24 hour on site staffed tenancy<br>69 - Local Authority residential accommodation - less than 24 hour on site staffed tenancy<br>70 - Local Authority residential accommodation - Care Home Without Nursing<br>86 - Non-NHS (other than Local Authority) run Care Home with Nursing<br>89 - Non-NHS (other than Local Authority) run Care Home Without Nursing<br>90 - Non-NHS run hospital - Care Home With Nursing<br>91 - Non-NHS run hospital - Care Home Without Nursing | New codes need for more accurate reporting |

| Group/ Table      | Item Name / Level                                       | Item Type | Item Amend Type | Previous  | New   | Change Reason(s)   |
|-------------------|---|-----------|-----------------|---|---|--|
|                   |   |           |                 |   | 92 - Non-NHS run hospital - 24 hour on site staffed tenancy<br>93 - Non-NHS run hospital - less than 24 hour on site staffed tenancy  |  |
| MHS101Referral    | CLINICAL RESPONSE PRIORITY TYPE                         | Data Item | Amendment       | 1 - Emergency<br>2 - Urgent/serious<br>3 - Routine                          | 1 - Emergency<br>2 - Urgent/serious<br>3 - Routine<br>4 - Very Urgent   | The clinical response priorities are insufficient for categorising how urgent/emergency MH services respond to referrals so an additional category of "very urgent" is required. |
| MHS101Referral    | SPECIALISED MENTAL HEALTH SERVICE CATEGORY CODE         | Data Item | Amendment       |   | Warning - Specialised Mental Health Service Category Code is for a code that was not live in the reference tables at any point during the reporting period.<br>Specialised Mental Health Service Category Code=<SpecialisedMHServiceCode> | New validation added to ensure the code is / was valid at time of reporting  |
| MHS101Referral    | REFERRING CARE PROFESSIONAL STAFF GROUP (MENTAL HEALTH) | Data Item | Amendment       | M04 - General Practitioner With A Special Interest<br>A04 - Drama Therapist | M04 - General Practitioner With Extended Roles (GPwER)<br>A04 - Dramatherapist  | National Codes changed in Data Dictionary, changed to reflect  |
| MHS201CareContact | SPECIALISED MENTAL HEALTH SERVICE CATEGORY CODE         | Data Item | Amendment       |   | Warning - Specialised Mental Health Service Category Code is for a code that was not live in the reference tables at any point during the reporting period.<br>Specialised Mental Health Service Category Code=<SpecialisedMHServiceCode> | New validation added to ensure the code is / was valid at time of reporting  |
| MHS201CareContact | CONSULTATION MEDIUM USED                                | Data Item | Amendment       | CONSULTATION MEDIUM USED  | CONSULTATION MECHANISM (MENTAL HEALTH)  | Data item renamed as it clashed with other data sets   |
| MHS201CareContact | CONSULTATION MECHANISM (MENTAL HEALTH)                  | Data Item | Amendment       |   | Online instant messaging  | New consultation mechanism added to the code list to cover online  |

| Group/ Table             | Item Name / Level                          | Item Type | Item Amend Type | Previous   | New   | Change Reason(s)   |
|--------------------------|--|-----------|-----------------|--|---|--|
|                          |  |           |                 |  |   | messaging interactions   |
| MHS201CareContact        | CARE CONTACT PATIENT THERAPY MODE          | Data Item | Addition        |  | CARE CONTACT PATIENT THERAPY MODE   | The new item has been included within IAPT v2.0 and meets both MHSDS and IAPT requirements. If the data sets were to merge, this item would need to be adopted.  |
| MHS009CarePlanAgreement  | CARE PLAN CONTENT AGREED BY                | Data Item | Amendment       |  | 16 - Family member or carer with parental responsibility  | New code need for more accurate reporting  |
| MHS503As signedCare Prof | TREATMENT FUNCTION CODE (MENTAL HEALTH)    | Data Item | Amendment       | 700 - Learning Disability<br>710 - Adult Mental illness<br>713 - Psychotherapy<br>724 - Perinatal Psychiatry   | Addition of:<br>730 - Neuropsychiatry Service<br>656 - Clinical Psychology Service<br><br>Amend:<br>700 - Disability Service<br>710 - Adult Mental Health Service<br>713 - Medical Psychotherapy Service<br>724 - Perinatal Mental Health Service   | New and renamed codes for more accuracy and clarity in reporting   |
| MHS203OtherAttend        | OTHER PERSON IN ATTENDANCE AT CARE CONTACT | Data Item | Amendment       | Advocacy Role<br>01 - Independent Advocate (Family Member)<br>02 - Independent Advocate (Independent Person)<br>03 - Independent Mental Capacity Advocate (IMCA)<br>04 - Independent Mental Health Advocate (IMHA)<br>05 - Non Instructed Advocate<br>Non-Advocacy Role<br>10 - Parent or relative<br>11 - Friend or neighbour<br>12 - Care Worker | 01 – Independent Advocate (Family Member)<br>02 - Independent Advocate (Independent Person)<br>03 - Independent Mental Capacity Advocate (IMCA)<br>04 - Independent Mental Health Advocate (IMHA)<br>05 - Non Instructed Advocate<br>10 - Parent or relative (Non-Advocate)<br>11 - Friend or neighbour (Non-Advocate)<br>12 - Care Worker (Non-Advocate) | New codes need for more accurate reporting. The data dictionary is making all national codes make sense in their own right and to allow possible future importing of the code lists all labels must have a valid value. All headings therefore have been removed and to make the description more meaningful the (now) old header is |

| Group/ Table                             | Item Name / Level  | Item Type | Item Amend Type | Previous   | New   | Change Reason(s)   |
|--|--|-----------|-----------------|--|---|--|
|  |  |           |                 |  |   | a suffix where appropriate.  |
| MHS010As<br>sTechToSu<br>pportDisTy<br>p | PRESCRIPTION<br>TIMESTAMP<br>(ASSISTIVE<br>TECHNOLOGY)   | Data Item | Amendment       | an10 (CCYY-MM-DD)  | max an25 (CCYY-MM-<br>DDTHH:MM:SS+HH:SS)  | DDA have mandated timestamping on certain time/date fields linked to SNOMED, so to accommodate this the format needs to change |
| MHS011So<br>cPerCircum<br>stances        | SOCIAL AND<br>PERSONAL<br>CIRCUMSTANCE<br>RECORDED<br>TIMESTAMP                                    | Data Item | Amendment       | an10 (CCYY-MM-DD)  | max an25 (CCYY-MM-<br>DDTHH:MM:SS+HH:SS)  | DDA have mandated timestamping on certain time/date fields linked to SNOMED, so to accommodate this the format needs to change |
| MHS103Ot<br>herReason<br>Referral        | OTHER REASON<br>FOR REFERRAL<br>(MENTAL<br>HEALTH)   | Data Item | Amendment       | 24 - Neurodevelopmental<br>Conditions, excluding Autism<br>Spectrum Disorder<br>25 - Suspected Autism Spectrum<br>Disorder<br>26 - Diagnosed Autism Spectrum<br>Disorder   | 24 - Neurodevelopmental Conditions,<br>excluding Autism<br>25 - Suspected Autism<br>26 - Diagnosed Autism   | Autism Spectrum Disorder is an outdated term and has been replaced with Autism   |
| MHS101Re<br>ferral                       | PRIMARY<br>REASON FOR<br>REFERRAL<br>(MENTAL<br>HEALTH)  | Data Item | Amendment       | 24 - Neurodevelopmental<br>Conditions, excluding Autism<br>Spectrum Disorder<br>25 - Suspected Autism Spectrum<br>Disorder<br>26 - Diagnosed Autism Spectrum<br>Disorder   | 24 - Neurodevelopmental Conditions,<br>excluding Autism<br>25 - Suspected Autism<br>26 - Diagnosed Autism   | Autism Spectrum Disorder is an outdated term and has been replaced with Autism   |
| MHS502W<br>ardStay                       | Hospital Bed Type<br>(Mental Health)<br><br>MENTAL HEALTH<br>ADMITTED<br>PATIENT<br>CLASSIFICATION | Data Item | Amendment       | 10 - Acute adult mental health care<br>11 - Acute older adult mental health<br>care (organic and functional)<br>12 - Adult Psychiatric Intensive<br>Care Unit (acute mental health<br>care)<br>13 - Adult Eating Disorders<br>14 - Mother and baby | 10 - Acute adult mental health care<br>11 - Acute older adult mental health<br>care (organic and functional)<br>12 - Adult Psychiatric Intensive Care Unit<br>(acute mental health care)<br>13 - Adult Eating Disorders<br>14 - Mother and baby<br>15 - Adult Learning Disabilities | New and renamed codes for more accuracy and clarity in reporting   |

| Group/<br>Table | Item Name / Level | Item Type | Item Amend<br>Type | Previous  | New   | Change Reason(s) |
|-----------------|-------------------|-----------|--------------------|---|---|------------------|
|                 |                   |           |                    | 15 - Adult Learning Disabilities<br>16 - Adult Low secure rehabilitation units<br>17 - Adult High dependency rehabilitation<br>18 - Adult Long-term high dependency rehabilitation unit<br>19 - Adult Low secure<br>20 - Adult Medium secure<br>21 - Adult High secure<br>22 - Adult Neuro-psychiatry / Acquired Brain Injury<br>23 - General Child and Adolescent Mental Health (CAMHS) inpatient - Child (including High Dependency)<br>24 - General Child and Adolescent Mental Health (CAMHS) inpatient - Adolescent (including High Dependency)<br>25 - Eating Disorders inpatient - Adolescent (above 12)<br>26 - Eating Disorders inpatient - Child (12 years and under)<br>27 - Child and Young Person Low Secure Mental Illness<br>28 - Child and Young Person Medium Secure Mental Illness<br>29 - Child Mental Health inpatient services for the Deaf<br>30 - Child and Young Person Learning Disabilities / Autistic Spectrum Disorder inpatient<br>31 - Child and Young Person Low Secure Learning Disabilities<br>32 - Child and Young Person Medium Secure Learning Disabilities<br>33 - Severe Obsessive Compulsive Disorder and Body Dysmorphic Disorder - Adolescent<br>34 - Child and Young Person Psychiatric Intensive Care Unit | 17 - Adult High dependency rehabilitation<br>19 - Adult Low secure<br>20 - Adult Medium secure<br>21 - Adult High secure<br>22 - Adult Neuro-psychiatry / Acquired Brain Injury<br>23 - General child and young person mental health inpatient - Child (including High Dependency)<br>24 - General child and young person mental health inpatient - Young person (including High Dependency)<br>25 - Eating Disorders inpatient - Young person (above 12)<br>26 - Eating Disorders inpatient - Child (12 years and under)<br>27 - Child and Young Person Low Secure Mental Illness<br>28 - Child and Young Person Medium Secure Mental Illness<br>29 - Child Mental Health inpatient services for the Deaf<br>30 - Child and Young Person Learning Disabilities / Autistic Spectrum Disorder inpatient<br>31 - Child and Young Person Low Secure Learning Disabilities<br>32 - Child and Young Person Medium Secure Learning Disabilities<br>33 - Severe Obsessive Compulsive Disorder and Body Dysmorphic Disorder - Young person<br>34 - Child and Young Person Psychiatric Intensive Care Unit<br>35 - Adult continuing care<br>36 - Adult community rehabilitation<br>37 - Adult highly specialist high dependency rehabilitation<br>38 - Adult longer term high dependency rehabilitation unit<br>39 - Adult mental health inpatient services for the Deaf |                  |

| Group/ Table                | Item Name / Level  | Item Type | Item Amend Type | Previous   | New   | Change Reason(s)  |
|-----------------------------|--|-----------|-----------------|--|---|---|
|                             |  |           |                 | 35 - Adult Continuing care unit<br>36 - Adult Community rehabilitation unit<br>37 - Adult Highly specialist inpatient rehabilitation unit  | 40 - Adult personality disorder   |   |
| MHS103OtherReasonReferral   | OTHER REASON FOR REFERRAL (MENTAL HEALTH)                          | Data Item | Amendment       |  | Addition of:<br>30 - Behaviours that challenge due to a Learning Disability or Autism   | New code needed for more accurate reporting                                 |
| MHS006MHCCareCoordinated    | CARE PROFESSIONAL SERVICE OR TEAM TYPE ASSOCIATION (MENTAL HEALTH) | Data Item | Amendment       |  | F01 - Mental Health Support Team<br>F02 - Maternal Mental Health Service<br>F03 - Mental Health Services for Deaf people<br>F04 - Veterans Complex Treatment Service<br>F05 - Enhanced care in care homes teams<br>F06 - Mental Health and Wellbeing Hubs   | New codes added to the code list  |
| MHS102ServiceTypeReferredTo | SERVICE OR TEAM TYPE REFERRED TO (MENTAL HEALTH)                   | Data Item | Amendment       | A01 - Day Care Service<br>A02 - Crisis Resolution Team/Home Treatment Service<br>A03 - Crisis Resolution Team<br>A04 - Home Treatment Service<br>A05 - Primary Care Mental Health Service<br>A06 - Community Mental Health Team - Functional<br>A07 - Community Mental Health Team - Organic<br>A08 - Assertive Outreach Team<br>A09 - Community Rehabilitation Service<br>A10 - General Psychiatric Service<br>A11 - Psychiatric Liaison Service<br>A12 - Psychotherapy Service<br>A13 - Psychological Therapy Service (non IAPT)<br>A14 - Early Intervention Team for Psychosis<br>A15 - Young Onset Dementia Team<br>A16 - Personality Disorder Service<br>A17 - Memory Services/Clinic<br>A18 - Single Point of Access Service | A01 - Day Care Service<br>A02 - Crisis Resolution Team/Home Treatment Service<br>A05 - Primary Care Mental Health Service<br>A06 - Community Mental Health Team - Functional<br>A07 - Community Mental Health Team - Organic<br>A08 - Assertive Outreach Team<br>A09 - Community Rehabilitation Service<br>A10 - General Psychiatric Service<br>A11 - Psychiatric Liaison Service<br>A12 - Psychotherapy Service<br>A13 - Psychological Therapy Service (non IAPT)<br>A14 - Early Intervention Team for Psychosis<br>A15 - Young Onset Dementia Team<br>A16 - Personality Disorder Service<br>A17 - Memory Services/Clinic<br>A18 - Single Point of Access Service<br>A19 - 24/7 Crisis Response Line<br>A20 - Health Based Place Of Safety Service<br>A21 - Crisis Café/Safe Haven/Sanctuary Service | Team type list amended for more clarity and new ones added that were missed |

| Group/<br>Table | Item Name / Level | Item Type | Item Amend<br>Type | Previous   | New   | Change Reason(s) |
|-----------------|-------------------|-----------|--------------------|--|---|------------------|
|                 |                   |           |                    | A19 - 24/7 Crisis Response Line<br>A20 - Health Based Place Of Safety Service<br>A21 - Crisis Café/Safe Haven/Sanctuary Service<br>A22 - Walk-in Crisis Assessment Unit Service<br>A23 - Psychiatric Decision Unit Service<br>A24 - Acute Day Service<br>A25 - Crisis House Service<br>B01 - Forensic Mental Health Service<br>B02 - Forensic Learning Disability Service<br>C01 - Autistic Spectrum Disorder Service<br>C02 - Specialist Perinatal Mental Health Community Service<br>C04 - Neurodevelopment Team<br>C05 - Paediatric Liaison Service<br>C06 - Looked After Children Service<br>C07 - Youth Offending Service<br>C08 - Acquired Brain Injury Service<br>C10 - Community Eating Disorder Service<br>D01 - Substance Misuse Team<br>D02 - Criminal Justice Liaison and Diversion Service<br>D03 - Prison Psychiatric Inreach Service<br>D04 - Asylum Service<br>D05 - Individual Placement and Support Service<br>D06 - Mental Health In Education Service<br>D07 - Problem Gambling Service<br>D08 - Rough Sleeping Service<br>E01 - Community Team for Learning Disabilities<br>E02 - Epilepsy/Neurological Service | A22 - Walk-in Crisis Assessment Unit Service<br>A23 - Psychiatric Decision Unit Service<br>A24 - Acute Day Service<br>A25 - Crisis House Service<br>B01 - Forensic Mental Health Service<br>B02 - Forensic Learning Disability Service<br>C01 - Autistic Spectrum Disorder Service<br>C02 - Specialist Perinatal Mental Health Community Service<br>C04 - Neurodevelopment Team<br>C05 - Paediatric Liaison Service<br>C06 - Looked After Children Service<br>C07 - Youth Offending Service<br>C08 - Acquired Brain Injury Service<br>C10 - Community Eating Disorder Service<br>D01 - Substance Misuse Team<br>D02 - Criminal Justice Liaison and Diversion Service<br>D03 - Prison Psychiatric Inreach Service<br>D04 - Asylum Service<br>D05 - Individual Placement and Support Service<br>D06 - Mental Health In Education Service<br>D07 - Problem Gambling Service<br>D08 - Rough Sleeping Service<br>E01 - Community Team for Learning Disabilities<br>E02 - Epilepsy/Neurological Service<br>E03 - Specialist Parenting Service<br>E04 - Enhanced/Intensive Support Service<br>Z01 - Other Mental Health Service - in scope of National Tariff Payment System<br>Z02 - Other Mental Health Service - out of scope of National Tariff Payment System |                  |

| Group/ Table                  | Item Name / Level                                | Item Type | Item Amend Type | Previous  | New  | Change Reason(s)   |
|-------------------------------|--|-----------|-----------------|---|--|--|
|                               |  |           |                 | E03 - Specialist Parenting Service<br>E04 - Enhanced/Intensive Support Service<br>Z01 - Other Mental Health Service - in scope of National Tariff Payment System<br>Z02 - Other Mental Health Service - out of scope of National Tariff Payment System  |  |  |
| MHS102ServiceTypeReferredTo   | SERVICE OR TEAM TYPE REFERRED TO (MENTAL HEALTH) | Data Item | Amendment       |   | F01 - Mental Health Support Team<br>F02 - Maternal Mental Health Service<br>F03 - Mental Health Services for Deaf people<br>F04 - Veterans Complex Treatment Service<br>F05 - Enhanced care in care homes teams<br>F06 - Mental Health and Wellbeing Hubs  | New codes added to the code list                                   |
| MHS301GroupSession            | SERVICE OR TEAM TYPE REFERRED TO (MENTAL HEALTH) | Data Item | Amendment       |   | F01 - Mental Health Support Team<br>F02 - Maternal Mental Health Service<br>F03 - Mental Health Services for Deaf people<br>F04 - Veterans Complex Treatment Service<br>F05 - Enhanced care in care homes teams<br>F06 - Mental Health and Wellbeing Hubs  | New codes added to the code list                                   |
| MHS505RestrictiveIntervention | RESTRICTIVE INTERVENTION REASON                  | Data Item | Amendment       | 10 - Prevent a patient being violent to others<br>11 - Prevent a patient causing serious harm to themselves<br>12 - Prevent a patient causing serious physical injury to themselves by accident<br>13 - Lawfully administer medicines or other medical treatment<br>14 - Facilitate personal care<br>15 - Facilitate nasogastric feeding<br>16 - Prevent the patient exhibiting extreme and prolonged over-activity<br>17 - Prevent the patient exhibiting otherwise dangerous behaviour;<br>18 - Undertake a search of the patient's clothing or property to ensure the safety of others | 10 - Prevent a patient being violent to others<br>11 - Prevent a patient causing serious harm to themselves<br>12 - Prevent a patient causing serious physical injury to themselves by accident<br>13 - Lawfully administer medicines or other medical treatment<br>14 - Facilitate personal care<br>15 - Facilitate nasogastric feeding<br>16 - Prevent the patient exhibiting extreme and prolonged over-activity<br>17 - Prevent the patient exhibiting otherwise dangerous behaviour;<br>18 - Undertake a search of the patient's clothing or property to ensure the safety of others<br>19 - Prevent the patient absconding from lawful custody | Code list altered for more accuracy following an NHSE consultation |

| Group/ Table        | Item Name / Level  | Item Type | Item Amend Type | Previous  | New  | Change Reason(s) |
|---------------------|--|-----------|-----------------|---|--|------------------|
|                     |  |           |                 | 19 - Prevent the patient absconding from lawful custody<br>98 - Other (not listed)<br>99 - Not Known (Not Recorded)   | 98 - Other (not listed)<br>99 - Not Known (Not Recorded)   |                  |
| MHS501HospProvSpell | METHOD OF DISCHARGE CODE (MENTAL HEALTH HOSPITAL PROVIDER SPELL) | Data Item | Amendment       | 1 - Patient discharged on clinical advice or with clinical consent<br>3 - Patient discharged by mental health review tribunal, Home Secretary or court<br>4 - Patient died<br>6 - Patient discharged him/herself<br>7 - Patient discharged by a relative or advocate<br>8 - Not applicable - Hospital Provider Spell not finished at episode end (i.e. not discharged) or current episode unfinished<br>9 - Not known   | 1 - Patient discharged on clinical advice or with clinical consent<br>3 - Patient discharged by mental health review tribunal, Home Secretary or court<br>4 - Patient died<br>6 - Patient discharged him/herself<br>7 - Patient discharged by a relative or advocate<br>8 - Not applicable - (Hospital Provider Spell not finished at episode end (i.e. not discharged) or current episode unfinished)<br>9 - Method of Discharge not know   | New code list    |
| MHS501HospProvSpell | PLANNED DESTINATION OF DISCHARGE (HOSPITAL PROVIDER SPELL)       | Data Item | Amendment       | 19 - Usual place of residence unless listed below, for example, a private dwelling whether owner occupied or owned by local authority, housing association or other landlord. This includes wardened accommodation but not residential accommodation where health care is provided. It also includes PATIENTS with no fixed abode.<br>29 - Temporary place of residence when usually resident elsewhere (includes hotel, residential educational establishment)<br>30 - Repatriation from high security psychiatric accommodation in an NHS Hospital Provider (NHS Trust)<br>37 - Court<br>39 - Prison<br>40 - Police Station/Police Custody Suite<br>48 - High Security Psychiatric Hospital, Scotland | 19 - Usual place of residence unless listed below, for example, a private dwelling whether owner occupied or owned by Local Authority, housing association or other landlord. This includes wardened accommodation but not residential accommodation where health care is provided. It also includes PATIENTS with no fixed abode.<br>29 - Temporary place of residence when usually resident elsewhere (includes hotel, residential Educational Establishment)<br>30 - Repatriation from high security psychiatric accommodation in an NHS Hospital Provider (NHS Trust or NHS Foundation Trust)<br>37 - Court<br>40 - Penal establishment<br>42 - Police Station / Police Custody Suite<br>48 - High Security Psychiatric Hospital, Scotland<br>49 - NHS other Hospital Provider - high security psychiatric accommodation | New code list    |

| Group/<br>Table     | Item Name / Level   | Item Type | Item Amend<br>Type | Previous   | New   | Change Reason(s) |
|---------------------|---|-----------|--------------------|--|---|------------------|
|                     |   |           |                    | 49 - NHS other hospital provider - high security psychiatric accommodation<br>50 - NHS other hospital provider - medium secure unit<br>51 - NHS other hospital provider - ward for general PATIENTS or the younger physically disabled<br>52 - NHS other hospital provider - ward for maternity PATIENTS or neonates<br>53 - NHS other hospital provider - ward for PATIENTS who are mentally ill or have learning disabilities<br>54 - NHS run Care Home<br>65 - Local Authority residential accommodation i.e. where care is provided<br>66 - Local Authority foster care<br>79 - Not applicable - PATIENT died or still birth<br>84 - Non-NHS run hospital - medium secure unit<br>85 - Non-NHS (other than Local Authority) run Care Home<br>87 - Non-NHS run hospital<br>88 - Non-NHS (other than Local Authority) run Hospice<br>94 - Forced Repatriation<br>98 - Not applicable<br>99 - Not known | 50 - NHS other Hospital Provider - medium secure unit<br>51 - NHS other Hospital Provider - WARD for general PATIENTS or the younger physically disabled<br>52 - NHS other Hospital Provider - WARD for maternity PATIENTS or Neonates<br>53 - NHS other Hospital Provider - WARD for PATIENTS who are mentally ill or have Learning Disabilities<br>55 - Care Home With Nursing<br>56 - Care Home Without Nursing<br>66 - Local Authority foster care<br>79 - PATIENT died or stillbirth<br>84 - Independent Sector Healthcare Provider run hospital - medium secure unit<br>87 - Independent Sector Healthcare Provider run hospital - excluding medium secure unit<br>88 - Hospice<br>89 - ORGANISATION responsible for forced repatriation<br>98 - Not applicable<br>99 - Not known |                  |
| MHS501HospProvSpell | ADMISSION SOURCE CODE (MENTAL HEALTH HOSPITAL PROVIDER SPELL) | Data Item | Amendment          | 19 - Usual place of residence unless listed below, for example, a private dwelling whether owner occupied or owned by Local Authority, housing association or other landlord. This includes wardened accommodation but not residential accommodation where health care is provided. It also  | 19 - Usual place of residence unless listed below, for example, a private dwelling whether owner occupied or owned by Local Authority, housing association or other landlord. This includes wardened accommodation but not residential accommodation where health care is provided. It also includes PATIENTS with no fixed abode.  | New code list    |

| Group/<br>Table    | Item Name / Level                        | Item Type | Item Amend<br>Type | Previous   | New  | Change Reason(s) |
|--------------------|--|-----------|--------------------|--|--|------------------|
|                    |  |           |                    | <p>includes PATIENTS with no fixed abode.</p> <p>29 - Temporary place of residence when usually resident elsewhere (e.g. hotels, residential Educational Establishments)</p> <p>40 - Penal Establishment</p> <p>41 - Court</p> <p>42 - Police Station/Police Custody Suite</p> <p>49 - NHS other Hospital Provider - high security psychiatric accommodation in an NHS Hospital Provider (NHS Trust or NHS Foundation Trust)</p> <p>51 - NHS other Hospital Provider - WARD for general PATIENTS or the younger physically disabled or A &amp; E department</p> <p>52 - NHS other Hospital Provider - WARD for maternity PATIENTS or Neonates</p> <p>53 - NHS other Hospital Provider - WARD for PATIENTS who are mentally ill or have Learning Disabilities</p> <p>54 - NHS run Care Home</p> <p>65 - Local Authority residential accommodation i.e. where care is provided</p> <p>66 - Local Authority foster care</p> <p>85 - Non-NHS (other than Local Authority) run Care Home</p> <p>87 - Non NHS run hospital</p> <p>88 - Non-NHS (other than Local Authority) run Hospice</p> <p>98 - Not applicable</p> <p>99 - Not Known</p> | <p>29 - Temporary place of residence when usually resident elsewhere (e.g. hotels, residential Educational Establishments)</p> <p>37 - Court</p> <p>40 - Penal establishment</p> <p>42 - Police Station / Police Custody Suite</p> <p>49 - NHS other Hospital Provider - high security psychiatric accommodation in an NHS Hospital Provider (NHS Trust or NHS Foundation Trust)</p> <p>51 - NHS other Hospital Provider - WARD for general PATIENTS or the younger physically disabled or Emergency Care Department</p> <p>52 - NHS other Hospital Provider - WARD for maternity PATIENTS or Neonates</p> <p>53 - NHS other Hospital Provider - WARD for PATIENTS who are mentally ill or have Learning Disabilities</p> <p>54 - NHS run Care Home</p> <p>65 - Local Authority residential accommodation where care is provided</p> <p>66 - Local Authority foster care</p> <p>85 - Non-NHS (other than Local Authority) run Care Home</p> <p>87 - Non NHS run hospital</p> <p>88 - Non-NHS (other than Local Authority) run Hospice</p> <p>98 - Not applicable</p> <p>99 - Not Known</p> |                  |
| MHS501HospProvSpel | DESTINATION OF DISCHARGE CODE (HOSPITAL) | Data Item | Amendment          | <p>19 - Usual place of residence unless listed below, for example, a private dwelling whether owner occupied or owned by local</p>   | <p>19 - Usual place of residence unless listed below, for example, a private dwelling whether owner occupied or owned by Local Authority, housing association or other</p>   | New code list    |

| Group/<br>Table | Item Name / Level  | Item Type | Item Amend<br>Type | Previous   | New  | Change Reason(s) |
|-----------------|--------------------|-----------|--------------------|--|--|------------------|
|                 | PROVIDER<br>SPELL) |           |                    | <p>authority, housing association or other landlord. This includes wardened accommodation but not residential accommodation where health care is provided. It also includes PATIENTS with no fixed abode.</p> <p>29 - Temporary place of residence when usually resident elsewhere (includes hotel, residential educational establishment)</p> <p>30 - Repatriation from high security psychiatric accommodation in an NHS Hospital Provider (NHS Trust)</p> <p>37 - Court</p> <p>39 - Prison</p> <p>40 - Police Station/Police Custody Suite</p> <p>48 - High Security Psychiatric Hospital, Scotland</p> <p>49 - NHS other hospital provider - high security psychiatric accommodation</p> <p>50 - NHS other hospital provider - medium secure unit</p> <p>51 - NHS other hospital provider - ward for general PATIENTS or the younger physically disabled</p> <p>52 - NHS other hospital provider - ward for maternity PATIENTS or neonates</p> <p>53 - NHS other hospital provider - ward for PATIENTS who are mentally ill or have learning disabilities</p> <p>54 - NHS run Care Home</p> <p>65 - Local Authority residential accommodation i.e. where care is provided</p> <p>66 - Local Authority foster care</p> <p>79 - Not applicable - PATIENT died or still birth</p> | <p>landlord. This includes wardened accommodation but not residential accommodation where health care is provided. It also includes PATIENTS with no fixed abode.</p> <p>29 - Temporary place of residence when usually resident elsewhere (includes hotel, residential Educational Establishment)</p> <p>30 - Repatriation from high security psychiatric accommodation in an NHS Hospital Provider (NHS Trust or NHS Foundation Trust)</p> <p>37 - Court</p> <p>40 - Penal establishment</p> <p>42 - Police Station / Police Custody Suite</p> <p>48 - High Security Psychiatric Hospital, Scotland</p> <p>49 - NHS other Hospital Provider - high security psychiatric accommodation</p> <p>50 - NHS other Hospital Provider - medium secure unit</p> <p>51 - NHS other Hospital Provider - WARD for general PATIENTS or the younger physically disabled</p> <p>52 - NHS other Hospital Provider - WARD for maternity PATIENTS or Neonates</p> <p>53 - NHS other Hospital Provider - WARD for PATIENTS who are mentally ill or have Learning Disabilities</p> <p>55 - Care Home With Nursing</p> <p>56 - Care Home Without Nursing</p> <p>66 - Local Authority foster care</p> <p>79 - PATIENT died or stillbirth</p> <p>84 - Independent Sector Healthcare Provider run hospital - medium secure unit</p> <p>87 - Independent Sector Healthcare Provider run hospital - excluding medium secure unit</p> <p>88 - Hospice</p> <p>89 - ORGANISATION responsible for forced repatriation</p> <p>98 - Not applicable</p> |                  |

| Group/ Table                | Item Name / Level   | Item Type | Item Amend Type | Previous  | New   | Change Reason(s)                                     |
|-----------------------------|---|-----------|-----------------|---|---|--|
|                             |   |           |                 | 84 - Non-NHS run hospital - medium secure unit<br>85 - Non-NHS (other than Local Authority) run Care Home<br>87 - Non-NHS run hospital<br>88 - Non-NHS (other than Local Authority) run Hospice<br>94 - Forced Repatriation to another country<br>98 - Not applicable<br>99 - Not known | 99 - Not known  |  |
| MHS302Dr<br>opInContac<br>t | CONSULTATION<br>MEDIUM USED                               | Data Item | Amendment       | CONSULTATION MEDIUM USED  | CONSULTATION MECHANISM (MENTAL HEALTH)  | Data item renamed as it clashed with other data sets |
| MHS302Dr<br>opInContac<br>t | CONSULTATION<br>MECHANISM<br>(MENTAL<br>HEALTH)           | Data Item | Amendment       | 01 - Face to face communication<br>02 - Telephone<br>04 - Talk type for a person unable to speak<br>05 - Email<br>06 - Text Messaging (Asynchronous)<br>08 - Instant messaging (Synchronous)<br>09 - Video consultation<br>10 - Web-based and Applications<br>98 - Other (not listed)   | 01 - Face to face<br>02 - Telephone<br>04 - Talk type for a person unable to speak<br>05 - Email<br>09 - Text Message (Asynchronous)<br>10 - Instant messaging (Synchronous)<br>11 - Video consultation<br>12 - Message Board (Asynchronous)<br>13 - Chat Room (Synchronous)<br>98 - Other (not listed) | New code list  |
| MHS201Ca<br>reContact       | CONSULTATION<br>MECHANISM<br>(MENTAL<br>HEALTH)           | Data Item | Amendment       | 01 - Face to face communication<br>02 - Telephone<br>04 - Talk type for a person unable to speak<br>05 - Email<br>06 - Text Messaging (Asynchronous)<br>08 - Instant messaging (Synchronous)<br>09 - Video consultation<br>10 - Web-based and Applications<br>98 - Other (not listed)   | 01 - Face to face<br>02 - Telephone<br>04 - Talk type for a person unable to speak<br>05 - Email<br>09 - Text Message (Asynchronous)<br>10 - Instant messaging (Synchronous)<br>11 - Video consultation<br>12 - Message Board (Asynchronous)<br>13 - Chat Room (Synchronous)<br>98 - Other (not listed) | New code list  |
| MHS501Ho<br>spProvSpel<br>l | METHOD OF<br>ADMISSION CODE<br>(MENTAL HEALTH<br>HOSPITAL | Data Item | Amendment       | 11 - Elective Admission: Waiting list<br>12 - Elective Admission: Booked<br>13 - Elective Admission: Planned  | 11 - Elective Admission: Waiting list<br>12 - Elective Admission: Booked<br>13 - Elective Admission: Planned  | New code list  |

| Group/<br>Table            | Item Name / Level      | Item Type | Item Amend<br>Type | Previous   | New  | Change Reason(s)                                |
|----------------------------|------------------------|-----------|--------------------|--|--|---|
|                            | PROVIDER<br>SPELL)     |           |                    | <p>21 - Emergency Admission: Emergency Care Department or dental casualty department of the Health Care Provider</p> <p>22 - Emergency Admission: General Practitioner: after a request for immediate admission has been made direct to a Hospital Provider, i.e. not through a Bed bureau, by a General Practitioner or deputy</p> <p>23 - Emergency Admission: Bed bureau</p> <p>24 - Emergency Admission: Consultant Clinic, of this or another Health Care Provider</p> <p>25 - Emergency Admission: Admission via Mental Health Crisis Resolution Team</p> <p>2A - Emergency Admission: Emergency Care Department of another provider where the patient had not been admitted</p> <p>2B - Emergency Admission: Transfer of an admitted patient from another Hospital Provider in an emergency</p> <p>2D - Emergency Admission: Other emergency admission</p> <p>81 - Other Admission: Transfer of any admitted patient from other Hospital Provider other than in an emergency</p> <p>98 - Not applicable</p> <p>99 - Not Known</p> | <p>21 - Emergency Admission: Emergency Care Department or dental casualty department of the Health Care Provider</p> <p>22 - Emergency Admission: General Practitioner: after a request for immediate admission has been made direct to a Hospital Provider, i.e. not through a Bed bureau, by a General Practitioner or deputy</p> <p>23 - Emergency Admission: Bed bureau</p> <p>24 - Emergency Admission: Consultant Clinic, of this or another Health Care Provider</p> <p>25 - Emergency Admission: Admission via Mental Health Crisis Resolution Team</p> <p>2A - Emergency Admission: Emergency Care Department of another provider where the patient had not been admitted</p> <p>2B - Emergency Admission: Transfer of an admitted patient from another Hospital Provider in an emergency</p> <p>2D - Emergency Admission: Other emergency admission</p> <p>81 - Other Admission: Transfer of any admitted patient from other Hospital Provider other than in an emergency</p> <p>98 - Not applicable</p> <p>99 - Not Known</p> |   |
| MHS003Ac<br>commStatu<br>s | ACCOMMODATIO<br>N TYPE | Data Item | Amendment          | <p>01 - Owner occupier</p> <p>02 - Tenant - Local Authority/Arms Length Management Organisation/Registered Landlord</p> <p>03 - Tenant - private landlord</p> <p>04 - Settled mainstream housing with family</p>   | <p>01 - Owner occupier</p> <p>02 - Tenant - Local Authority/Arms Length Management Organisation/registered social housing provider</p> <p>03 - Tenant - private landlord</p> <p>04 - Living with family</p> <p>05 - Living with friends</p> <p>06 - University or College accommodation</p>  | A new list of clearer and more concise statuses |

| Group/ Table       | Item Name / Level                      | Item Type | Item Amend Type | Previous  | New  | Change Reason(s)  |
|--------------------|--|-----------|-----------------|---|--|---|
|                    |  |           |                 | 05 - Settled mainstream housing with friends<br>06 - University or college accommodation<br>07 - Accommodation tied to job (including Armed Forces)<br>08 - Mobile accommodation<br>09 - Care home with nursing<br>10 - Care home without nursing<br>11 - Specialist housing i.e., suitable & support available to meet specific needs<br>12 - Rough sleeper<br>13 - Squatting<br>14 - Sofa surfing (sleeps on different friends floor each night)<br>15 - Staying with friends/family as a short term guest<br>16 - Bed and breakfast accommodation to prevent or relieve homelessness<br>17 - Sleeping in a night shelter<br>18 - Hostel to prevent or relieve homelessness<br>19 - Temporary housing to prevent or relieve homelessness<br>20 - Admitted patient settings<br>21 - Criminal justice settings<br>98 - Other (Not elsewhere classified) | 07 - Accommodation tied to job (including Armed Forces)<br>08 - Mobile accommodation<br>09 - Care home without nursing<br>10 - Care home with nursing<br>11 - Specialist Housing (with suitable adaptations to meet impairment needs and support to live independently)<br>12 - Rough sleeper<br>13 - Squatting<br>14 - Sofa surfing (sleeps on different friends floor each night)<br>15 - Staying with friends/family as a short term guest<br>16 - Bed and breakfast accommodation to prevent or relieve homelessness<br>17 - Sleeping in a night shelter<br>18 - Hostel to prevent or relieve homelessness<br>19 - Temporary housing to prevent or relieve homelessness<br>20 - Admitted patient settings<br>21 - Criminal justice settings<br>98 - Other (not listed) |   |
| MHS008CarePlanType | MENTAL HEALTH DELAYED DISCHARGE REASON | Data Item | Amendment       | 9 Lack of health care service provision<br>10 Lack of social care support<br>12 Awaiting residential special school or college placement or availability<br>13 Lack of local education support<br>14 Public safety concern unrelated to clinical treatment need (care team)   | U1 Lack of health care service provision<br>U2 Lack of social care support<br>P1 Awaiting residential special school or college placement or availability<br>Q1 Lack of local education support<br>R1 Public safety concern unrelated to clinical treatment need (care team)<br>R2 Public safety concern unrelated to clinical treatment need (Ministry of Justice)<br>S1 No lawful community care package available<br>T1 Due to legal processes  | New codes 9-18 previously added to the code list, therefore new prefixes added in line with current codes |

| Group/ Table           | Item Name / Level                      | Item Type | Item Amend Type | Previous   | New   | Change Reason(s)  |
|------------------------|--|-----------|-----------------|--|---|---|
|                        |  |           |                 | 15 Public safety concern unrelated to clinical treatment need (Ministry of Justice)<br>16 No lawful community care package available<br>17 Due to legal processes<br>18 No reason given  | 98 No reason given  |   |
| MHS504DelayedDischarge | MENTAL HEALTH DELAYED DISCHARGE REASON | Data Item | Amendment       | 9 Lack of health care service provision<br>10 Lack of social care support<br>12 Awaiting residential special school or college placement or availability<br>13 Lack of local education support<br>14 Public safety concern unrelated to clinical treatment need (care team)<br>15 Public safety concern unrelated to clinical treatment need (Ministry of Justice)<br>16 No lawful community care package available<br>17 Due to legal processes<br>18 No reason given | U1 Lack of health care service provision<br>U2 Lack of social care support<br>P1 Awaiting residential special school or college placement or availability<br>Q1 Lack of local education support<br>R1 Public safety concern unrelated to clinical treatment need (care team)<br>R2 Public safety concern unrelated to clinical treatment need (Ministry of Justice)<br>S1 No lawful community care package available<br>T1 Due to legal processes<br>98 No reason given   | New codes 9-18 previously added to the code list, therefore new prefixes added in line with current codes |
| MHS008CarePlanType     | MENTAL HEALTH DELAYED DISCHARGE REASON | Data Item | Addition        |  | 9 - Lack of health care service provision<br>10 - Lack of social care support<br>12 - Awaiting residential special school or college placement or availability<br>13 - Lack of local education support<br>14 - Public safety concern unrelated to clinical treatment need (care team)<br>15 - Public safety concern unrelated to clinical treatment need (Ministry of Justice)<br>16 - No lawful community care package available (non-clinical reason including impact of MM/PJ judgements)<br>17 - Due to legal processes<br>18 - No reason given | As part of the AT lining up, these new codes are required   |
| MHS504DelayedDischarge | MENTAL HEALTH DELAYED DISCHARGE REASON | Data Item | Addition        |  | 9 - Lack of health care service provision<br>10 - Lack of social care support<br>12 - Awaiting residential special school or college placement or availability  | As part of the AT lining up, these new codes are required   |

| Group/ Table          | Item Name / Level  | Item Type | Item Amend Type | Previous  | New   | Change Reason(s)   |
|-----------------------|--|-----------|-----------------|---|---|--|
|                       |  |           |                 |   | 13 - Lack of local education support<br>14 - Public safety concern unrelated to clinical treatment need (care team)<br>15 - Public safety concern unrelated to clinical treatment need (Ministry of Justice)<br>16 - No lawful community care package available (non-clinical reason including impact of MM/PJ judgements)<br>17 - Due to legal processes<br>18 - No reason given   |  |
| MHS803CareCluster     | CHILD AND ADOLESCENT MENTAL HEALTH NEEDS BASED GROUPING CODE | Data Item | Amendment       | 12 - Getting Help: Attention Deficit Hyperactivity Disorder (ADH)   | 12 - Getting Help: Attention Deficit Hyperactivity Disorder (ADHD)  | Code changed to match the data dictionary  |
| MHS901StaffDetails    | MAIN SPECIALTY CODE (MENTAL HEALTH)                          | Data Item | Amendment       | 700 - Intellectual Disability   | 700 - Learning Disability   | Code changed to match the data dictionary  |
| MHS503AsignedCareProf | TREATMENT FUNCTION CODE (MENTAL HEALTH)                      | Data Item | Amendment       | 700 - Intellectual Disability Service   | 700 - Learning Disability Service   | Code changed to match the data dictionary  |
| MHS503AsignedCareProf | TREATMENT FUNCTION CODE (MENTAL HEALTH)                      | Data Item | Amendment       | 319 - Respite Care Service<br>656 - Clinical Psychology Service<br>700 - Intellectual Disability Service<br>710 - Adult Mental Health Service<br>711 - Child and Adolescent Psychiatry Service<br>712 - Forensic Psychiatry Service<br>713 - Medical Psychotherapy Service<br>715 - Old Age Psychiatry Service<br>720 - Eating Disorders Service<br>721 - Addiction Service<br>722 - Liaison Psychiatry Service<br>723 - Psychiatric Intensive Care Service<br>724 - Perinatal Mental Health Service<br>725 - Mental Health Recovery and Rehabilitation Service | 319 - Respite Care Service<br>656 - Clinical Psychology Service<br>700 - Learning Disability Service<br>710 - Adult Mental Health Service<br>711 - Child and Adolescent Psychiatry Service<br>712 - Forensic Psychiatry Service<br>713 - Medical Psychotherapy Service<br>715 - Old Age Psychiatry Service<br>720 - Eating Disorders Service<br>721 - Addiction Service<br>722 - Liaison Psychiatry Service<br>723 - Psychiatric Intensive Care Service<br>724 - Perinatal Mental Health Service<br>725 - Mental Health Recovery and Rehabilitation Service<br>726 - Mental Health Dual Diagnosis Service<br>727 - Dementia Assessment Service<br>730 - Neuropsychiatry Service<br>348 - Post COVID-19 Syndrome Service | Intellectual Disability Service reverted back to Learning Disability Service and a new code for COVID-19 added |

| Group/ Table   | Item Name / Level  | Item Type | Item Amend Type | Previous  | New  | Change Reason(s)  |
|--|--|-----------|-----------------|---|--|---|
|  |  |           |                 | 726 - Mental Health Dual Diagnosis Service<br>727 - Dementia Assessment Service<br>730 - Neuropsychiatry Service  |  |   |
| MHS501Hospital   | PLANNED DESTINATION OF DISCHARGE (HOSPITAL PROVIDER SPELL) | Data Item | Amendment       |   | 94 - Forced Repatriation to another country  | New codes need for more accurate reporting                                  |
| MHS501Hospital   | DESTINATION OF DISCHARGE (HOSPITAL PROVIDER SPELL)         | Data Item | Amendment       |   | 94 - Forced Repatriation to another country  | New codes need for more accurate reporting                                  |
| MHS501Hospital   | DESTINATION OF DISCHARGE (HOSPITAL PROVIDER SPELL)         | Data Item | Amendment       | Y - Yes, the patient is in scope of Transforming Care<br>N - No, the patient is not in scope of Transforming Care | 1 - Patient with autism (and no Learning Disability) who is in scope of transforming care<br>2 - Patient with a Learning Disability (and no autism) who is in scope of transforming care<br>3 - Patient with autism and a Learning Disability who is in scope of transforming care<br>4 - No, the patient is not in scope of Transforming Care | The new flag wasn't granular enough, these options capture what is needed   |
| MHS101Referral   | PRIMARY REASON FOR REFERRAL (MENTAL HEALTH)                | Data Item | Amendment       |   | Addition of:<br>30 - Behaviours that challenge due to a Learning Disability or Autism  | New code need for more accurate reporting                                   |
| MHS401Mental Health Act Legal Status Classification Period | Mental Health Act Legal Status Classification Period       |           | Amendment       | Mental Health Act Legal Status Classification Period  | MHS401 Mental Health Act Legal Status Classification Assignment Period   | For consistency with the data items, Assignment has been added to the title |
| MHS013CurrencyModel  |  |           | Amendment       | R   | P  | Has been made a pilot table as it is only a pilot group                     |

| Group/ Table                          | Item Name / Level   | Item Type  | Item Amend Type | Previous                              | New   | Change Reason(s)  |
|---------------------------------------|---|------------|-----------------|---------------------------------------|---|---|
|                                       |   |            |                 |                                       |   | for the time being as it is developed   |
| MHS201CareContact                     | OFFER STATUS (COMMUNITY PERINATAL MENTAL HEALTH PARTNER ASSESSMENT) | Data Item  | Amendment       |                                       | OFFER STATUS (COMMUNITY PERINATAL MENTAL HEALTH PARTNER ASSESSMENT) | Item moved from the referral table to the contact table   |
| MHS505RestrictiveInterventionIncident |   | Data Table | Addition        | Restrictive Intervention              | Restrictive Intervention Incident                                   | The MHS505Restrictive Intervention table has been removed as the way of recording these is changing, it is being replaced with MHS505RestrictiveInterventionIncident. |
| MHS505RestrictiveInterventionIncident |   | Data Item  | Addition        | WARD STAY IDENTIFIER                  | RESTRICTIVE INTERVENTION INCIDENT IDENTIFIER                        | Included as part of the new Restrictive Intervention Incident table   |
| MHS505RestrictiveInterventionIncident |   | Data Item  | Addition        |                                       | HOSPITAL PROVIDER SPELL IDENTIFIER                                  | Included as part of the new Restrictive Intervention Incident table   |
| MHS505RestrictiveInterventionIncident |   | Data Item  | Addition        | START DATE (RESTRICTIVE INTERVENTION) | START DATE (RESTRICTIVE INTERVENTION INCIDENT)                      | Included as part of the new Restrictive Intervention Incident table   |
| MHS505RestrictiveInterventionIncident |   | Data Item  | Addition        | START TIME (RESTRICTIVE INTERVENTION) | START TIME (RESTRICTIVE INTERVENTION INCIDENT)                      | Included as part of the new Restrictive Intervention Incident table   |
| MHS505RestrictiveInterventionIncident | END DATE (RESTRICTIVE INTERVENTION)                                 | Data Item  | Addition        | END DATE (RESTRICTIVE INTERVENTION)   | END DATE (RESTRICTIVE INTERVENTION INCIDENT)                        | Included as part of the new Restrictive Intervention Incident table   |
| MHS505RestrictiveInterventionIncident | END TIME (RESTRICTIVE INTERVENTION)                                 | Data Item  | Addition        | END TIME (RESTRICTIVE INTERVENTION)   | END TIME (RESTRICTIVE INTERVENTION INCIDENT)                        | Included as part of the new Restrictive Intervention Incident table   |

| Group/ Table                          | Item Name / Level   | Item Type  | Item Amend Type | Previous  | New  | Change Reason(s)  |
|---------------------------------------|---|------------|-----------------|---|--|---|
| MHS505RestrictiveInterventionIncident | RESTRICTIVE INTERVENTION POST-INCIDENT REVIEW HELD INDICATOR (PATIENT)        | Data Item  | Addition        |   | RESTRICTIVE INTERVENTION POST-INCIDENT REVIEW HELD INDICATOR (PATIENT)   | Included as part of the new Restrictive Intervention Incident table   |
| MHS505RestrictiveInterventionIncident | RESTRICTIVE INTERVENTION POST-INCIDENT REVIEW NOT HELD REASON (PATIENT)       | Data Item  | Addition        |   | RESTRICTIVE INTERVENTION POST-INCIDENT REVIEW NOT HELD REASON (PATIENT)  | Included as part of the new Restrictive Intervention Incident table   |
| MHS505RestrictiveInterventionIncident | RESTRICTIVE INTERVENTION POST-INCIDENT REVIEW HELD INDICATOR (CARE PERSONNEL) | Data Item  | Addition        |   | RESTRICTIVE INTERVENTION POST-INCIDENT REVIEW HELD INDICATOR (CARE PERSONNEL)  | Included as part of the new Restrictive Intervention Incident table   |
| MHS505RestrictiveInterventionIncident | RESTRICTIVE INTERVENTION REASON   | Data Item  | Addition        |   | RESTRICTIVE INTERVENTION REASON  | Addition of the reason for the use of restrictive interventions       |
| MHS515RestrictiveInterventionType     |   | Data Table | Addition        |   | RESTRICTIVE INTERVENTION TYPE  | A new table to record restrictive interventions                       |
| MHS516PoliceAssistanceRequest         |   | Data Table | Addition        |   | POLICE ASSISTANCE REQUEST  | A new table to record police activity in restrictive interventions    |
| MHS101MPI                             | ETHNIC CATEGORY   | Data Item  | Amendment       | A British<br>B Irish<br>C Any other White background<br>D White and Black Caribbean<br>E White and Black African<br>F White and Asian<br>G Any other mixed background<br>H Indian<br>J Pakistani<br>K Bangladeshi<br>L Any other Asian background | A White - British<br>B White - Irish<br>C White - Any other White background<br>D Mixed - White and Black Caribbean<br>E Mixed - White and Black African<br>F Mixed - White and Asian<br>G Mixed - Any other mixed background<br>H Asian or Asian British - Indian<br>J Asian or Asian British - Pakistani<br>K Asian or Asian British - Bangladeshi | Addition of missing prefixes to each of the national code definitions |

| Group/ Table                    | Item Name / Level                    | Item Type | Item Amend Type | Previous   | New   | Change Reason(s)   |
|---------------------------------|--------------------------------------|-----------|-----------------|--|---|--|
|                                 |                                      |           |                 | M Caribbean<br>N African<br>P Any other Black background<br>R Chinese<br>S Any other ethnic group<br>Z Not stated<br>99 Not known  | L Asian or Asian British - Any other Asian background<br>M Black or Black British - Caribbean<br>N Black or Black British - African<br>P Black or Black British - Any other Black background<br>R Other Ethnic Groups - Chinese<br>S Other Ethnic Groups - Any other ethnic group<br>Z Not stated<br>99 Not known   |  |
| MHS302MentalHealthDropInContact | ETHNIC CATEGORY                      | Data Item | Amendment       | A British<br>B Irish<br>C Any other White background<br>D White and Black Caribbean<br>E White and Black African<br>F White and Asian<br>G Any other mixed background<br>H Indian<br>J Pakistani<br>K Bangladeshi<br>L Any other Asian background<br>M Caribbean<br>N African<br>P Any other Black background<br>R Chinese<br>S Any other ethnic group<br>Z Not stated<br>99 Not known | A White - British<br>B White - Irish<br>C White - Any other White background<br>D Mixed - White and Black Caribbean<br>E Mixed - White and Black African<br>F Mixed - White and Asian<br>G Mixed - Any other mixed background<br>H Asian or Asian British - Indian<br>J Asian or Asian British - Pakistani<br>K Asian or Asian British - Bangladeshi<br>L Asian or Asian British - Any other Asian background<br>M Black or Black British - Caribbean<br>N Black or Black British - African<br>P Black or Black British - Any other Black background<br>R Other Ethnic Groups - Chinese<br>S Other Ethnic Groups - Any other ethnic group<br>Z Not stated<br>99 Not known | Addition of missing prefixes to each of the national code definitions  |
| MHS201CareContact               | REASONABLE ADJUSTMENT MADE INDICATOR | Data Item | Amendment       | Y Yes - a Reasonable Adjustment was made for the patient<br>N No - a Reasonable Adjustment was not made for the patient  | Y Yes - a Reasonable Adjustment was made for the patient<br>N No - a Reasonable Adjustment was not made for the patient<br>X Not applicable   | Additional national code and description added. This is because some reasonable adjustments may not be linked to a care contact, for example a letter in braille. Therefore it |

| Group/<br>Table                 | Item Name / Level                                  | Item Type | Item Amend<br>Type | Previous   | New  | Change Reason(s)  |
|---------------------------------|--|-----------|--------------------|--|--|---|
|                                 |  |           |                    |  |  | was considered appropriate to include three national codes for this data item.  |
| MHS302MentalHealthDropInContact | CARE CONTACT DATE (MENTAL HEALTH DROP IN CONTACT). | Data Item | Amendment          | The date that a Drop In Contact took place, or was scheduled to take place | The date that a Drop In Contact took place | Slight amendment to the Data Item Description. It was considered that 'scheduled' implies that you may capture DNAs, as this is a Drop in Contact, the contact either took place or it did not. |
| MHS302MentalHealthDropInContact | MENTAL HEALTH DROP IN CONTACT OUTCOME              | Data Item | Amendment          | 06 Emergency Ambulance Service notified                                    | 06 Emergency Service(s) notified           | Removal of the reference to ambulance following discussions with NHS England and NHS Improvement.   |
| MHS516PoliceAssistanceRequest   | POLICE ASSISTANCE ARRIVAL DATE                     | Data Item | Amendment          | M  | R  | We have changed the mandation of the data item POLICE ASSISTANCE ARRIVAL DATE from 'M' to 'R' as it is feasible that police may not arrive or the call may be cancelled                         |

## 2.2.11. Updates in line with recent and wider NHS Data Model and Dictionary developments

| Group/ Table   | Item Name / Level  | Item Type | Item Amend Type | Previous   | New  | Change Reason(s)   |
|----------------|--|-----------|-----------------|--|--|--|
| MHS502WardStay | Hospital Bed Type (Mental Health)<br><br>MENTAL HEALTH ADMITTED PATIENT CLASSIFICATION | Data Item | Amendment       | 10 - Acute adult mental health care<br>11 - Acute older adult mental health care (organic and functional)<br>12 - Psychiatric Intensive Care Unit (acute mental health care)<br>13 - Eating Disorders  | 10 - Acute adult mental health care<br>11 - Acute older adult mental health care (organic and functional)<br>12 - Adult Psychiatric Intensive Care Unit (acute mental health care)<br>13 - Adult Eating Disorders  | The data dictionary is making all national codes make sense in their own right and to allow possible future importing of the code lists all labels must have a valid value. All headings therefore have been removed and to make the description more meaningful the (now) old header is a prefix. |
| MHS502WardStay | Hospital Bed Type (Mental Health)<br><br>MENTAL HEALTH ADMITTED PATIENT CLASSIFICATION | Data Item | Amendment       | 14 - Mother and baby<br>15 - Learning Disabilities<br>16 - Low secure rehabilitation units<br>17 - High dependency rehabilitation<br>18 - Long-term high dependency rehabilitation unit<br>19 - Low secure<br>20 - Medium secure<br>21 - High secure<br>22 - Neuro-psychiatry / Acquired Brain Injury<br>35 - Continuing care unit<br>36 - Community rehabilitation unit<br>37 - Highly specialist inpatient rehabilitation unit<br>23 - General Child and Adolescent Mental Health (CAMHS) inpatient - Child (including High Dependency)<br>24 - "General Child and Adolescent Mental Health (CAMHS) inpatient - Adolescent (including High Dependency)"<br>25 - Eating Disorders inpatient - Adolescent (above 12)<br>26 - Eating Disorders inpatient - Child (12 years and under)<br>27 - Low Secure Mental Illness | 14 - Mother and baby<br>15 - Adult Learning Disabilities<br>17 - Adult High dependency rehabilitation<br>19 - Adult Low secure<br>20 - Adult Medium secure<br>21 - Adult High secure<br>22 - Adult Neuro-psychiatry / Acquired Brain Injury<br>23 - General child and young person mental health inpatient - Child (including High Dependency)<br>24 - General child and young person mental health inpatient - Young person (including High Dependency)<br>25 - Eating Disorders inpatient - Young person (above 12)<br>26 - Eating Disorders inpatient - Child (12 years and under)<br>27 - Child and Young Person Low Secure Mental Illness | The data dictionary is making all national codes make sense in their own right and to allow possible future importing of the code lists all labels must have a valid value. All headings therefore have been removed and to make the description more meaningful the (now) old header is a prefix. |

| Group/ Table                   | Item Name / Level                       | Item Type | Item Amend Type | Previous   | New  | Change Reason(s)   |
|--------------------------------|---|-----------|-----------------|--|--|--|
|                                |   |           |                 | 28 - Medium Secure Mental Illness<br>29 - Child Mental Health inpatient services for the Deaf<br>30 - Learning Disabilities / Autistic Spectrum Disorder inpatient<br>31 - Low Secure Learning Disabilities<br>32 - Medium Secure Learning Disabilities<br>33 - Severe Obsessive Compulsive Disorder and Body Dysmorphic Disorder - Adolescent<br>34 - Psychiatric Intensive Care Unit | 28 - Child and Young Person Medium Secure Mental Illness<br>29 - Child Mental Health inpatient services for the Deaf<br>30 - Child and Young Person Learning Disabilities / Autistic Spectrum Disorder inpatient<br>31 - Child and Young Person Low Secure Learning Disabilities<br>32 - Child and Young Person Medium Secure Learning Disabilities<br>33 - Severe Obsessive Compulsive Disorder and Body Dysmorphic Disorder - Young person<br>34 - Child and Young Person Psychiatric Intensive Care Unit<br>35 - Adult continuing care<br>36 - Adult community rehabilitation<br>37 - Adult highly specialist high dependency rehabilitation<br>38 - Adult longer term high dependency rehabilitation unit<br>39 - Adult mental health inpatient services for the Deaf<br>40 - Adult personality disorder |  |
| MHS503AssignedCareProfessional | TREATMENT FUNCTION CODE (MENTAL HEALTH) | Data Item | Amendment       | 319 - Respite care<br>656 - Clinical Psychology Service<br>700 - Disability Service<br>710 - Adult Mental Health Service<br>711 - Child and Adolescent Psychiatry  | 319 - Respite Care Service<br>656 - Clinical Psychology Service<br>700 - Learning Disability Service   | Renamed codes for more accuracy and clarity in reporting, after feedback from data dictionary. |

| Group/ Table   | Item Name / Level                                     | Item Type | Item Amend Type | Previous   | New   | Change Reason(s)   |
|----------------|---|-----------|-----------------|--|---|--|
|                |   |           |                 | 712 - Forensic psychiatry<br>713 - Medical Psychotherapy Service<br>715 - Old age psychiatry<br>720 - Eating Disorders<br>721 - Addiction Services<br>722 - Liaison Psychiatry<br>723 - Psychiatric Intensive Care<br>724 - Perinatal Mental Health Service<br>725 - Mental Health Recovery and Rehabilitation Service<br>726 - Mental Health Dual Diagnosis Service<br>727 - Dementia Assessment Service<br>730 - Neuropsychiatry Service | 710 - Adult Mental Health Service<br>711 - Child and Adolescent Psychiatry Service<br>712 - Forensic Psychiatry Service<br>713 - Medical Psychotherapy Service<br>715 - Old Age Psychiatry Service<br>720 - Eating Disorders Service<br>721 - Addiction Service<br>722 - Liaison Psychiatry Service<br>723 - Psychiatric Intensive Care Service<br>724 - Perinatal Mental Health Service<br>725 - Mental Health Recovery and Rehabilitation Service<br>726 - Mental Health Dual Diagnosis Service<br>727 - Dementia Assessment Service<br>730 - Neuropsychiatry Service<br>348 - Post COVID-19 Syndrome Service | Intellectual Disability Service reverted back to Learning Disability Service and a new code for COVID-19 added.  |
| MHS502WardStay | INTENDED CLINICAL CARE INTENSITY CODE (MENTAL HEALTH) | Data Item | Amendment       | Mental Illness<br>51 - For intensive care - specially designated ward for patients needing containment and more intensive management (egg Psychiatric Intensive Care Unit (PICU)). This is not to be confused with intensive nursing where a patient may require one-to-one nursing whilst on a standard ward<br>52 - For short stay - patients intended to stay for less than a year  | 51 - Mental Illness intensive care: specially designated ward for Patients needing containment and more intensive management (e.g. Psychiatric Intensive Care Unit (PICU)). This is not to be confused with intensive nursing where Patients may require one to one nursing while on a standard ward  | The data dictionary is making all national codes make sense in their own right and to allow possible future importing of the code lists all labels must have a valid value. All headings therefore have been removed and to make the description more meaningful the |

| Group/ Table | Item Name / Level                   | Item Type | Item Amend Type | Previous  | New  | Change Reason(s)   |
|--------------|-------------------------------------|-----------|-----------------|---|--|--|
|              |                                     |           |                 | <p>53 - For long stay - patients intended to stay a year or more<br/>Learning Disabilities</p> <p>61 - Designated or interim secure unit</p> <p>62 - Patients intending to stay less than a year</p> <p>63 - Patients intending to stay a year or more</p>  | <p>52 - Mental Illness short stay: Patients intended to stay less than a year</p> <p>53 - Mental Illness long stay: Patients intended to stay a year or more</p> <p>61 - Learning Disability Patients in a designated or interim secure unit</p> <p>62 - Learning Disability Patients intending to stay less than a year</p> <p>63 - Learning Disability Patients intending to stay a year or more</p>   | (now) old header is a prefix.  |
| MHS104RTT    | REFERRAL TO TREATMENT PERIOD STATUS | Data Item | Amendment       | <p>The first ACTIVITY in a REFERRAL TO TREATMENT PERIOD where the First Definitive Treatment will be a subsequent ACTIVITY</p> <p>10 - First ACTIVITY - first ACTIVITY in a REFERRAL TO TREATMENT PERIOD</p> <p>11 - Active Monitoring end - first ACTIVITY at the start of a new REFERRAL TO TREATMENT PERIOD following Active Monitoring</p> <p>12 - CONSULTANT or NHS Allied Health Professional Service (Referral To Treatment Measurement) referral - the first ACTIVITY at the start of a new REFERRAL TO TREATMENT PERIOD following a decision to refer directly to the CONSULTANT or NHS Allied Health Professional Service (Referral To Treatment Measurement) for a separate condition</p> <p>Subsequent ACTIVITY during a REFERRAL TO TREATMENT PERIOD</p> | <p>10 - First activity in a Referral to Treatment Period</p> <p>11 - First activity at the start of a new Referral to Treatment Period following Active Monitoring</p> <p>12 - First activity at the start of a new Referral to Treatment Period following a decision to refer directly to the consultant or NHS Allied Health Professional Service (Referral To Treatment Measurement) for a separate condition</p> <p>20 - Subsequent activity during a Referral to Treatment Period - further activities anticipated</p> <p>21 - Subsequent activity by another Health Care Provider following a transfer to another Health Care Provider during a Referral to Treatment Period anticipated</p> | The data dictionary is making all national codes make sense in their own right and to allow possible future importing of the code lists all labels must have a valid value. All headings therefore have been removed and to make the description more meaningful the (now) old header is a prefix. |

| Group/ Table | Item Name / Level | Item Type | Item Amend Type | Previous   | New   | Change Reason(s) |
|--------------|-------------------|-----------|-----------------|--|---|------------------|
|              |                   |           |                 | <p>20 - subsequent ACTIVITY during a REFERRAL TO TREATMENT PERIOD - further ACTIVITIES anticipated</p> <p>21 - transfer to another Health Care Provider - subsequent ACTIVITY by another Health Care Provider during a REFERRAL TO TREATMENT PERIOD anticipated</p> <p>30 - Start of First Definitive Treatment.</p> <p>31 - start of Active Monitoring initiated by the PATIENT</p> <p>32 - start of Active Monitoring initiated by the CARE PROFESSIONAL</p> <p>33 - Did not attend - the PATIENT did not attend the first CARE ACTIVITY after the referral</p> <p>34 - decision not to treat - decision not to treat made or no further contact required</p> <p>35 - PATIENT declined offered treatment</p> <p>36 - PATIENT died before treatment</p> <p>ACTIVITY that is not part of a REFERRAL TO TREATMENT PERIOD</p> <p>90 - after treatment - First Definitive Treatment occurred previously (e.g. admitted as an emergency from A&amp;E or the activity is after the start of treatment)</p> <p>91 - Active Monitoring - CARE ACTIVITY during Active Monitoring</p> <p>92 - not yet referred - not yet referred for treatment, undergoing</p> | <p>30 - End of the Referral to Treatment Period: Start of First Definitive Treatment</p> <p>31 - End of the Referral to Treatment Period: Start of Active Monitoring initiated by the patient</p> <p>32 - End of the Referral to Treatment Period: Start of Active Monitoring initiated by the care professional</p> <p>33 - End of the Referral to Treatment Period: Did not attend - the patient did not attend the first Care activity after the referral</p> <p>34 - End of the Referral to Treatment Period: Decision not to treat - decision not to treat made or no further contact required</p> <p>35 - End of the Referral to Treatment Period: patient declined offered treatment</p> <p>36 - End of the Referral to Treatment Period: patient died before treatment</p> <p>90 - Not part of a Referral to Treatment Period: After treatment - First Definitive Treatment occurred previously (e.g. admitted as an emergency from A&amp;E or the activity is after the start of treatment)</p> <p>91 - Not part of a Referral to Treatment Period: Care activity during Active Monitoring</p> <p>92 - Not part of a Referral to Treatment Period: Not yet referred for treatment,</p> |                  |

| Group/ Table   | Item Name / Level                                      | Item Type | Item Amend Type | Previous  | New   | Change Reason(s)   |
|----------------|--|-----------|-----------------|---|---|--|
|                |  |           |                 | diagnostic tests by GENERAL PRACTITIONER before referral<br>98 - not applicable - ACTIVITY not applicable to REFERRAL TO TREATMENT PERIODS<br>ACTIVITY where the REFERRAL TO TREATMENT PERIOD STATUS is not yet known<br>99 - not yet known   | undergoing diagnostic tests by General Practitioner before referral<br>98 - Not part of a Referral to Treatment Period: activity not applicable to Referral to Treatment Periods<br>99 - Referral to Treatment Period status not yet known  |  |
| MHS101Referral | SOURCE OF REFERRAL FOR MENTAL HEALTH SERVICES DATA SET | Data Item | Amendment       | Primary Health Care<br>A1 - General Medical Practitioner Practice<br>A2 - Health Visitor<br>A3 - Other Primary Health Care<br>A4 - Maternity Service<br>Self Referral<br>B1 - Self<br>B2 - Carer/Relative<br>Local Authority and Other Public Services<br>C1 - Social Services<br>C2 - Education Service / Educational Establishment<br>C3 - Housing Service<br>Employer<br>D1 - Employer<br>D2 - Occupational Health<br>Justice System<br>E1 - Police<br>E2 - Courts<br>E3 - Probation Service<br>E4 - Prison<br>E5 - Court Liaison and Diversion Service<br>E6 - Youth Offending Team<br>Child Health<br>F1 - School Nurse<br>F2 - Hospital-based Paediatrics<br>F3 - Community-based Paediatrics<br>Independent/Voluntary Sector<br>G1 - Independent sector - Medium Secure Inpatients | A1 - Primary Health Care: General Medical Practitioner Practice<br>A2 - Primary Health Care: Health Visitor<br>A3 - Other Primary Health Care<br>A4 - Primary Health Care: Maternity Service<br>B1 - Self-Referral: Self<br>B2 - Self-Referral: Carer/Relative<br>C1 - Local Authority and Other Public Services: Social Services<br>C2 - Local Authority and Other Public Services: Education Service / Educational Establishment<br>C3 - Local Authority and Other Public Services: Housing Service<br>D1 - Employer<br>D2 - Employer: Occupational Health<br>E1 - Justice System: Police<br>E2 - Justice System: Courts<br>E3 - Justice System: Probation Service<br>E4 - Justice System: Prison<br>E5 - Justice System: Court Liaison and Diversion Service | The data dictionary is making all national codes make sense in their own right and to allow possible future importing of the code lists all labels must have a valid value. All headings therefore have been removed and to make the description more meaningful the (now) old header is a prefix. |

| Group/ Table | Item Name / Level | Item Type | Item Amend Type | Previous   | New  | Change Reason(s) |
|--------------|-------------------|-----------|-----------------|--|--|------------------|
|              |                   |           |                 | G2 - Independent Sector - Low Secure Inpatients<br>G3 - Other Independent Sector Mental Health Services<br>G4 - Voluntary Sector Acute Secondary Care<br>H1 - Accident And Emergency Department<br>H2 - Other secondary care specialty<br>Other Mental Health NHS Trust<br>I1 - Temporary transfer from another Mental Health NHS Trust<br>I2 - Permanent transfer from another Mental Health NHS Trust<br>Other<br>M1 - Asylum Services<br>M2 - Telephone or Electronic Access Service<br>M3 - Out of Area Agency<br>M4 - Drug Action Team / Drug Misuse Agency<br>M5 - Jobcentre Plus<br>M6 - Other service or agency<br>M7 - Single Point of Access Service<br>Improving access to psychological therapies<br>N3 - Improving Access to Psychological Therapies Service Internal<br>P1 - Internal Referral | E6 - Justice System: Youth Offending Team<br>F1 - Child Health: School Nurse<br>F2 - Child Health: Hospital-based Paediatrics<br>F3 - Child Health: Community-based Paediatrics<br>G1 - Independent sector - Medium Secure Inpatients<br>G2 - Independent Sector - Low Secure Inpatients<br>G3 - Other Independent Sector Mental Health Services<br>G4 - Voluntary Sector<br>H1 - Acute Secondary Care: Emergency Care Department<br>H2 - Other secondary care specialty<br>H3 – Ambulance Service<br>I1 - Temporary transfer from another Mental Health NHS Trust<br>I2 - Permanent transfer from another Mental Health NHS Trust<br>M1 - Other: Asylum Services<br>M2 - Other: Telephone or Electronic Access Service<br>M3 - Other: Out of Area Agency<br>M4 - Other: Drug Action Team / Drug Misuse Agency<br>M5 - Other: Jobcentre Plus<br>M6 - Other SERVICE or agency<br>M7 - Other: Single Point of Access Service |                  |

| Group/ Table                  | Item Name / Level                                      | Item Type | Item Amend Type | Previous  | New   | Change Reason(s)  |
|-------------------------------|--|-----------|-----------------|---|---|---|
|                               |  |           |                 |   | N3 - Improving Access to Psychological Therapies Service<br>P1 - Internal Referral  |   |
| MHS101Referral                | SOURCE OF REFERRAL FOR MENTAL HEALTH SERVICES DATA SET | Data Item | Amendment       | H1 - Acute Secondary Care: Accident and Emergency   | H1 - Acute Secondary Care: Emergency Care Department  | National Codes changed in Data Dictionary, changed to reflect                                 |
| MHS101Referral                | SOURCE OF REFERRAL FOR MENTAL HEALTH SERVICES DATA SET | Data Item | Amendment       |   | H3 – Ambulance Service  | List amended for more clarity   |
| MHS106Discharge PlanAgreement | DISCHARGE PLAN AGREED BY                               | Data Item | Amendment       | DISCHARGE PLAN AGREED BY  | DISCHARGE PLAN CONTENT AGREED BY  | Data dictionary have updated the data item name for clarity                                   |
| MHS106Discharge PlanAgreement | DISCHARGE PLAN AGREED DATE                             | Data Item | Amendment       | DISCHARGE PLAN CONTENT AGREED DATE  | DISCHARGE PLAN CONTENT AGREED BY  | Data dictionary have updated the data item name for clarity                                   |
| MHS106Discharge PlanAgreement | DISCHARGE PLAN AGREED TIME                             | Data Item | Amendment       | DISCHARGE PLAN CONTENT AGREED TIME  | DISCHARGE PLAN CONTENT AGREED BY  | Data dictionary have updated the data item name for clarity                                   |
| MHS901StaffDetails            | MAIN SPECIALTY CODE (MENTAL HEALTH)                    | Data Item | Amendment       | 600 - General Medical Practice<br>700 - Learning Disability<br>710 - Adult Mental illness<br>711 - Child and Adolescent Psychiatry<br>712 - Forensic psychiatry<br>713 - Psychotherapy<br>715 - Old age psychiatry<br>950 - Nursing Episode<br>960 - Allied Health Professional Episode | 600 - General Medical Practice<br>700 - Intellectual Disability<br>710 - Adult Mental illness<br>711 - Child and Adolescent Psychiatry<br>712 - Forensic Psychiatry<br>713 - Psychotherapy<br>715 - Old age psychiatry<br>950 - Nursing<br>960 - Allied Health Professional | Renamed codes for more accuracy and clarity in reporting, after feedback from data dictionary |
| MHS501HospProv Spell          | SOURCE OF ADMISSION CODE                               | Data Item | Amendment       | SOURCE OF ADMISSION CODE (HOSPITAL PROVIDER SPELL)  | ADMISSION SOURCE (MENTAL HEALTH)  | Data item renamed as it clashed with other data sets  |

| Group/ Table         | Item Name / Level  | Item Type | Item Amend Type | Previous  | New  | Change Reason(s)   |
|----------------------|--|-----------|-----------------|---|--|--|
|                      | (HOSPITAL PROVIDER SPELL)                                    |           |                 |   | HOSPITAL PROVIDER SPELL)   |  |
| MHS501HospProv Spell | ADMISSION METHOD CODE (HOSPITAL PROVIDER SPELL)              | Data Item | Amendment       | ADMISSION METHOD CODE (HOSPITAL PROVIDER SPELL)   | METHOD OF ADMISSION (MENTAL HEALTH HOSPITAL PROVIDER SPELL)  | Data item renamed as it clashed with other data sets   |
| MHS501HospProv Spell | PLANNED DISCHARGE DESTINATION CODE (HOSPITAL PROVIDER SPELL) | Data Item | Amendment       | PLANNED DISCHARGE DESTINATION CODE (HOSPITAL PROVIDER SPELL)  | PLANNED DESTINATION OF DISCHARGE (HOSPITAL PROVIDER SPELL)   | Data item renamed as it clashed with other data sets   |
| MHS501HospProv Spell | DISCHARGE METHOD CODE (HOSPITAL PROVIDER SPELL)              | Data Item | Amendment       | DISCHARGE METHOD CODE (HOSPITAL PROVIDER SPELL)   | METHOD OF DISCHARGE (MENTAL HEALTH HOSPITAL PROVIDER SPELL)  | Data item renamed as it clashed with other data sets   |
| MHS501HospProv Spell | DISCHARGE DESTINATION CODE (HOSPITAL PROVIDER SPELL)         | Data Item | Amendment       | DISCHARGE DESTINATION CODE (HOSPITAL PROVIDER SPELL)  | DESTINATION OF DISCHARGE (HOSPITAL PROVIDER SPELL)   | Data item renamed as it clashed with other data sets   |
| MHS501HospProv Spell | METHOD OF ADMISSION (MENTAL HEALTH HOSPITAL PROVIDER SPELL)  | Data Item | Amendment       | 2a - Emergency Admission: Accident and Emergency Department of another provider where the patient had not been admitted<br>21 - Emergency Admission: Accident and emergency or dental casualty department of the Health Care Provider | 2a - Emergency Admission: Emergency Care Department of another provider where the patient had not been admitted<br>21 - Emergency Admission: Emergency Care Department or dental casualty department of the Health Care Provider | National Codes changed in Data Dictionary, changed to reflect  |
| MHS501HospProv Spell | METHOD OF ADMISSION (MENTAL HEALTH                           | Data Item | Amendment       | Elective Admission<br>11 - Waiting list<br>12 - Booked<br>13 - Planned  | 11 - Elective Admission: Waiting list<br>12 - Elective Admission: Booked   | The data dictionary is making all national codes make sense in their own right and to allow possible |

| Group/ Table | Item Name / Level        | Item Type | Item Amend Type | Previous   | New  | Change Reason(s)  |
|--------------|--------------------------|-----------|-----------------|--|--|---|
|              | HOSPITAL PROVIDER SPELL) |           |                 | Emergency Admission<br>21 - Accident and emergency, or dental casualty department of the Health Care Provider<br>22 - General Practitioner after a request has been made direct to the Health Care Provider (i.e. not through a bed bureau) by a General Practitioner or deputy<br>23 - Bed Bureau<br>24 - Consultant clinic of this or another Health Care Provider<br>25 - Admission via Mental Health Crisis Resolution Team<br>2A - Accident and Emergency Department of another provider where the PATIENT had not been admitted<br>2B - Transfer of an admitted PATIENT from another Hospital Provider in an emergency<br>2D - Other emergency admission<br>Other Admission<br>81 - Transfer of any admitted patient from other hospital provider other than in an emergency. This does not include admissions to high security psychiatric hospitals<br>98 - Not applicable<br>99 - Not Known: a validation error | 13 - Elective Admission: Planned<br>21 - Emergency Admission: Accident and emergency or dental casualty department of the Health Care Provider<br>22 - Emergency Admission: General Practitioner: after a request for immediate admission has been made direct to a Hospital Provider, i.e. not through a Bed bureau, by a General Practitioner or deputy<br>23 - Emergency Admission: Bed bureau<br>24 - Emergency Admission: Consultant Clinic, of this or another Health Care Provider<br>25 - Emergency Admission: Admission via Mental Health Crisis Resolution Team<br>2A - Emergency Admission: Accident and Emergency Department of another provider where the patient had not been admitted<br>2B - Emergency Admission: Transfer of an admitted patient from another Hospital Provider in an emergency<br>2D - Emergency Admission: Other emergency admission<br>81 - Other Admission: Transfer of any admitted patient from other Hospital Provider other than in an emergency<br>98 - Not applicable<br>99 - Not Known | future importing of the code lists all labels must have a valid value. All headings therefore have been removed and to make the description more meaningful the (now) old header is a prefix. |

| Group/ Table         | Item Name / Level   | Item Type | Item Amend Type | Previous  | New  | Change Reason(s)  |
|----------------------|---|-----------|-----------------|---|--|---|
| MHS501HospProv Spell |   |           | Amendment       | Hospital Provider Spell Number                            | Hospital Provider Spell Identifier                           | In line with Data Dictionary change all references to Hospital Provider Spell Number have been replaced with Hospital Provider Spell Identifier |
| MHS201CareContact    | ACTIVITY LOCATION TYPE CODE                                 | Data Item | Amendment       | E04 - Accident and Emergency or Minor Injuries Department | E04 - Emergency Care Department or Minor Injuries Department | In line with Data Dictionary change notice 1803 this item has been renamed  |
| MHS301GroupSession   | ACTIVITY LOCATION TYPE CODE                                 | Data Item | Amendment       | E04 - Accident and Emergency or Minor Injuries Department | E04 - Emergency Care Department or Minor Injuries Department | In line with Data Dictionary change notice 1803 this item has been renamed  |
| MHS608AnonSelfAssess | ACTIVITY LOCATION TYPE CODE                                 | Data Item | Amendment       | E04 - Accident and Emergency or Minor Injuries Department | E04 - Emergency Care Department or Minor Injuries Department | In line with Data Dictionary change notice 1803 this item has been renamed  |
| MHS501HospProv Spell | ADMISSION SOURCE (MENTAL HEALTH HOSPITAL PROVIDER SPELL)    | Data Item | Amendment       | 99 - Not Known: a validation error                        | 99 - Not Known   | In line with Data Dictionary change this item code has been renamed   |
| MHS501HospProv Spell | METHOD OF ADMISSION (MENTAL HEALTH HOSPITAL PROVIDER SPELL) | Data Item | Amendment       | 99 - Not Known: a validation error                        | 99 - Not Known   | In line with Data Dictionary change this item code has been renamed   |
| MHS201CareContact    | ADMINISTRATIVE CATEGORY CODE                                | Data Item | Amendment       | 99 - Not Known: a validation error                        | 99 - Not Known   | In line with Data Dictionary change this item code has been renamed   |
| MHS501HospProv Spell | METHOD OF DISCHARGE (MENTAL HEALTH HOSPITAL                 | Data Item | Amendment       | 9 - Not Known: a validation error                         | 9 - Not Known  | In line with Data Dictionary change this item code has been renamed   |

| Group/ Table   | Item Name / Level                   | Item Type | Item Amend Type | Previous                       | New                                | Change Reason(s)  |
|--|-------------------------------------|-----------|-----------------|--------------------------------|------------------------------------|---|
|  | PROVIDER SPELL)                     |           |                 |                                |                                    |   |
| MHS901StaffDetails   | PROFESSIONAL REGISTRATION BODY CODE | Data Item | Amendment       |                                | 18 - Social Work England           | In line with Data Dictionary change this item code has been added   |
| MHS501HospProv Spell<br>MHS502WardStay<br>MHS503AssignedCareProf<br>MHS504DelayedDischarge<br>MHS505Restrictive Intervention<br>MHS506Assault<br>MHS507SelfHarm<br>MHS509HomeLeave<br>MHS510LeaveOfAbsence<br>MHS511AbsenceWithoutLeave<br>MHS512HospSpell Comm<br>MHS513Substance Misuse<br>MHS514TrialLeave<br>MHS515Restrictive InterventType<br>MHS516PoliceAssistanceReques | HOSPITAL PROVIDER SPELL NUMBER      | Data Item | Amendment       | HOSPITAL PROVIDER SPELL NUMBER | HOSPITAL PROVIDER SPELL IDENTIFIER | In line with Data Dictionary change all references to Hospital Provider Spell Number have been replaced with Hospital Provider Spell Identifier |
| MHS501HospProv Spell<br>MHS502WardStay<br>MHS503AssignedCareProf<br>MHS504DelayedDischarge<br>MHS505Restrictive Intervention   | HOSPITAL PROVIDER SPELL NUMBER      | Data Item | Amendment       | HospProvSpellNum               | HospProvSpellID                    | In line with Data Dictionary change all references to Hospital Provider Spell Number have been replaced with Hospital Provider Spell Identifier |

| Group/ Table  | Item Name / Level                    | Item Type | Item Amend Type | Previous                             | New  | Change Reason(s)  |
|---|--------------------------------------|-----------|-----------------|--------------------------------------|--|---|
| MHS506Assault<br>MHS507SelfHarm<br>MHS509HomeLeave<br>MHS510LeaveOfAbsence<br>MHS511AbsenceWithoutLeave<br>MHS512HospSpellComm<br>MHS513SubstanceMisuse<br>MHS514TrialLeave<br>MHS515RestrictiveInterventType<br>MHS516PoliceAssistanceReques |                                      |           |                 |                                      |  |   |
| MHS001MPI   | NHS NUMBER STATUS INDICATOR CODE     | Data Item | Amendment       | NUMBER STATUS INDICATOR CODE         | NHS NUMBER STATUS INDICATOR CODE (MENTAL HEALTH AND MATERNITY) | Data dictionary change request, reference 1768                                  |
| MHS001MPI   | GENDER IDENTITY CODE (MENTAL HEALTH) | Data Item | Amendment       | GENDER IDENTITY CODE (MENTAL HEALTH) | GENDER IDENTITY CODE   | Data dictionary change request, reference 1768                                  |
| MHS005PatInd  | REASONABLE ADJUSTMENT INDICATOR      | Data Item | Amendment       | REASONABLE ADJUSTMENT INDICATOR      | REASONABLE ADJUSTMENT REQUIRED INDICATOR                       | Data dictionary change request, reference 1768                                  |
| MHS005PatInd  | LOOKED AFTER CHILD LEGAL STATUS      | Data Item | Addition        |                                      | LOOKED AFTER CHILD LEGAL STATUS                                | Requirement to include legal status, helps to determine parental responsibility |
| MHS005PatInd  | EDUCATIONAL ASSESSMENT OUTCOME       | Data Item | Addition        |                                      | EDUCATIONAL ASSESSMENT OUTCOME                                 | EDUCATIONAL ASSESSMENT OUTCOME added to bring into alignment with CSDS.         |

| Group/ Table                  | Item Name / Level                                   | Item Type | Item Amend Type | Previous  | New   | Change Reason(s)  |
|-------------------------------|---|-----------|-----------------|---|---|---|
| MHS009CarePlanAgreement       | CARE PLAN AGREED BY                                 | Data Item | Amendment       | CARE PLAN AGREED BY                                 | CARE PLAN CONTENT AGREED BY                             | Data dictionary have updated the data item name for clarity |
| MHS009CarePlanAgreement       | CARE PLAN AGREED DATE                               | Data Item | Amendment       | CARE PLAN AGREED DATE                               | CARE PLAN CONTENT AGREED DATE                           | Data dictionary have updated the data item name for clarity |
| MHS009CarePlanAgreement       | CARE PLAN AGREED TIME                               | Data Item | Amendment       | CARE PLAN AGREED TIME                               | CARE PLAN CONTENT AGREED TIME                           | Data dictionary have updated the data item name for clarity |
| MHS009CarePlanAgreement       | FAMILY INVOLVED IN CARE PLAN DISCUSSIONS            | Data Item | Amendment       | FAMILY INVOLVED IN CARE PLAN DISCUSSIONS            | FAMILY INVOLVED IN CARE PLAN INDICATOR                  | Data dictionary change request, reference 1768              |
| MHS009CarePlanAgreement       | FAMILY NOT INVOLVED IN CARE PLAN DISCUSSIONS REASON | Data Item | Amendment       | FAMILY NOT INVOLVED IN CARE PLAN DISCUSSIONS REASON | FAMILY NOT INVOLVED IN CARE PLAN REASON                 | Data dictionary change request, reference 1768              |
| MHS010AssTechToSupportDisTyp  | PRESCRIPTION DATE (ASSISTIVE TECHNOLOGY)            | Data Item | Amendment       | PRESCRIPTION DATE (ASSISTIVE TECHNOLOGY)            | PRESCRIPTION TIMESTAMP (ASSISTIVE TECHNOLOGY)           | Data dictionary change request, reference 1768              |
| MHS011SocPerCircumstances     | SOCIAL AND PERSONAL CIRCUMSTANCE RECORDED DATE      | Data Item | Amendment       | SOCIAL AND PERSONAL CIRCUMSTANCE RECORDED DATE      | SOCIAL AND PERSONAL CIRCUMSTANCE RECORDED TIMESTAMP     | Data dictionary change request, reference 1768              |
| MHS012OverseasVisitorChargCat | OVERSEAS VISITOR CHARGING CATEGORY APPLICABLE DATE  | Data Item | Amendment       | OVERSEAS VISITOR CHARGING CATEGORY APPLICABLE DATE  | OVERSEAS VISITOR CHARGING CATEGORY APPLICABLE FROM DATE | Data dictionary change request, reference 1768              |
| MHS012OverseasVisitorChargCat | OVERSEAS VISITOR CHARGING CATEGORY END DATE         | Data Item | Amendment       | OVERSEAS VISITOR CHARGING CATEGORY END DATE         | OVERSEAS VISITOR CHARGING CATEGORY APPLICABLE END DATE  | Data dictionary change request, reference 1768              |

| Group/ Table         | Item Name / Level  | Item Type  | Item Amend Type | Previous   | New  | Change Reason(s)                               |
|----------------------|--|------------|-----------------|--|--|--|
| MHS013CurrencyModel  |  | Group Name | Amendment       | MHS013CurrencyModel  | MHS013MHCurrencyModel                                    | Data dictionary change request, reference 1768 |
| MHS013CurrencyModel  | CURRENCY GROUPING TYPE (SNOMED CT)   | Data Item  | Amendment       | CURRENCY GROUPING TYPE (SNOMED CT)   | MENTAL HEALTH RESOURCE GROUP TYPE (SNOMED CT)            | Data dictionary change request, reference 1768 |
| MHS013CurrencyModel  | CURRENCY GROUP START DATE  | Data Item  | Amendment       | CURRENCY GROUP START DATE  | START DATE (MENTAL HEALTH RESOURCE GROUP)                | Data dictionary change request, reference 1768 |
| MHS013CurrencyModel  | CURRENCY GROUP END DATE  | Data Item  | Amendment       | CURRENCY GROUP END DATE  | END DATE (MENTAL HEALTH RESOURCE GROUP)                  | Data dictionary change request, reference 1768 |
| MHS101Referral       | SOURCE OF REFERRAL FOR MENTAL HEALTH                                       | Data Item  | Amendment       | SOURCE OF REFERRAL FOR MENTAL HEALTH                                       | SOURCE OF REFERRAL FOR MENTAL HEALTH SERVICES DATA SET   | Data dictionary change request, reference 1768 |
| MHS101Referral       | REFERRING CARE PROFESSIONAL STAFF GROUP (MENTAL HEALTH AND COMMUNITY CARE) | Data Item  | Amendment       | REFERRING CARE PROFESSIONAL STAFF GROUP (MENTAL HEALTH AND COMMUNITY CARE) | REFERRING CARE PROFESSIONAL STAFF GROUP (MENTAL HEALTH)  | Data dictionary change request, reference 1768 |
| MHS101Referral       | DECISION TO TREAT DATE   | Data Item  | Amendment       | DECISION TO TREAT DATE   | DECISION TO TREAT DATE (MENTAL HEALTH HOME TREATMENT)    | Data dictionary change request, reference 1768 |
| MHS101Referral       | DECISION TO TREAT TIME   | Data Item  | Amendment       | DECISION TO TREAT TIME   | DECISION TO TREAT TIME (MENTAL HEALTH HOME TREATMENT)    | Data dictionary change request, reference 1768 |
| MHS104RTT            | WAITING TIME MEASUREMENT TYPE  | Data Item  | Amendment       | WAITING TIME MEASUREMENT TYPE  | WAITING TIME MEASUREMENT TYPE (MENTAL HEALTH)            | Data dictionary change request, reference 1768 |
| MHS105OnwardReferral | ONWARD REFERRAL REASON   | Data Item  | Amendment       | ONWARD REFERRAL REASON   | ONWARD REFERRAL REASON (MENTAL HEALTH SERVICES DATA SET) | Data dictionary change request, reference 1768 |
| MHS105OnwardReferral | CODED PROCEDURE AND  | Data Item  | Amendment       | CODED PROCEDURE AND PROCEDURE STATUS (SNOMED CT)                           | CODED REFERRAL PROCEDURE AND                             | Data dictionary change request, reference 1768 |

| Group/ Table           | Item Name / Level  | Item Type | Item Amend Type | Previous  | New   | Change Reason(s)                               |
|------------------------|--|-----------|-----------------|---|---|--|
|                        | PROCEDURE STATUS (SNOMED CT)   |           |                 |   | PROCEDURE STATUS (SNOMED CT)  |  |
| MHS201CareContact      | OFFER STATUS (COMMUNITY PERINATAL MENTAL HEALTH PARTNER ASSESSMENT)  | Data Item | Amendment       | OFFER STATUS (COMMUNITY PERINATAL MENTAL HEALTH PARTNER ASSESSMENT) | COMMUNITY PERINATAL MENTAL HEALTH PARTNER ASSESSMENT OFFER INDICATOR  | Data dictionary change request, reference 1768 |
| MHS201CareContact      | COMMUNITY PERINATAL MENTAL HEALTH PARTNER ASSESSMENT OFFER INDICATOR | Data Item | Amendment       | Y - Yes an offer was made<br>N - No an offer wasn't made            | Y - Yes - a Community Perinatal Mental Health Partner Assessment has been offered<br>N - No - a Community Perinatal Mental Health Partner Assessment has not been offered | Data dictionary change request, reference 1768 |
| MHS201CareContact      | REASONABLE ADJUSTMENT MADE   | Data Item | Amendment       | REASONABLE ADJUSTMENT MADE  | REASONABLE ADJUSTMENT MADE INDICATOR  | Data dictionary change request, reference 1768 |
| MHS202CareActivity     | FINDING SCHEME IN USE  | Data Item | Amendment       | FINDING SCHEME IN USE   | FINDING SCHEME IN USE (MENTAL HEALTH)   | Data dictionary change request, reference 1768 |
| MHS203OtherAttended    | REASON PATIENT DOES NOT HAVE AN IMCA                                 | Data Item | Amendment       | REASON PATIENT DOES NOT HAVE AN IMCA                                | REASON PATIENT DOES NOT HAVE INDEPENDENT MENTAL CAPACITY ADVOCATE   | Data dictionary change request, reference 1768 |
| MHS203OtherAttended    | REASON PATIENT DOES NOT HAVE AN IMHA                                 | Data Item | Amendment       | REASON PATIENT DOES NOT HAVE AN IMHA                                | REASON PATIENT DOES NOT HAVE INDEPENDENT MENTAL HEALTH ADVOCATE   | Data dictionary change request, reference 1768 |
| MHS204IndirectActivity | CODED PROCEDURE AND PROCEDURE  | Data Item | Amendment       | CODED PROCEDURE AND PROCEDURE STATUS (SNOMED CT)                    | CODED INDIRECT ACTIVITY PROCEDURE AND PROCEDURE STATUS (SNOMED CT)  | Data dictionary change request, reference 1768 |

| Group/ Table               | Item Name / Level  | Item Type | Item Amend Type | Previous   | New   | Change Reason(s)                               |
|----------------------------|--|-----------|-----------------|--|---|--|
|                            | STATUS (SNOMED CT)   |           |                 |  |   |  |
| MHS204IndirectAct<br>ivity | FINDING SCHEME IN USE  | Data Item | Amendment       | FINDING SCHEME IN USE  | FINDING SCHEME IN USE (MENTAL HEALTH)                       | Data dictionary change request, reference 1768 |
| MHS501HospProv<br>Spell    | ADMISSION SOURCE CODE (MENTAL HEALTH HOSPITAL PROVIDER SPELL)    | Data Item | Amendment       | ADMISSION SOURCE CODE (MENTAL HEALTH HOSPITAL PROVIDER SPELL)    | ADMISSION SOURCE (MENTAL HEALTH HOSPITAL PROVIDER SPELL)    | Data dictionary change request, reference 1768 |
| MHS501HospProv<br>Spell    | METHOD OF ADMISSION CODE (MENTAL HEALTH HOSPITAL PROVIDER SPELL) | Data Item | Amendment       | METHOD OF ADMISSION CODE (MENTAL HEALTH HOSPITAL PROVIDER SPELL) | METHOD OF ADMISSION (MENTAL HEALTH HOSPITAL PROVIDER SPELL) | Data dictionary change request, reference 1768 |
| MHS501HospProv<br>Spell    | PLANNED DESTINATION OF DISCHARGE CODE (HOSPITAL PROVIDER SPELL)  | Data Item | Amendment       | PLANNED DESTINATION OF DISCHARGE CODE (HOSPITAL PROVIDER SPELL)  | PLANNED DESTINATION OF DISCHARGE (HOSPITAL PROVIDER SPELL)  | Data dictionary change request, reference 1768 |
| MHS501HospProv<br>Spell    | METHOD OF DISCHARGE CODE (MENTAL HEALTH HOSPITAL PROVIDER SPELL) | Data Item | Amendment       | METHOD OF DISCHARGE CODE (MENTAL HEALTH HOSPITAL PROVIDER SPELL) | METHOD OF DISCHARGE (MENTAL HEALTH HOSPITAL PROVIDER SPELL) | Data dictionary change request, reference 1768 |
| MHS501HospProv<br>Spell    | DESTINATION OF DISCHARGE CODE (HOSPITAL PROVIDER SPELL)          | Data Item | Amendment       | DESTINATION OF DISCHARGE CODE (HOSPITAL PROVIDER SPELL)          | DESTINATION OF DISCHARGE (HOSPITAL PROVIDER SPELL)          | Data dictionary change request, reference 1768 |

| Group/ Table                    | Item Name / Level               | Item Type | Item Amend Type | Previous                        | New   | Change Reason(s)                               |
|---------------------------------|---------------------------------|-----------|-----------------|---------------------------------|---|--|
|                                 | PROVIDER SPELL)                 |           |                 |                                 |   |  |
| MHS501HospProv Spell            | TRANSFORMING CARE TYPE          | Data Item | Amendment       | TRANSFORMING CARE TYPE          | TRANSFORMING CARE CATEGORY                  | Data dictionary change request, reference 1768 |
| MHS502WardStay                  | SEX OF PATIENTS CODE            | Data Item | Amendment       | SEX OF PATIENTS CODE            | SEX OF PATIENTS CODE (MENTAL HEALTH)        | Data dictionary change request, reference 1768 |
| MHS601MedHistPrevDiag           | DIAGNOSIS SCHEME IN USE         | Data Item | Amendment       | DIAGNOSIS SCHEME IN USE         | DIAGNOSIS SCHEME IN USE (MENTAL HEALTH)     | Data dictionary change request, reference 1768 |
| MHS601MedHistPrevDiag           | DIAGNOSIS DATE                  | Data Item | Amendment       | DIAGNOSIS DATE                  | CODED DIAGNOSIS TIMESTAMP                   | Data dictionary change request, reference 1768 |
| MHS601MedHistPrevDiag           | LONG TERM CONDITION INDICATOR   | Data Item | Amendment       | LONG TERM CONDITION INDICATOR   | MENTAL HEALTH LONG TERM CONDITION INDICATOR | Data dictionary change request, reference 1768 |
| MHS603ProvDiag                  | DIAGNOSIS SCHEME IN USE         | Data Item | Amendment       | DIAGNOSIS SCHEME IN USE         | DIAGNOSIS SCHEME IN USE (MENTAL HEALTH)     | Data dictionary change request, reference 1768 |
| MHS603ProvDiag                  | PROVISIONAL DIAGNOSIS DATE      | Data Item | Amendment       | PROVISIONAL DIAGNOSIS DATE      | CODED PROVISIONAL DIAGNOSIS TIMESTAMP       | Data dictionary change request, reference 1768 |
| MHS604PrimDiag                  | DIAGNOSIS SCHEME IN USE         | Data Item | Amendment       | DIAGNOSIS SCHEME IN USE         | DIAGNOSIS SCHEME IN USE (MENTAL HEALTH)     | Data dictionary change request, reference 1768 |
| MHS604PrimDiag                  | DIAGNOSIS DATE                  | Data Item | Amendment       | DIAGNOSIS DATE                  | CODED DIAGNOSIS TIMESTAMP                   | Data dictionary change request, reference 1768 |
| MHS605SecDiag                   | DIAGNOSIS SCHEME IN USE         | Data Item | Amendment       | DIAGNOSIS SCHEME IN USE         | DIAGNOSIS SCHEME IN USE (MENTAL HEALTH)     | Data dictionary change request, reference 1768 |
| MHS605SecDiag                   | DIAGNOSIS DATE                  | Data Item | Amendment       | DIAGNOSIS DATE                  | CODED DIAGNOSIS TIMESTAMP                   | Data dictionary change request, reference 1768 |
| MHS606CodedScoreAssessmentRefer | ASSESSMENT TOOL COMPLETION DATE | Data Item | Amendment       | ASSESSMENT TOOL COMPLETION DATE | ASSESSMENT TOOL COMPLETION TIMESTAMP        | Data dictionary change request, reference 1768 |
| MHS608AnonSelfAssess            | ASSESSMENT TOOL COMPLETION DATE | Data Item | Amendment       | ASSESSMENT TOOL COMPLETION DATE | ASSESSMENT TOOL COMPLETION TIMESTAMP        | Data dictionary change request, reference 1768 |

| Group/ Table         | Item Name / Level  | Item Type | Item Amend Type | Previous  | New   | Change Reason(s)                               |
|----------------------|--|-----------|-----------------|---|---|--|
| MHS501HospProv Spell | ADMISSION SOURCE (MENTAL HEALTH HOSPITAL PROVIDER SPELL) | Data Item | Amendment       | <p>19 - Usual place of residence unless listed below, for example, a private dwelling whether owner occupied or owned by Local Authority, housing association or other landlord. This includes wardened accommodation but not residential accommodation where health care is provided. It also includes PATIENTS with no fixed abode.</p> <p>29 - Temporary place of residence when usually resident elsewhere (e.g. hotels, residential Educational Establishments)</p> <p>37 - Court</p> <p>40 - Penal establishment</p> <p>42 - Police Station / Police Custody Suite</p> <p>49 - NHS other Hospital Provider - high security psychiatric accommodation in an NHS Hospital Provider (NHS Trust or NHS Foundation Trust)</p> <p>51 - NHS other Hospital Provider - WARD for general PATIENTS or the younger physically disabled or Emergency Care Department</p> <p>52 - NHS other Hospital Provider - WARD for maternity PATIENTS or Neonates</p> <p>53 - NHS other Hospital Provider - WARD for PATIENTS who are mentally ill or have Learning Disabilities</p> <p>54 - NHS run Care Home</p> <p>65 - Local Authority residential accommodation where care is provided</p> <p>66 - Local Authority foster care</p> <p>85 - Non-NHS (other than Local Authority) run Care Home</p> | <p>19 - Usual place of residence unless listed below, for example, a private dwelling whether owner occupied or owned by Local Authority, housing association or other landlord. This includes wardened accommodation but not residential accommodation where health care is provided. It also includes PATIENTS with no fixed abode.</p> <p>29 - Temporary place of residence when usually resident elsewhere (e.g. hotels, residential Educational Establishments)</p> <p>37 - Court</p> <p>40 - Penal establishment</p> <p>42 - Police Station / Police Custody Suite</p> <p>49 - NHS other Hospital Provider - high security psychiatric accommodation in an NHS Hospital Provider (NHS Trust or NHS Foundation Trust)</p> <p>51 - NHS other Hospital Provider - WARD for general PATIENTS or the younger physically disabled or Emergency Care Department</p> <p>52 - NHS other Hospital Provider - WARD for maternity PATIENTS or Neonates</p> <p>53 - NHS other Hospital Provider - WARD for PATIENTS who are mentally ill or have Learning Disabilities</p> | Data dictionary change request, reference 1768 |

| Group/ Table            | Item Name / Level  | Item Type | Item Amend Type | Previous  | New   | Change Reason(s)                               |
|-------------------------|--|-----------|-----------------|---|---|--|
|                         |  |           |                 | 87 - Non NHS run hospital<br>88 - Non-NHS (other than Local Authority) run Hospice<br>98 - Not applicable<br>99 - Not Known                         | 55 - Care Home With Nursing<br>56 - Care Home Without Nursing<br>66 - Local Authority foster care<br>87 - Independent Sector Healthcare Provider run hospital<br>88 - Hospice<br>98 - Not applicable<br>99 - Not Known  |  |
| MHS201CareContact       | COMMUNITY PERINATAL MENTAL HEALTH PARTNER ASSESSMENT OFFER INDICATOR | Data Item | Amendment       | Y - Yes an offer was made<br>N - No an offer wasn't made  | Y - Yes - a Community Perinatal Mental Health Partner Assessment has been offered<br>N - No - a Community Perinatal Mental Health Partner Assessment has not been offered   | Data dictionary change request, reference 1768 |
| MHS201CareContact       | REASONABLE ADJUSTMENT MADE INDICATOR                                 | Data Item | Amendment       | Y - Yes<br>N - No   | Y - Yes - a Reasonable Adjustment was made for the patient<br>N - No - a Reasonable Adjustment was not made for the patient   | Data dictionary change request, reference 1768 |
| MHS009CarePlanAgreement | FAMILY INVOLVED IN CARE PLAN INDICATOR                               | Data Item | Amendment       | Y - Yes<br>N - No<br>9 - Not Known if patient's family is currently involved in the patient's care plan   | Y - Yes - a member of the patient's family is currently involved in the patient's care plan<br>N - No - a member of the patient's family is not currently involved in the patient's care plan<br>9 - Not Known if patient's family is currently involved in the patient's care plan | Data dictionary change request, reference 1768 |
| MHS601MedHistPrevDiag   | MENTAL HEALTH LONG TERM CONDITION INDICATOR                          | Data Item | Amendment       | Y - Yes - clinical diagnosis from a specific classification or clinical terminology is a long term condition.<br>N - No - clinical diagnosis from a | Y - Yes - the patient diagnosis for a mental health patient is a Mental Health Long Term Condition<br>N - No - the patient diagnosis  | Data dictionary change request, reference 1768 |

| Group/ Table        | Item Name / Level   | Item Type | Item Amend Type | Previous  | New   | Change Reason(s)                               |
|---------------------|---|-----------|-----------------|---|---|--|
|                     |   |           |                 | specific classification or clinical terminology is not a long term condition.   | for a mental health patient is not a Mental Health Long Term Condition  |  |
| MHS005PatInd        | REASONABLE ADJUSTMENT REQUIRED INDICATOR                          | Data Item | Amendment       | Y - Yes<br>N - No   | Y - Yes - the patient requires a Reasonable Adjustment<br>N - No - the patient does not require a Reasonable Adjustment   | Data dictionary change request, reference 1768 |
| MHS203OtherAttended | REASON PATIENT DOES NOT HAVE INDEPENDENT MENTAL CAPACITY ADVOCATE | Data Item | Amendment       | 01 - Patient has chosen not to have an Independent Mental Capacity Advocate<br>02 - No locally commissioned IMCA available, the patient is on a waiting list and no further action taken<br>03 - No locally commissioned IMCA available, the patient is on a waiting list and an alternative service is being sought<br>04 - No locally commissioned IMCA available, the patient is not on a waiting list and no further action taken<br>05 - No locally commissioned IMCA available, the patient is not on a waiting list and an alternative service is being sought<br>98 - Other (not listed)<br>99 - Not applicable: no requirement for an IMCA | 01 - Patient has chosen not to have an Independent Mental Capacity Advocate<br>02 - No locally commissioned Independent Mental Capacity Advocate available, the patient is on a waiting list and no further action taken<br>03 - No locally commissioned Independent Mental Capacity Advocate available, the patient is on a waiting list and an alternative service is being sought<br>04 - No locally commissioned Independent Mental Capacity Advocate available, the patient is not on a waiting list and no further action taken<br>05 - No locally commissioned Independent Mental Capacity Advocate available, the patient is not on a waiting list and an alternative service is being sought<br>98 - Other (not listed)<br>99 - Not applicable: no requirement for an Independent Mental Capacity Advocate | Data dictionary change request, reference 1768 |
| MHS203OtherAttended | REASON PATIENT DOES NOT HAVE                                      | Data Item | Amendment       | 01 - Patient has chosen not to have an Independent Mental Health Advocate<br>02 - No locally commissioned IMHA  | 01 - Patient has chosen not to have an Independent Mental Health Advocate<br>02 - No locally commissioned   | Data dictionary change request, reference 1768 |

| Group/ Table         | Item Name / Level                  | Item Type | Item Amend Type | Previous  | New  | Change Reason(s)  |
|----------------------|------------------------------------|-----------|-----------------|---|--|---|
|                      | INDEPENDENT MENTAL HEALTH ADVOCATE |           |                 | <p>available, the patient is on a waiting list and no further action taken</p> <p>03 - No locally commissioned IMHA available, the patient is on a waiting list and an alternative service is being sought</p> <p>04 - No locally commissioned IMHA available, the patient is not on a waiting list and no further action taken</p> <p>05 - No locally commissioned IMHA available, the patient is not on a waiting list and an alternative service is being sought</p> <p>98 - Other (not listed)</p> <p>99 - Not applicable: no requirement for an IMHA</p> | <p>Independent Mental Health Advocate available, the patient is on a waiting list and no further action taken</p> <p>03 - No locally commissioned Independent Mental Health Advocate available, the patient is on a waiting list and an alternative service is being sought</p> <p>04 - No locally commissioned Independent Mental Health Advocate available, the patient is not on a waiting list and no further action taken</p> <p>05 - No locally commissioned Independent Mental Health Advocate available, the patient is not on a waiting list and an alternative service is being sought</p> <p>98 - Other (not listed)</p> <p>99 - Not applicable: no requirement for an Independent Mental Health Advocate</p> |   |
| MHS501HospProv Spell | TRANSFORMING CARE INDICATOR        | Data Item | Amendment       | <p>Y - Patient is in scope of transforming care</p> <p>N - Patient is not in scope of transforming care</p>   | <p>Y - Yes - Patient is in scope of transforming care</p> <p>N - No - Patient is not in scope of transforming care</p>   | Data dictionary change request, reference 1768  |
| MHS501HospProv Spell | DECIDED TO ADMIT DATE              | Data Item | Addition        |   | DECIDED TO ADMIT DATE  | <p>We need the date and time that the decision was made to admit someone, which in many cases will be different to the referral and hospital spell dates and times.</p> <p>The time stamp needs to be accurate to support monitoring of waiting times</p> |

| Group/ Table         | Item Name / Level  | Item Type | Item Amend Type | Previous  | New  | Change Reason(s)   |
|----------------------|--|-----------|-----------------|---|--|--|
| MHS501HospProv Spell | DECIDED TO ADMIT TIME                                    | Data Item | Addition        |   | DECIDED TO ADMIT TIME  | We need the date and time that the decision was made to admit someone, which in many cases will be different to the referral and hospital spell dates and times.<br><br>The time stamp needs to be accurate to support monitoring of waiting times |
| MHS101Referral       | SOURCE OF REFERRAL FOR MENTAL HEALTH SERVICES DATA SET   | Data Item | Amendment       | Q1 - Drop In Contact  | Q1 - Mental Health Drop In Service   | Data dictionary change request, reference 1768   |
| MHS201CareContact    | PLANNED CARE CONTACT INDICATOR                           | Data Item | Addition        |   | PLANNED CARE CONTACT INDICATOR   | New data item added to line up with IAPT   |
| MHS301GroupSession   | NHS SERVICE AGREEMENT LINE NUMBER                        | Data Item | Addition        |   | NHS SERVICE AGREEMENT LINE NUMBER  | New data item added to line up with IAPT   |
| MHS501HospProv Spell | ADMISSION SOURCE (MENTAL HEALTH HOSPITAL PROVIDER SPELL) | Data Item | Amendment       | 19 - Usual place of residence unless listed below, for example, a private dwelling whether owner occupied or owned by Local Authority, housing association or other landlord. This includes wardened accommodation but not residential accommodation where health care is provided. It also includes PATIENTS with no fixed abode.<br>29 - Temporary place of residence when usually resident elsewhere (e.g. hotels, residential Educational Establishments) | 19 - Usual place of residence unless listed below, for example, a private dwelling whether owner occupied or owned by Local Authority, housing association or other landlord. This includes wardened accommodation but not residential accommodation where health care is provided. It also includes PATIENTS with no fixed abode.<br>29 - Temporary place of residence when usually | Data dictionary change request, reference 1768   |

| Group/ Table | Item Name / Level | Item Type | Item Amend Type | Previous   | New   | Change Reason(s) |
|--------------|-------------------|-----------|-----------------|--|---|------------------|
|              |                   |           |                 | 37 - Court<br>40 - Penal establishment<br>42 - Police Station / Police Custody Suite<br>49 - NHS other Hospital Provider - high security psychiatric accommodation in an NHS Hospital Provider (NHS Trust or NHS Foundation Trust)<br>51 - NHS other Hospital Provider - WARD for general PATIENTS or the younger physically disabled or Emergency Care Department<br>52 - NHS other Hospital Provider - WARD for maternity PATIENTS or Neonates<br>53 - NHS other Hospital Provider - WARD for PATIENTS who are mentally ill or have Learning Disabilities<br>54 - NHS run Care Home<br>65 - Local Authority residential accommodation where care is provided<br>66 - Local Authority foster care<br>85 - Non-NHS (other than Local Authority) run Care Home<br>87 - Non NHS run hospital<br>88 - Non-NHS (other than Local Authority) run Hospice<br>98 - Not applicable<br>99 - Not Known | resident elsewhere (e.g. hotels, residential Educational Establishments)<br>37 - Court<br>40 - Penal establishment<br>42 - Police Station / Police Custody Suite<br>49 - NHS other Hospital Provider - high security psychiatric accommodation in an NHS Hospital Provider (NHS Trust or NHS Foundation Trust)<br>51 - NHS other Hospital Provider - WARD for general PATIENTS or the younger physically disabled or Emergency Care Department<br>52 - NHS other Hospital Provider - WARD for maternity PATIENTS or Neonates<br>53 - NHS other Hospital Provider - WARD for PATIENTS who are mentally ill or have Learning Disabilities<br>55 - Care Home With Nursing<br>56 - Care Home Without Nursing<br>66 - Local Authority foster care<br>87 - Independent Sector Healthcare Provider run hospital<br>88 - Hospice<br>98 - Not applicable<br>99 - Not Known |                  |

## 2.2.12. Change control

The *Technical Output Specification* fully defines the individual changes applied to the data set, with each change logged in the 'Summary of Changes' tab. This *Change Specification* therefore represents a summary of changes included in MHSDS v5.0 which should be read in conjunction with the 'Summary of Changes' tab in the *Technical Output Specification* to fully understand the changes to the data set.

N.B. The latest version of the Technical Output Specification is published with other supporting documents on the NHS Digital [MHSDS Specifications and Guidance webpage](#)<sup>ii</sup>.

## Endnotes

---

<sup>i</sup> <https://digital.nhs.uk/data-and-information/information-standards/information-standards-and-data-collections-including-extractions/publications-and-notifications/standards-and-collections>

<sup>ii</sup> <https://digital.nhs.uk/data-and-information/data-collections-and-data-sets/data-sets/mental-health-services-data-set/mental-health-services-data-set-specifications-and-guidance>