

NHS Data Model and Dictionary



Type: Change Request
Reference: 1661
Version No: 1.0
Subject: Systemic Anti-Cancer Therapy Data Set Version 3
Effective Date: 1 September 2019
Reason for Change: Change to Information Standards
Publication Date: 29 November 2018

Background:

The Systemic Anti-Cancer Therapy Data Set Version 2 was approved by the Information Standards Board for Health and Social Care (ISB) as [ISB 1533 Amd 24/2013](#).

A number of changes have been identified since the last version, and the Systemic Anti-Cancer Therapy Data Set Version 3 includes:

- Amendments to National Code values and descriptions
- New Data Items
- Retirement of Data Items
- Changes to Organisation and Organisation Site Code Data Items to reflect changes to organisation reference data maintained and published by the Organisation Data Service, as defined by [SCCI0090: Health and Social Care Organisation Reference Data](#)
- Previous versions of the data set allowed data downloads in csv or XML format. The XML Schema has been withdrawn and from version 3 of the data set, data will be submitted in csv only.

Also, all items in the data set have been checked and those specific to the Systemic Anti-Cancer Therapy Data Set only have been renamed to make them all consistent.

To support the Information Standard, this Change Request updates the NHS Data Model and Dictionary to introduce the Systemic Anti-Cancer Therapy Data Set Version 3.

To view a demonstration on "How to Read an NHS Data Model and Dictionary Change Request", visit the NHS Data Model and Dictionary help pages at: http://www.datadictionary.nhs.uk/Flash_Files/changerequest.htm.

Note: if the web page does not open, please copy the link and paste into the web browser.

Summary of changes:

Diagrams

[SYSTEMIC ANTI-CANCER THERAPY DIAGRAM](#)

Changed Diagram

Data Set

[SYSTEMIC ANTI-CANCER THERAPY DATA SET](#)

Changed Dataset, Description

Supporting Information

[ANTI-CANCER DRUG CYCLE](#)

Changed Description

[ANTI-CANCER DRUG PROGRAMME \(RETIRED\)](#) renamed from [ANTI-CANCER DRUG PROGRAMME](#)

Changed Name, Description, status to Retired

[ANTI-CANCER DRUG REGIMEN](#)

Changed Description

[CHEMOTHERAPY](#)

Changed Description

[CLINICAL DATA SETS MESSAGE DOCUMENTATION](#)

Changed Description

[CLINICAL DATA SETS MESSAGE DOCUMENTATION MENU](#)

Changed Description

SYSTEMIC ANTI-CANCER THERAPY	New Supporting Information
SYSTEMIC ANTI-CANCER THERAPY DATA SET OVERVIEW	Changed Dataset, Description
SYSTEMIC ANTI-CANCER THERAPY DRUG ADMINISTRATION	New Supporting Information
SYSTEMIC ANTI-CANCER THERAPY DRUG CYCLE renamed from SYSTEMIC ANTI-CANCER DRUG CYCLE	Changed Name, Description
SYSTEMIC ANTI-CANCER THERAPY DRUG PROGRAMME (RETIRED) renamed from SYSTEMIC ANTI-CANCER DRUG PROGRAMME	Changed Name, Description, status to Retired
SYSTEMIC ANTI-CANCER THERAPY DRUG REGIMEN renamed from SYSTEMIC ANTI-CANCER DRUG REGIMEN	Changed Name, Description
SYSTEMIC ANTI-CANCER THERAPY SERVICE	New Supporting Information
XML SCHEMA TRUD DOWNLOAD	Changed Dataset, Description

Class Definitions

ACTIVITY DRUG	Changed Attributes
CHEMOTHERAPY PRESCRIPTION (RETIRED) renamed from CHEMOTHERAPY PRESCRIPTION	Changed Attributes, Name, Description, status to Retired, Supertype
CLINICAL INTERVENTION	Changed Attributes
PERFORMANCE STATUS	Changed Attributes
PLANNED ACTIVITY	Changed Attributes
PRESCRIPTION	Changed Description
UNIT OF MEASUREMENT	Changed Attributes

Attribute Definitions

ACTIVITY DATE	Changed Dataset
ACTIVITY IDENTIFIER	Changed Dataset
ADJUNCTIVE THERAPY TYPE	Changed Dataset
ANTI-CANCER REGIMEN NUMBER (RETIRED) renamed from ANTI-CANCER REGIMEN NUMBER	Changed Name, Dataset, Description, status to Retired
CHEMO-RADIATION INDICATOR (RETIRED) renamed from CHEMO-RADIATION INDICATOR	Changed Name, Dataset, Description, status to Retired
CLINICAL CLASSIFICATION CODE	Changed Dataset
CLINICAL INTERVENTION TEXT STRING	Changed Dataset
CLINICAL INTERVENTION TYPE	Changed Description
CLINICAL INVESTIGATION RESULT VALUE	Changed Dataset
CLINICAL TERMINOLOGY CODE	Changed Dataset
CLINICAL TRIAL INDICATOR	Changed Dataset
CO-MORBIDITY ADJUSTMENT INDICATOR	Changed Dataset, Description
CONSULTANT CODE	Changed Dataset
DECISION TO TREAT DATE	Changed Dataset, Description
ETHNIC CATEGORY CODE	Changed Dataset
FIRST DEFINITIVE TREATMENT PLANNED (RETIRED) renamed from FIRST DEFINITIVE TREATMENT PLANNED	Changed Name, Description, status to Retired
FIRST DEFINITIVE TREATMENT PROVIDED (RETIRED) renamed from FIRST DEFINITIVE TREATMENT PROVIDED	Changed Name, Description, status to Retired
LOCAL PATIENT IDENTIFIER	Changed Dataset
MAIN SPECIALTY CODE	Changed Dataset
NHS NUMBER	Changed Dataset
NHS NUMBER STATUS INDICATOR CODE	Changed Dataset
NUMBER OF SYSTEMIC ANTI-CANCER THERAPY CYCLES PLANNED (RETIRED) renamed from NUMBER OF SYSTEMIC ANTI-CANCER THERAPY CYCLES PLANNED	Changed Name, Dataset, Description, status to Retired
ORGANISATION CODE	Changed Dataset

ORGANISATION IDENTIFIER	Changed Dataset
OTHER UNIT OF MEASUREMENT DESCRIPTION FOR SYSTEMIC ANTI-CANCER THERAPY	New Attribute
PERFORMANCE STATUS CODE FOR YOUNG PERSON (RETIRED) renamed from PERFORMANCE STATUS FOR YOUNG PERSON	Changed Name, Dataset, Description, status to Retired
PERFORMANCE STATUS FOR ADULTS	Changed Dataset, Description
PERSON BIRTH DATE	Changed Dataset
PERSON DEATH DATE	Changed Dataset
PERSON GENDER CODE	Changed Dataset
PERSON NAME WORD TEXT	Changed Dataset
PERSON STATED GENDER CODE	Changed Dataset
PLANNED TREATMENT CHANGE REASON (RETIRED) renamed from PLANNED TREATMENT CHANGE REASON	Changed Name, Dataset, Description, status to Retired
POSTCODE	Changed Dataset
SYSTEMIC ANTI-CANCER THERAPY ACTUAL DOSE renamed from CHEMOTHERAPY ACTUAL DOSE	Changed Name, Dataset, Description
SYSTEMIC ANTI-CANCER THERAPY CURATIVE TREATMENT COMPLETED AS PLANNED INDICATOR	New Attribute
SYSTEMIC ANTI-CANCER THERAPY CURATIVE TREATMENT NOT COMPLETED OUTCOME REASON	New Attribute
SYSTEMIC ANTI-CANCER THERAPY DRUG NAME renamed from SYSTEMIC ANTI-CANCER DRUG NAME	Changed Name, Dataset, Description
SYSTEMIC ANTI-CANCER THERAPY DRUG REGIMEN ACRONYM renamed from DRUG REGIMEN ACRONYM	Changed Name, Dataset, Description
SYSTEMIC ANTI-CANCER THERAPY DRUG REGIMEN MODIFICATION INDICATOR FOR DOSE REDUCTION renamed from SYSTEMIC ANTI-CANCER THERAPY REGIMEN MODIFICATION INDICATOR	Changed Name, Dataset, Description
SYSTEMIC ANTI-CANCER THERAPY DRUG REGIMEN TREATMENT INTENT renamed from DRUG TREATMENT INTENT	Changed Name, Dataset, Description
SYSTEMIC ANTI-CANCER THERAPY DRUG ROUTE OF ADMINISTRATION	Changed Dataset, Description
SYSTEMIC ANTI-CANCER THERAPY NON CURATIVE TREATMENT PATIENT BENEFIT INDICATOR	New Attribute
SYSTEMIC ANTI-CANCER THERAPY PROGRAMME NUMBER (RETIRED) renamed from SYSTEMIC ANTI-CANCER THERAPY PROGRAMME NUMBER	Changed Name, Dataset, Description, status to Retired
SYSTEMIC ANTI-CANCER THERAPY TOXICITY MODIFICATION INDICATOR	New Attribute
TNM CATEGORY	Changed Dataset
UNIT OF MEASUREMENT FOR SYSTEMIC ANTI-CANCER THERAPY	New Attribute
Data Elements	
ADJUNCTIVE THERAPY TYPE	Changed Dataset
ANTI-CANCER REGIMEN NUMBER (RETIRED) renamed from ANTI-CANCER REGIMEN NUMBER	Changed Name, Dataset, Description, status to Retired, linked Attribute
CARE PROFESSIONAL MAIN SPECIALTY CODE (START SYSTEMIC ANTI-CANCER THERAPY)	Changed Dataset, Description
CHEMO-RADIATION INDICATOR (RETIRED) renamed from CHEMO-RADIATION INDICATOR	Changed Name, Dataset, Description, status to Retired, linked Attribute
CLINICAL TRIAL INDICATOR	Changed Dataset, Description
CO-MORBIDITY ADJUSTMENT INDICATOR	Changed Dataset
CONSULTANT CODE (INITIATED SYSTEMIC ANTI-CANCER THERAPY)	Changed Dataset, Description
DECISION TO TREAT DATE (SYSTEMIC ANTI-CANCER THERAPY DRUG REGIMEN) renamed from DECISION TO TREAT DATE (ANTI-CANCER DRUG REGIMEN)	Changed Name, Dataset, Description

DIAGNOSIS (SNOMED CT)	Changed Dataset
ETHNIC CATEGORY	Changed Dataset
GENERAL MEDICAL PRACTICE CODE (PATIENT REGISTRATION)	Changed Dataset
LOCAL PATIENT IDENTIFIER (EXTENDED)	Changed Dataset, Description
MORPHOLOGY (ICD-O AT START SYSTEMIC ANTI-CANCER THERAPY)	Changed Dataset, Description
NHS NUMBER	Changed Dataset, Description
NHS NUMBER STATUS INDICATOR CODE	Changed Dataset
NUMBER OF SYSTEMIC ANTI-CANCER THERAPY CYCLES PLANNED (RETIRED) renamed from NUMBER OF SYSTEMIC ANTI-CANCER THERAPY CYCLES PLANNED	Changed Name, Dataset, Description, status to Retired, linked Attribute
ORGANISATION CODE (CODE OF PROVIDER)	Changed Dataset
ORGANISATION IDENTIFIER (CODE OF PROVIDER)	Changed Dataset
ORGANISATION IDENTIFIER (OF SYSTEMIC ANTI-CANCER THERAPY ADMINISTRATION)	New Data Element
OTHER SYSTEMIC ANTI-CANCER THERAPY CURATIVE TREATMENT NOT COMPLETED OUTCOME REASON	New Data Element
OTHER UNIT OF MEASUREMENT DESCRIPTION (SYSTEMIC ANTI-CANCER THERAPY)	New Data Element
PERFORMANCE STATUS (ADULT)	Changed Dataset, Description
PERFORMANCE STATUS (ADULT START OF SYSTEMIC ANTI-CANCER THERAPY DRUG CYCLE)	New Data Element
PERFORMANCE STATUS (ADULT START OF SYSTEMIC ANTI-CANCER THERAPY DRUG REGIMEN)	New Data Element
PERFORMANCE STATUS (YOUNG PERSON) (RETIRED) renamed from PERFORMANCE STATUS (YOUNG PERSON)	Changed Name, Dataset, Description, status to Retired, linked Attribute
PERSON BIRTH DATE	Changed Dataset
PERSON DEATH DATE	Changed Dataset
PERSON FAMILY NAME	Changed Dataset
PERSON GENDER CODE CURRENT	Changed Dataset
PERSON GIVEN NAME	Changed Dataset
PERSON HEIGHT IN METRES	Changed Dataset
PERSON HEIGHT IN METRES (START OF SYSTEMIC ANTI-CANCER THERAPY DRUG REGIMEN)	New Data Element
PERSON STATED GENDER CODE	Changed Dataset
PERSON WEIGHT	Changed Dataset, Description
PERSON WEIGHT (START OF SYSTEMIC ANTI-CANCER THERAPY DRUG CYCLE)	New Data Element
PERSON WEIGHT (START OF SYSTEMIC ANTI-CANCER THERAPY DRUG REGIMEN)	New Data Element
PLANNED TREATMENT CHANGE REASON (RETIRED) renamed from PLANNED TREATMENT CHANGE REASON	Changed Name, Dataset, Description, status to Retired, linked Attribute
POSTCODE OF USUAL ADDRESS	Changed Dataset
PRIMARY DIAGNOSIS (ICD AT START SYSTEMIC ANTI-CANCER THERAPY)	Changed Dataset, Description
PRIMARY PROCEDURE (OPCS)	Changed Dataset
ROUTE OF ADMINISTRATION (SNOMED CT DM+D)	Changed Dataset
START DATE (FINAL SYSTEMIC ANTI-CANCER THERAPY) (RETIRED) renamed from START DATE (FINAL SYSTEMIC ANTI-CANCER THERAPY)	Changed Name, Dataset, Description, status to Retired, linked Attribute
START DATE (SYSTEMIC ANTI-CANCER THERAPY DRUG CYCLE) renamed from START DATE (SYSTEMIC ANTI-CANCER DRUG CYCLE)	Changed Name, Dataset, Description

START DATE (SYSTEMIC ANTI-CANCER THERAPY DRUG REGIMEN) renamed from START DATE (ANTI-CANCER DRUG REGIMEN)	Changed Name, Dataset, Description
SYSTEMIC ANTI-CANCER THERAPY ACTUAL DOSE renamed from CHEMOTHERAPY ACTUAL DOSE	Changed Name, Dataset, Description
SYSTEMIC ANTI-CANCER THERAPY ADMINISTRATION DATE	Changed Dataset, Description
SYSTEMIC ANTI-CANCER THERAPY CURATIVE TREATMENT COMPLETED AS PLANNED INDICATOR	New Data Element
SYSTEMIC ANTI-CANCER THERAPY CURATIVE TREATMENT NOT COMPLETED OUTCOME REASON	New Data Element
SYSTEMIC ANTI-CANCER THERAPY DRUG (SNOMED CT DM+D)	New Data Element
SYSTEMIC ANTI-CANCER THERAPY DRUG CYCLE IDENTIFIER renamed from ANTI-CANCER DRUG CYCLE IDENTIFIER	Changed Name, Dataset, Description
SYSTEMIC ANTI-CANCER THERAPY DRUG NAME renamed from SYSTEMIC ANTI-CANCER DRUG NAME	Changed Name, Dataset, Description
SYSTEMIC ANTI-CANCER THERAPY DRUG REGIMEN ACRONYM renamed from DRUG REGIMEN ACRONYM	Changed Name, Dataset, Description
SYSTEMIC ANTI-CANCER THERAPY DRUG REGIMEN MODIFICATION INDICATOR (DOSE REDUCTION) renamed from SYSTEMIC ANTI-CANCER THERAPY REGIMEN MODIFICATION INDICATOR (DOSE REDUCTION)	Changed Name, Dataset, Description
SYSTEMIC ANTI-CANCER THERAPY DRUG REGIMEN TREATMENT INTENT renamed from DRUG TREATMENT INTENT	Changed Name, Dataset, Description
SYSTEMIC ANTI-CANCER THERAPY DRUG ROUTE OF ADMINISTRATION	Changed Dataset
SYSTEMIC ANTI-CANCER THERAPY NON CURATIVE TREATMENT PATIENT BENEFIT INDICATOR	New Data Element
SYSTEMIC ANTI-CANCER THERAPY PROGRAMME NUMBER (RETIRED) renamed from SYSTEMIC ANTI-CANCER THERAPY PROGRAMME NUMBER	Changed Name, Dataset, Description, status to Retired, linked Attribute
SYSTEMIC ANTI-CANCER THERAPY REGIMEN MODIFICATION INDICATOR (DAYS REDUCED) (RETIRED) renamed from SYSTEMIC ANTI-CANCER THERAPY REGIMEN MODIFICATION INDICATOR (DAYS REDUCED)	Changed Name, Dataset, Description, status to Retired, linked Attribute
SYSTEMIC ANTI-CANCER THERAPY REGIMEN MODIFICATION INDICATOR (TIME DELAY) (RETIRED) renamed from SYSTEMIC ANTI-CANCER THERAPY REGIMEN MODIFICATION INDICATOR (TIME DELAY)	Changed Name, Dataset, Description, status to Retired, linked Attribute
SYSTEMIC ANTI-CANCER THERAPY TOXICITY MODIFICATION INDICATOR	New Data Element
TNM STAGE GROUPING (FINAL PRETREATMENT)	Changed Dataset
UNIT OF MEASUREMENT (SNOMED CT DM+D)	Changed Dataset
UNIT OF MEASUREMENT (SYSTEMIC ANTI-CANCER THERAPY)	New Data Element

XML Schema Constraint

SYSTEMIC ANTI-CANCER THERAPY DATA SET CONSTRAINTS	New XML Schema Constraint
SYSTEMIC ANTI-CANCER THERAPY DATA SET XML SCHEMA CONSTRAINTS (RETIRED) renamed from SYSTEMIC ANTI-CANCER THERAPY DATA SET XML SCHEMA CONSTRAINTS	Changed Name, Dataset, Description, status to Retired

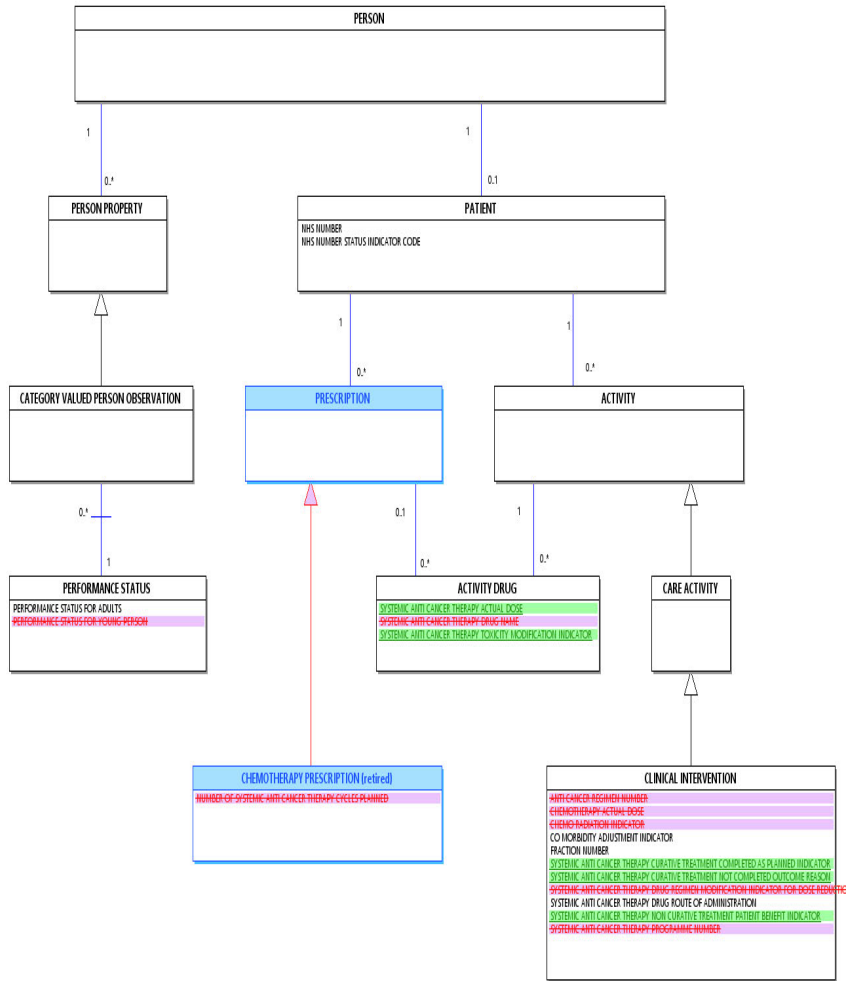
Date: 29 November 2018

Sponsor: Dr Jem Rashbass, National Director for Disease Registration and Cancer Analysis, Public Health England

Note: New text is shown with a blue background. Deleted text is crossed out. Retired text is shown in grey. Within the Diagrams deleted classes and relationships are red, changed items are blue and new items are green.

SYSTEMIC ANTI-CANCER THERAPY DIAGRAM

Change to Diagram: Changed Diagram



SYSTEMIC ANTI-CANCER THERAPY DATA SET

Change to Data Set: Changed Dataset, Description

[Systemic Anti-Cancer Therapy Data Set Overview](#)

The Mandatory, Required or Optional (M/R/O) column indicates the recommendation for the inclusion of data. For a "Full Screen" view, click [Systemic Anti-Cancer Therapy Data Set](#).

In the "Full Screen" view, to return to the "Data Set" view, click the browser "back" button.

The Mandatory, Required, Optional or Pilot (M/R/O/P) column indicates the recommendation for the inclusion of data.

- M = Mandatory: this data element is mandatory and the technical process (e.g. submission of the data set, production of output etc) cannot be completed without this data element being present
- R = Required: NHS business processes cannot be delivered without this data element
- O = Optional: the inclusion of this data element is optional as required for local purposes.
- O = Optional: the inclusion of this data element is optional as required for local purposes
- P = Pilot: this data element is for piloting use only.

For guidance on downloading the XML Schema, see [XML Schema TRUD Download](#). For guidance on the Data Set constraints, see the [Systemic Anti-Cancer Therapy Data Set Constraints](#).

For guidance on the XML Schema constraints, see the [Systemic Anti-Cancer Therapy Data Set XML Schema Constraints](#).

DEMOGRAPHICS AND CONSULTANT

To carry personal, organisation and consultant details.
One occurrence of this group is required.

M/R/O	Data Set Data Elements
M	NHS NUMBER

To carry details for the demographics and consultant.
One occurrence of this group is required.

M/R	Data Set Data Elements
M	NHS NUMBER or LOCAL PATIENT IDENTIFIER (EXTENDED)
M	NHS NUMBER STATUS INDICATOR CODE
M	PERSON FAMILY NAME
M	PERSON GIVEN NAME
M	PERSON BIRTH DATE
R	PERSON GENDER CODE CURRENT
R	ETHNIC CATEGORY
R	PERSON STATED GENDER CODE
M	POSTCODE OF USUAL ADDRESS
R	GENERAL MEDICAL PRACTICE CODE (PATIENT REGISTRATION)
R	CONSULTANT CODE (INITIATED SYSTEMIC ANTI-CANCER THERAPY)
R	CARE PROFESSIONAL MAIN SPECIALTY CODE (START SYSTEMIC ANTI-CANCER THERAPY)
M	ORGANISATION CODE (CODE OF PROVIDER)
M	ORGANISATION IDENTIFIER (CODE OF PROVIDER)

CLINICAL STATUS

To carry the clinical status details.
One occurrence of this group is required.

M/R/O	Data Set Data Elements
M	PRIMARY DIAGNOSIS (ICD AT START SYSTEMIC ANTI-CANCER THERAPY) and/or MORPHOLOGY (ICD-O AT START SYSTEMIC ANTI-CANCER THERAPY)
R	TNM STAGE GROUPING (FINAL PRETREATMENT)
O	DIAGNOSIS (SNOMED CT)

PROGRAMME AND REGIMEN

REGIMEN

To carry details of the Systemic Anti-Cancer Therapy Programme and Systemic Anti-Cancer Drug Regimen.
Multiple occurrences of this group are permitted (at least one must be present).

M/R/O	Data Set Data Elements
R	SYSTEMIC ANTI-CANCER THERAPY PROGRAMME NUMBER
R	ANTI-CANCER REGIMEN NUMBER
R	DRUG TREATMENT INTENT
M	DRUG REGIMEN ACRONYM
R	PERSON HEIGHT IN METRES
R	PERSON WEIGHT
R	

[PERFORMANCE STATUS \(ADULT\)](#)
 or
[PERFORMANCE STATUS \(YOUNG PERSON\)](#)

**To carry details of the Systemic Anti-Cancer Drug Regimen.
 One occurrence of this group is permitted.**

M/R	Data Set Data Elements
R	ADJUNCTIVE THERAPY TYPE
R	SYSTEMIC ANTI-CANCER THERAPY DRUG REGIMEN TREATMENT INTENT Up to four occurrences of this item are permitted
M	SYSTEMIC ANTI-CANCER THERAPY DRUG REGIMEN ACRONYM
R	PERSON HEIGHT IN METRES (START OF SYSTEMIC ANTI-CANCER THERAPY DRUG REGIMEN)
R	PERSON WEIGHT (START OF SYSTEMIC ANTI-CANCER THERAPY DRUG REGIMEN)
R	PERFORMANCE STATUS (ADULT START OF SYSTEMIC ANTI-CANCER THERAPY DRUG REGIMEN)
R	CO-MORBIDITY ADJUSTMENT INDICATOR
R	DECISION TO TREAT DATE (ANTI-CANCER DRUG REGIMEN)
M	START DATE (ANTI-CANCER DRUG REGIMEN)
R	DECISION TO TREAT DATE (SYSTEMIC ANTI-CANCER THERAPY DRUG REGIMEN)
M	START DATE (SYSTEMIC ANTI-CANCER THERAPY DRUG REGIMEN)
R	CLINICAL TRIAL INDICATOR
R	CHEMO RADIATION INDICATOR
R	NUMBER OF SYSTEMIC ANTI-CANCER THERAPY CYCLES PLANNED

CYCLE

**To carry details of each Systemic Anti-Cancer Therapy Cycle.
 Multiple occurrences of this group are permitted (at least one must be present).**

M/R/O	Data Set Data Elements
M	ANTI-CANCER DRUG CYCLE IDENTIFIER
R	START DATE (SYSTEMIC ANTI-CANCER DRUG CYCLE)
O	PERSON WEIGHT
R	PERFORMANCE STATUS (ADULT) or PERFORMANCE STATUS (YOUNG PERSON)
R	PRIMARY PROCEDURE (OPCS)

**To carry details of each Systemic Anti-Cancer Therapy Cycle.
 Multiple occurrences of this group are permitted. One for each Systemic Anti-Cancer Therapy Cycle.**

M/R	Data Set Data Elements
R	SYSTEMIC ANTI-CANCER THERAPY DRUG CYCLE IDENTIFIER
M	START DATE (SYSTEMIC ANTI-CANCER THERAPY DRUG CYCLE)
R	PERSON WEIGHT (START OF SYSTEMIC ANTI-CANCER THERAPY DRUG CYCLE)
R	PERFORMANCE STATUS (ADULT START OF SYSTEMIC ANTI-CANCER THERAPY DRUG CYCLE)

DRUG DETAILS

**To carry details of the Systemic Anti-Cancer Therapy Drugs.
 Multiple occurrences of this group are permitted (one occurrence for each Systemic Anti-Cancer Therapy Drug – at least one must be present).**

M/R/O	Data Set Data Elements
R	SYSTEMIC ANTI-CANCER DRUG NAME
R	CHEMOTHERAPY ACTUAL DOSE

**To carry details of the Systemic Anti-Cancer Therapy Drugs for the patients treatment.
 Multiple occurrences of this group are permitted. One for each Systemic Anti-Cancer Therapy Drug.**

M/R/O/P	Data Set Data Elements
---------	------------------------

M	SYSTEMIC ANTI-CANCER THERAPY DRUG NAME
P	SYSTEMIC ANTI-CANCER THERAPY DRUG (SNOMED CT DM+D)
R	SYSTEMIC ANTI-CANCER THERAPY ACTUAL DOSE
R	UNIT OF MEASUREMENT (SYSTEMIC ANTI-CANCER THERAPY)
R	OTHER UNIT OF MEASUREMENT DESCRIPTION (SYSTEMIC ANTI-CANCER THERAPY)
O	UNIT OF MEASUREMENT (SNOMED CT DM+D)
R	SYSTEMIC ANTI-CANCER THERAPY DRUG ROUTE OF ADMINISTRATION
R	SYSTEMIC ANTI-CANCER THERAPY ADMINISTRATION DATE
R	ORGANISATION CODE (CODE OF PROVIDER)
R	PRIMARY PROCEDURE (OPCS)
O	ROUTE OF ADMINISTRATION (SNOMED CT DM+D)
M	SYSTEMIC ANTI-CANCER THERAPY ADMINISTRATION DATE
R	ORGANISATION IDENTIFIER (OF SYSTEMIC ANTI-CANCER THERAPY ADMINISTRATION)

OUTCOME

To carry details of the outcome / summary.
One occurrence of this group is permitted.

M/R/O	Data Set Data Elements
R	START DATE (FINAL SYSTEMIC ANTI-CANCER THERAPY)
R	SYSTEMIC ANTI-CANCER THERAPY REGIMEN MODIFICATION INDICATOR (DOSE REDUCTION)
R	SYSTEMIC ANTI-CANCER THERAPY REGIMEN MODIFICATION INDICATOR (TIME DELAY)
R	SYSTEMIC ANTI-CANCER THERAPY REGIMEN MODIFICATION INDICATOR (DAYS REDUCED)
R	PLANNED TREATMENT CHANGE REASON
R	PERSON DEATH DATE

To carry details of the outcome applicable to the patient's treatment.
One occurrence of this group is permitted.

R/P	Data Set Data Elements
R	SYSTEMIC ANTI-CANCER THERAPY DRUG REGIMEN MODIFICATION INDICATOR (DOSE REDUCTION)
R	SYSTEMIC ANTI-CANCER THERAPY CURATIVE TREATMENT COMPLETED AS PLANNED INDICATOR
R	SYSTEMIC ANTI-CANCER THERAPY CURATIVE TREATMENT NOT COMPLETED OUTCOME REASON Up to four occurrences of this item are permitted
R	OTHER SYSTEMIC ANTI-CANCER THERAPY CURATIVE TREATMENT NOT COMPLETED OUTCOME REASON
R	SYSTEMIC ANTI-CANCER THERAPY NON CURATIVE TREATMENT PATIENT BENEFIT INDICATOR
P	SYSTEMIC ANTI-CANCER THERAPY TOXICITY MODIFICATION INDICATOR

ANTI-CANCER DRUG CYCLE

Change to Supporting Information: Changed Description

An [Anti-Cancer Drug Cycle](#) is a [CLINICAL INTERVENTION](#).

An [Anti-Cancer Drug Cycle](#) is the period of time during which anti-cancer drugs are administered to a [PATIENT](#) in an agreed pattern.

~~Cycle is a long established term used to denote the repeating pattern of many [Chemotherapy Programmes](#) / [Chemotherapy Regimens](#).~~

A new [Anti-Cancer Drug Cycle](#) commences when the original pattern starts again.

ANTI-CANCER DRUG PROGRAMME (RETIRED), renamed from ANTI-CANCER DRUG PROGRAMME

Change to Supporting Information: Changed Name, Description, status to Retired

An [Anti-Cancer Drug Programme](#) is a [CLINICAL INTERVENTION](#). This item has been retired from the NHS Data Model and Dictionary.

An [Anti-Cancer Drug Programme](#) is a course of anti-cancer drug treatment. This can include [Chemotherapy](#), [Immunotherapy](#) etc. The last live version of this item is available in the ?????? release of the NHS Data Model and Dictionary.

Two or more [Anti-Cancer Drug Regimens](#) may be given sequentially as part of a planned [Anti-Cancer Drug Programme](#). Access to this version can be obtained by emailing information.standards@nhs.net with "NHS Data Model and Dictionary - Archive Request" in the email subject line.

ANTI-CANCER DRUG PROGRAMME (RETIRED), renamed from ANTI-CANCER DRUG PROGRAMME

Change to Supporting Information: Changed Name, Description, status to Retired

- Changed Name from Data_Dictionary.NHS_Business_Definitions.A.Anti-Cancer_Drug_Programme to Retired.Data_Dictionary.NHS_Business_Definitions.A.Anti-Cancer_Drug_Programme
 - Changed Description
 - Retired Anti-Cancer Drug Programme
-

ANTI-CANCER DRUG REGIMEN

Change to Supporting Information: Changed Description

An [Anti-Cancer Drug Regimen](#) is a [CLINICAL INTERVENTION](#).

An [Anti-Cancer Drug Regimen](#) is a prescribed systematic form of treatment for a course of drug(s), comprising one or more [Anti-Cancer Drug Cycles](#), provided to a [PATIENT](#) suffering from cancer.

These can include:

- [Chemotherapy](#)
 - [Cytotoxic Chemotherapy](#)
 - [Hormone Therapy](#)
 - [Immunotherapy](#) etc
 - [Immunotherapy](#)
 - [Systemic Anti-Cancer Therapy](#) etc
-

CHEMOTHERAPY

Change to Supporting Information: Changed Description

[Chemotherapy](#) (also known as [Systemic Anti-Cancer Therapy](#)) is a [CLINICAL INTERVENTION](#). [Chemotherapy](#) is a [CLINICAL INTERVENTION](#).

[Chemotherapy](#) is a treatment for cancer. It uses medication to kill cancerous cells. [Chemotherapy](#) is a treatment for cancer which uses medication to kill cancerous cells.

For further information on [Chemotherapy](#), see the NHS website at: [Chemotherapy](#).

CHEMOTHERAPY

Change to Supporting Information: Changed Description

- Changed Description

CLINICAL DATA SETS MESSAGE DOCUMENTATION

Change to Supporting Information: Changed Description

XML Schema Download:

- [XML Schema TRUD Download](#)

XML Schema Constraints:

- [Cancer Outcomes and Services Data Set XML Schema Constraints](#)
- [Diagnostic Imaging Data Set XML Schema Constraints](#)
- [HIV and AIDS Reporting Data Set XML Schema Constraints](#)
- [NHS Health Checks Data Set XML Schema Constraints](#)
- [Systemic Anti-Cancer Therapy Data Set XML Schema Constraints](#)

Data Set Constraints:

Data Set Constraints:

- [Systemic Anti-Cancer Therapy](#)

CLINICAL DATA SETS MESSAGE DOCUMENTATION MENU

Change to Supporting Information: Changed Description

[Clinical Data Sets Menu](#)

XML Schema Download:

- [XML Schema TRUD Download](#)

XML Schema Constraints:

- [Cancer Outcomes and Services](#)
- [Diagnostic Imaging](#)
- [HIV and AIDS](#)
- [NHS Health Checks](#)
- [Systemic Anti-Cancer Therapy](#)

Data Set Constraints:

Data Set Constraints:

- [Systemic Anti-Cancer Therapy](#)

SYSTEMIC ANTI-CANCER THERAPY

Change to Supporting Information: New Supporting Information

[Systemic Anti-Cancer Therapy](#) is a [CLINICAL INTERVENTION](#).

[Systemic Anti-Cancer Therapy](#) is for the treatment of solid tumours and haematological cancers through the systemic delivery of agents that have anti-tumour effects.

This supporting information is also known by these names:

Context	Alias
plural	Systemic Anti-Cancer Therapies

SYSTEMIC ANTI-CANCER THERAPY DATA SET OVERVIEW

Change to Supporting Information: Changed Dataset, Description

Introduction:

The [Systemic Anti-Cancer Therapy Data Set](#) collects clinical management information on [PATIENTS](#) undergoing [Chemotherapy](#) in (or funded by) the NHS in England. The [Systemic Anti-Cancer Therapy Data Set](#) collects clinical management information on [PATIENTS](#) undergoing [Systemic Anti-Cancer Therapy](#) in (or funded by) the NHS in England.

In the clinical setting its primary use will be in prescribing and administering [Chemotherapy](#). The standard also specifies secondary uses information about systemic anti cancer therapy ([Chemotherapy](#)) which is required to assist in achieving, supporting and monitoring the NHS Operating Framework, specialist commissioning and related policy. In the clinical setting its primary use is in prescribing and administering [Systemic Anti-Cancer Therapy](#). The standard also specifies secondary uses information about [Systemic Anti-Cancer Therapy](#) which is required to assist in achieving, supporting and monitoring the NHS Operating Framework, specialised commissioning and related policy.

Note: the term "[Chemotherapy](#)" is used synonymously with [Systemic Anti-Cancer Therapy](#) as it is the term in common usage.

Details of Standard:

The [Systemic Anti-Cancer Therapy Data Set](#) relates to all cancer [PATIENTS](#), both adult and paediatric, in both admitted [PATIENT](#) care and outpatient and community settings, who are receiving [Chemotherapy](#) treatment for all solid tumour and haematological malignancies, including those treated in clinical trials. The [Systemic Anti-Cancer Therapy Data Set](#) relates to all cancer [PATIENTS](#), both adult and paediatric, in both admitted [PATIENT](#) care and outpatient and community settings, who are receiving [Systemic Anti-Cancer Therapy](#) for all solid [Tumour](#) and haematological malignancies, including those treated in [CLINICAL TRIALS](#).

The [Systemic Anti-Cancer Therapy Data Set](#) covers the period from the [Start Date](#) of the [Systemic Anti-Cancer Drug Programme](#) to the [Start Date](#) of the last [Systemic Anti-Cancer Drug Cycle](#). The [Systemic Anti-Cancer Therapy Data Set](#) covers the period from the [Start Date](#) of the [Systemic Anti-Cancer Therapy Drug Regimen](#) to the [Start Date](#) of the last [Systemic Anti-Cancer Therapy Drug Cycle](#).

Note: [PATIENTS](#) may end their treatment with an oral or other component taken at home. Although the dispensing of this will be recorded in the final [Systemic Anti-Cancer Drug Cycle](#), it is not possible to confirm that the [PATIENT](#) has taken the medication. Although the dispensing of this will be recorded in the final [Systemic Anti-Cancer Therapy Drug Cycle](#), it is not possible to confirm that the [PATIENT](#) has taken the medication.

Data Set Structure and Transmission:

[Chemotherapy](#) is given over a prolonged period of time, often months or years, comprising repeating and sequential elements. [Systemic Anti-Cancer Therapy](#) is given over a prolonged period of time, often months or years, comprising repeating and sequential elements. The [PATIENT](#) may attend two or more [Health Care Providers](#) during the course of treatment.

In order to track the [PATIENT](#) during treatment, the data set must be capable of linking all the elements of care in a consistent and ordered way. In order to achieve this, the [Systemic Anti-Cancer Therapy Data Set](#) has a branching structure which links the initial data fields, which will remain constant during the treatment, with detail of each [Systemic Anti-Cancer Drug Regimen](#), [Systemic Anti-Cancer Drug Cycle](#) and drug administration. At the completion or cessation of a [Systemic Anti-Cancer Drug Regimen](#), the outcome section must link back to all previous fields. In order to achieve this, the [Systemic Anti-Cancer Therapy Data Set](#) has a branching structure which links the initial data fields, which will remain constant during the treatment, with detail of each [Systemic Anti-Cancer Therapy Drug Regimen](#), [Systemic Anti-Cancer Therapy Drug Cycle](#) and [Systemic Anti-Cancer Therapy Drug Administration](#). At the completion or cessation of a [Systemic Anti-Cancer Therapy Drug Regimen](#), the outcome section must link back to all previous fields. It must be possible to reconstitute details of each [PATIENT](#)'s sequential management from the serial downloads received.

All [NHS Trusts](#) and [NHS Foundation Trusts](#) providing cancer [Chemotherapy SERVICES](#) are required to submit monthly data downloads to an agreed timetable, one month in arrears. These data must represent all treatment activity in the month period, including [Systemic Anti-Cancer Drug Regimens](#) started and completed or ceased in that time period. All [NHS Trusts](#) and [NHS Foundation Trusts](#) providing [Systemic Anti-Cancer Therapy Services](#) are required to submit monthly

data downloads to an agreed timetable, two months in arrears. These data must represent all treatment activity in the month period, including Systemic Anti-Cancer Therapy Drug Regimens started and completed or ceased in the REPORTING PERIOD.

The data repository is hosted by the National Cancer Registration and Analysis Service (NCRAS) Oxford, (formerly the Oxford Cancer Intelligence Unit), and the data is held under their section 251 of the National Health Service Act 2006. The data repository is hosted by the National Cancer Registration and Analysis Service (NCRAS) and the data is held under their section 251 of the National Health Service Act 2006.

Data downloads will be either the csv or XML format and will uniquely identify the provider. Data downloads is by csv and will uniquely identify the Health Care Provider.

Further Guidance:

Detailed technical guidance on the processes required, and any required updates from time to time, is available from the National Cancer Registration and Analysis Service in the Technical Guidance documents supporting the programme. Detailed technical guidance on the processes required, and any required updates, is available from the National Cancer Registration and Analysis Service in the Technical Guidance documents supporting the programme.

SYSTEMIC ANTI-CANCER THERAPY DRUG ADMINISTRATION

Change to Supporting Information: New Supporting Information

A Systemic Anti-Cancer Therapy Drug Administration is a CLINICAL INTERVENTION.

A Systemic Anti-Cancer Therapy Drug Administration is the giving of a therapeutic agent to a PATIENT, for example, infusion, inhalation, injection, paste, suppository or tablet during Systemic Anti-Cancer Therapy.

This supporting information is also known by these names:

Context	Alias
plural	Systemic Anti-Cancer Therapy Drug Administrations

SYSTEMIC ANTI-CANCER THERAPY DRUG CYCLE, renamed from SYSTEMIC ANTI-CANCER DRUG CYCLE

Change to Supporting Information: Changed Name, Description

A Systemic Anti-Cancer Drug Cycle (also known as a Chemotherapy Cycle) is an Anti-Cancer Drug Cycle, which is a CLINICAL INTERVENTION. A Systemic Anti-Cancer Therapy Drug Cycle is an Anti-Cancer Drug Cycle.

A Systemic Anti-Cancer Therapy Drug Cycle is a prescribed systematic form of treatment for a course of drug(s), comprising one or more Systemic Anti-Cancer Therapy Drug Administrations.

Some Systemic Anti-Cancer Drug Regimens have alternating repeating elements and some have consecutive sets of repeating elements. In all these cases the term "cycle" would be equally valid and help to identify the stage of progress of the PATIENT through Chemotherapy. Some Systemic Anti-Cancer Therapy Drug Regimens have alternating repeating elements and some have consecutive sets of repeating elements. In all these cases the term "cycle" would be equally valid and help to identify the stage of progress of the PATIENT through Systemic Anti-Cancer Therapy.

For continuous, normally oral Chemotherapy, it will be necessary to agree an arbitrary equivalent. In order to align with the advice of the Oncology Regimen Steering Group, which informs the OPCS-4 Guidance for Clinical Coders, a cycle will be 28 days from the first administration.

SYSTEMIC ANTI-CANCER THERAPY DRUG CYCLE, renamed from SYSTEMIC ANTI-CANCER DRUG CYCLE

Change to Supporting Information: Changed Name, Description

- Changed Name from Data_Dictionary.NHS_Business_Definitions.S.Systemic_Anti-Cancer_Drug_Cycle to Data_Dictionary.NHS_Business_Definitions.S.Systemic_Anti-Cancer_Therapy_Drug_Cycle
- Changed Description

SYSTEMIC ANTI-CANCER THERAPY DRUG PROGRAMME (RETIRED) renamed from SYSTEMIC ANTI-CANCER DRUG PROGRAMME

Change to Supporting Information: Changed Name, Description, status to Retired

A ~~Systemic Anti-Cancer Drug Programme~~ (also known as a ~~Chemotherapy Programme~~) is an ~~Anti-Cancer Drug Programme~~, which is a ~~CLINICAL INTERVENTION~~. This item has been retired from the NHS Data Model and Dictionary.

A ~~Systemic Anti-Cancer Drug Programme~~ is the pre-planned sequence of treatment of ~~Chemotherapy~~ that may include one or more ~~Systemic Anti-Cancer Drug Regimens~~. The last live version of this item is available in the ~~??????~~ release of the NHS Data Model and Dictionary.

If the ~~PATIENT~~'s clinical situation changes, then subsequent treatment constitutes a new ~~Systemic Anti-Cancer Drug Programme~~. Access to this version can be obtained by emailing information.standards@nhs.net with "NHS Data Model and Dictionary - Archive Request" in the email subject line.

- ~~Where a curative programme is completed successfully but the PATIENT subsequently develops recurrent disease, further treatment will constitute a new Systemic Anti-Cancer Drug Programme.~~
- ~~Where a palliative treatment programme achieves the desired response but the PATIENT subsequently relapses requiring further treatment this will constitute a new Systemic Anti-Cancer Drug Programme.~~

~~For example, a PATIENT may receive four months of a taxane drug, the disease is thought to have stabilised and the treatment is stopped. Two months later progressive disease is identified and the PATIENT is started on the Capecitabine drug, this constitutes a new Systemic Anti-Cancer Drug Programme.~~

- ~~Where a palliative treatment programme fails to achieve the desired response and is discontinued, with the formulation of a new treatment plan, further treatment will constitute a new Systemic Anti-Cancer Drug Programme.~~

~~For example, where a PATIENT remains continuously on Chemotherapy for a prolonged period, having a sequence of palliative regimens each in an attempt to control disease this would constitute a series of Systemic Anti-Cancer Drug Programmes, as it was not a planned sequence.~~

~~Note: In the management of the majority of adult solid tumours, the Chemotherapy Programme and Chemotherapy Regimen will be the same. Particularly in the management of haematological and paediatric tumours, two or more recognised Chemotherapy Regimens may be given concurrently or sequentially and constitute a single Chemotherapy Programme.~~

SYSTEMIC ANTI-CANCER THERAPY DRUG PROGRAMME (RETIRED) renamed from SYSTEMIC ANTI-CANCER DRUG PROGRAMME

Change to Supporting Information: Changed Name, Description, status to Retired

- Changed Name from Data_Dictionary.NHS_Business_Definitions.S.Systemic_Anti-Cancer_Drug_Programme to Retired.Data_Dictionary.NHS_Business_Definitions.S.Systemic_Anti-Cancer_Therapy_Drug_Programme
- Changed Description
- Retired Systemic Anti-Cancer Drug Programme

SYSTEMIC ANTI-CANCER THERAPY DRUG REGIMEN renamed from SYSTEMIC ANTI-CANCER DRUG REGIMEN

Change to Supporting Information: Changed Name, Description

~~A **Systemic Anti-Cancer Drug Regimen** (also known as a **Chemotherapy Regimen**) is an **Anti-Cancer Drug Regimen**, which is a **CLINICAL INTERVENTION**. A **Systemic Anti-Cancer Therapy Drug Regimen** is an **Anti-Cancer Drug Regimen**.~~

~~Some **Systemic Anti-Cancer Drug Regimens** have alternating repeating elements and some have consecutive sets of repeating elements. In all these cases the term “cycle” (**Systemic Anti-Cancer Drug Cycle**) would be equally valid and help to identify the stage of progress of the **PATIENT** through **Chemotherapy**. A **Systemic Anti-Cancer Therapy Drug Regimen** identifies a standard for a combination of drugs (or single drug) given in a planned schedule.~~

~~A **Systemic Anti-Cancer Drug Regimen** identifies a standard or trial group of drugs given in a specific way and may include other instruction concerning the timing and parameters of treatment. A **Systemic Anti-Cancer Therapy Drug Regimen** can be standard, part of a **CLINICAL TRIAL** or specifically designed for an individual treatment plan.~~

~~The **Systemic Anti-Cancer Drug Regimen** title will be as agreed by the **Oncology Regimen Steering Group** and this will inform the **OPCS-4** **Guidance for Clinical Coders**. The **Systemic Anti-Cancer Therapy Drug Regimen** title will be as agreed by the **Systemic Anti-Cancer Therapy** team and an **NHS support Pharmacists** group as they maintain the regimen list and this will inform the **OPCS Classification of Interventions and Procedures** **Guidance**.~~

~~In the management of the majority of adult solid tumours, the **Chemotherapy Programme** and **Chemotherapy Regimen** will be the same. Particularly in the management of haematological and paediatric tumours, two or more recognised **Systemic Anti-Cancer Drug Regimens** may be given concurrently or sequentially and constitute a single **Chemotherapy Programme**.~~

SYSTEMIC ANTI-CANCER THERAPY DRUG REGIMEN renamed from **SYSTEMIC ANTI-CANCER DRUG REGIMEN**

Change to Supporting Information: Changed Name, Description

- Changed Name from **Data_Dictionary.NHS_Business_Definitions.S.Systemic_Anti-Cancer_Drug_Regimen** to **Data_Dictionary.NHS_Business_Definitions.S.Systemic_Anti-Cancer_Therapy_Drug_Regimen**
- Changed Description

SYSTEMIC ANTI-CANCER THERAPY SERVICE

Change to Supporting Information: New Supporting Information

A **Systemic Anti-Cancer Therapy Service is a **SERVICE**.**

A **Systemic Anti-Cancer Therapy Service encompasses all types of treatments for **PATIENTS** who require **Systemic Anti-Cancer Therapy** or **Immunotherapy**.**

This covers both solid **Tumour oncology and haemato-oncology **SERVICES**.**

This supporting information is also known by these names:

Context	Alias
plural	Systemic Anti-Cancer Therapy Services

XML SCHEMA TRUD DOWNLOAD

Change to Supporting Information: Changed Dataset, Description

Background:

XML Schemas and Release Notes can be downloaded from [Technology Reference Data Update Distribution \(TRUD\)](#).

In order to access the XML Schemas and Release Notes on [Technology Reference Data Update Distribution \(TRUD\)](#), users will be required to:

- Create a [TRUD](#) account at: [TRUD: Account Creation](#) (if an account does not currently exist. This only has to be done once to access any XML Schema)
- Log into [TRUD](#) at: [TRUD: Log in](#)
- Access [NHS Data Model and Dictionary: DD XML Schemas](#) and subscribe to the XML Schema to be downloaded
- Accept the licence and request the subscription (an email will be sent immediately to confirm that the request has been accepted and the files can be downloaded, which avoids any delays)
- Once the "Subscription accepted" email has been received, download the zip file from [NHS Data Model and Dictionary: DD XML Schemas](#).

Once an XML Schema has been added to [TRUD](#), users who have subscribed to that item will be automatically notified by email of any updates to that area, for example, new versions, retirements etc.

XML Schema Download:

XML Schemas and Release Notes for the following Data Sets in the NHS Data Model and Dictionary can be downloaded from [Technology Reference Data Update Distribution \(TRUD\)](#) at: [NHS Data Model and Dictionary: DD XML Schemas](#).

- [Cancer Outcomes and Services Data Set \(COSDS\)](#)
- [Community Services Data Set \(CSDS\)](#)
- [Commissioning Data Set \(CDS\) V6-2](#)
- [Commissioning Data Set \(CDS\) V6-2-1](#)
- [Commissioning Data Set \(CDS\) V6-2-2](#)
- [Diagnostic Imaging Data Set \(DIDS\)](#)
- [HIV and AIDS Reporting Data Set \(HARS\)](#)
- [Information Sharing to Tackle Violence Minimum Data Set \(ISTVDS\)](#)
- [Maternity Services Data Set \(MSDS\)](#)
- [National Cancer Waiting Times Monitoring Data Set \(NCWTMDS\)](#)
- ~~[NHS Health Checks Data Set \(NHSHC\)](#)~~
- ~~[Systemic Anti-Cancer Therapy Data Set \(SACT\)](#)~~
- [NHS Health Checks Data Set \(NHSHC\)](#).

For supplementary information on the XML Schema Publication and Download, see the [NHS Data Model and Dictionary Service](#) part of the [NHS Digital](#) website at: [Policies: XML Schema Publication and Download guidance](#).

ACTIVITY DRUG

Change to Class: Changed Attributes

Attributes of this Class are:

ANTENATAL STEROID COURSE COMPLETION STATUS
CLINICAL TRIAL MEDICATION ADMINISTERED NAME
MEDICAL INDUCTION OF LABOUR AGENT
NEONATAL RESUSCITATION AGENT
SYSTEMIC ANTI-CANCER DRUG NAME
[SYSTEMIC ANTI-CANCER THERAPY ACTUAL DOSE](#)
[SYSTEMIC ANTI-CANCER THERAPY DRUG NAME](#)
[SYSTEMIC ANTI-CANCER THERAPY TOXICITY MODIFICATION INDICATOR](#)

CHEMOTHERAPY PRESCRIPTION (RETIRED) renamed from **CHEMOTHERAPY PRESCRIPTION**

Change to Class: Changed Attributes, Name, Description, status to Retired, Supertype

~~A subtype of **PREScription**. This item has been retired from the NHS Data Model and Dictionary.~~

~~**CHEMOTHERAPY PRESCRIPTION** is a request for the administration of **Chemotherapy** to a **PATIENT**. The last live version of this item is available in the ?????? release of the NHS Data Model and Dictionary.~~

Access to this version can be obtained by emailing information.standards@nhs.net with "NHS Data Model and Dictionary - Archive Request" in the email subject line.

CHEMOTHERAPY PRESCRIPTION (RETIRED) renamed from **CHEMOTHERAPY PRESCRIPTION**

Change to Class: Changed Attributes, Name, Description, status to Retired, Supertype

Attributes of this Class are:

~~NUMBER OF SYSTEMIC ANTI-CANCER THERAPY CYCLES PLANNED~~

This class has no attributes.

CHEMOTHERAPY PRESCRIPTION (RETIRED) renamed from **CHEMOTHERAPY PRESCRIPTION**

Change to Class: Changed Attributes, Name, Description, status to Retired, Supertype

- **Changed Attributes**
- **Changed Name from `Data_Dictionary.Classes.C.CHEMOTHERAPY_PRESCRIPTION` to `Retired.Data_Dictionary.Classes.C.CHEMOTHERAPY_PRESCRIPTION`**
- **Changed Description**
- **Retired **CHEMOTHERAPY PRESCRIPTION****
- **Changed Supertype from `Data_Dictionary.Classes.P.PREScription` to null**

CLINICAL INTERVENTION

Change to Class: Changed Attributes

Attributes of this Class are:

ABDOMINAL XRAY PERFORMED REASON
ABDOMINAL XRAY PERFORMED TO INVESTIGATE ABDOMINAL SIGNS INDICATOR
ABLATIVE THERAPY TYPE
ACCIDENT AND EMERGENCY INVESTIGATION
ACCIDENT AND EMERGENCY TREATMENT
ADDITIONAL UNPLANNED PROCEDURE REQUIRED INDICATOR
ADJUNCTIVE THERAPY TYPE
ANAESTHESIA TYPE IN LABOUR AND DELIVERY
ANAESTHETIC METHOD TYPE FOR DIALYSIS ACCESS CONSTRUCTION
ANAESTHETIC TYPE FOR JOINT REPLACEMENT
~~ANTI-CANCER REGIMEN NUMBER~~
ANTIRETROVIRAL THERAPY DRUG REGIMEN GROUP CODE
ANTIRETROVIRAL THERAPY HOME DELIVERY INDICATOR
ARTERIOVENOUS GRAFT MATERIAL TYPE
ARTHROPLASTY REVISION TYPE FOR HIP KNEE AND ANKLE REPLACEMENT
ARTHROPLASTY REVISION TYPE FOR SHOULDER AND ELBOW REPLACEMENT
ARTIFICIAL RUPTURE OF MEMBRANES REASON CODE
ASA PHYSICAL STATUS CLASSIFICATION SYSTEM CODE
ASSOCIATED PROCEDURE TYPE FOR ANKLE REPLACEMENT
BIOLOGICAL GLENOID RESURFACING TYPE FOR SHOULDER REPLACEMENT
BIOPSY TYPE FOR CENTRAL NERVOUS SYSTEM TUMOURS

BLOOD FLOW RATE
BLOOD TRANSFUSION PRODUCT TYPE
BLOOD TRANSFUSION TYPE
BLOOD TRANSFUSION UNITS TRANSFUSED
BONE GRAFT INDICATOR FOR JOINT REPLACEMENT
BONE GRAFT SOURCE FOR JOINT REPLACEMENT
BONE GRAFT STRUCTURE FOR JOINT REPLACEMENT
BONE GRAFT TYPE FOR REVISION ANKLE REPLACEMENT
BRACHYTHERAPY TYPE
BREAST ASSESSMENT OUTCOME
BREAST SCREENING TEST OUTCOME
CANCER CARE SETTING FOR TREATMENT
CANCER IMAGING MODALITY
CANCER IMAGING OUTCOME
CANCER TREATMENT MODALITY
CARDIOPULMONARY EXERCISE TEST TYPE
CEMENT REMOVAL INDICATOR FOR JOINT REPLACEMENT
CHEMICAL THROMBOPROPHYLAXIS REGIME TYPE FOR JOINT REPLACEMENT
~~CHEMO RADIATION INDICATOR~~
~~CHEMOTHERAPY ACTUAL DOSE~~
CHEST DRAIN IN SITU INDICATOR
CLINICAL INTERVENTION TEXT STRING
CLINICAL INTERVENTION TYPE
CLINICAL INVESTIGATION NOT PERFORMED REASON CODE FOR MATERNITY
COLPOSCOPY PRIME PROCEDURE TYPE
CO MORBIDITY ADJUSTMENT INDICATOR
COMPLICATION TYPE FOR RENAL DIALYSIS ACCESS
COMPONENT REMOVAL INDICATOR FOR JOINT REPLACEMENT
COMPUTER GUIDED SURGERY INDICATOR FOR JOINT REPLACEMENT
CONTINUOUS INFUSION OF PULMONARY VASODILATOR RECEIVED INDICATOR
CONTINUOUS POSITIVE AIRWAY PRESSURE DELIVERY MODE
CONTRACEPTION METHOD STATUS
CYTOLOGY SCREENING ACTION TYPE
DEINFIBULATION UNDERTAKEN REASON
DELIVERED IN WATER INDICATOR
DELIVERY INSTRUMENT TYPE
DELIVERY OF PLACENTA METHOD
DIEPOXYBUTANE TEST RESULT
DRUG ADMINISTRATION DURATION
DRUG ADMINISTRATION STATUS
DRUG DAYS SUPPLY
DRUG DOSAGE AND ADMIN SPECIFICATION
DRUG IDENTIFICATION
DRUG INFORMATION COMMENT
DRUG INFORMATION TYPE
DRUG QUANTITY SUPPLIED
DRUG REGIMEN ACRONYM
~~DRUG TREATMENT INTENT~~
ENDOSCOPIC OR RADIOLOGICAL COMPLICATION TYPE
ENDOSCOPIC PROCEDURE TYPE
ENTERAL FEEDING METHOD
ENTERAL FEED TYPE GIVEN
EPISIOTOMY PERFORMED REASON CODE
EXCISION TYPE FOR CENTRAL NERVOUS SYSTEM TUMOURS

FETAL ORDER
FIRST ANTIRETROVIRAL THERAPY IN THE UNITED KINGDOM INDICATOR
~~FIRST DEFINITIVE TREATMENT PROVIDED~~
FIXATION TYPE FOR ELBOW REPLACEMENT
FIXATION TYPE FOR SHOULDER REPLACEMENT
FORMULA MILK OR MILK FORTIFIER TYPE
FRACTION NUMBER
GERMLINE GENETIC TEST TYPE OFFERED
HIP JOINT SURGERY PATIENT POSITION
HUMAN PAPILLOMAVIRUS VACCINATION DOSE GIVEN
IMAGE GUIDED SURGERY INDICATOR
IMAGING ANATOMICAL SITE
IMAGING INTERVENTION INDICATOR
IMAGING MODALITY
IMAGING OR RADIODIAGNOSTIC EVENT INDICATION CODE FOR RENAL CARE
INFECTION CULTURE TEST INDICATOR
INTERVENTION SESSION TYPE FOR STOP SMOKING
INTERVENTION SETTING TYPE FOR STOP SMOKING
INTRAPARTUM ANTIBIOTICS GIVEN INDICATOR
INTRAVESICAL CHEMOTHERAPY RECEIVED INDICATOR
INTRAVESICAL IMMUNOTHERAPY RECEIVED INDICATOR
JOINT REPLACEMENT PATIENT PROCEDURE PERFORMED INDICATOR
JOINT REPLACEMENT REVISION REASON CODE FOR ANKLE
JOINT REPLACEMENT REVISION REASON CODE FOR ELBOW
JOINT REPLACEMENT REVISION REASON CODE FOR HIP
JOINT REPLACEMENT REVISION REASON CODE FOR KNEE
JOINT REPLACEMENT REVISION REASON CODE FOR SHOULDER
KIDNEY TRANSPLANTED CODE
LABOUR FIRST STAGE LENGTH
LABOUR OR DELIVERY ONSET METHOD
LABOUR SECOND STAGE LENGTH
LAPAROTOMY FOR NECROTISING ENTEROCOLITIS INDICATION CODE
LINER REMOVAL INDICATOR FOR JOINT REPLACEMENT
LIVER CANCER SURVEILLANCE SCAN INDICATOR
LIVER SURGERY PERFORMED TYPE
LIVER TRANSARTERIAL EMBOLISATION MATERIAL INJECTION TYPE
LIVER TRANSARTERIAL EMBOLISATION OF HEPATOCELLULAR CARCINOMA INDICATOR
MARGIN INVOLVED INDICATION CODE
MATERNAL CRITICAL INCIDENT TYPE
MECHANICAL THROMBOPROPHYLAXIS REGIME TYPE FOR JOINT REPLACEMENT
MECONIUM PRESENT IN LIQUOR INDICATOR
MINIMALLY INVASIVE SURGERY INDICATOR FOR JOINT REPLACEMENT
MORE THAN THREE RECTAL WASHOUTS RECEIVED INDICATOR
NEOADJUVANT THERAPY INDICATOR
NEONATAL RESUSCITATION METHOD
NEONATAL RESUSCITATION METHOD FOR NATIONAL NEONATAL DATA SET
NEPHRECTOMY TYPE
NEURODEVELOPMENTAL ASSESSMENT ALREADY TAKEN INDICATOR
NEWBORN HEARING INCOMPLETE REASON CODE
NEWBORN HEARING SCREENING TEST TYPE
NITRIC OXIDE GIVEN INDICATOR
NUMBER OF TELETHERAPY FIELDS
OBSERVATION SCHEME IN USE
OPPORTUNISTIC SCREENING TYPE

ORGAN OR TISSUE UNSUITABLE ORGAN CODE RENAL TRANSPLANT
PAIN RELIEF TYPE IN LABOUR AND DELIVERY
PARENTAL CONSENT TO ADMINISTER VITAMIN K INDICATOR
PARENTAL CONSENT TO POST MORTEM INDICATOR
PARENTERAL NUTRITION RECEIVED INDICATOR
PATHOLOGY INVESTIGATION PRIORITY
PATHOLOGY RESULT REPORTED DATE
PATIENT DIAGNOSIS TREATMENT PROVIDED INDICATION CODE FOR SEXUAL HEALTH SERVICE
PATIENT PROCEDURE PERFORMED INDICATOR
PATIENT PROCEDURE TYPE FOR PRIMARY ANKLE REPLACEMENT
PATIENT PROCEDURE TYPE FOR PRIMARY ELBOW REPLACEMENT
PATIENT PROCEDURE TYPE FOR PRIMARY HIP REPLACEMENT
PATIENT PROCEDURE TYPE FOR PRIMARY KNEE REPLACEMENT
PATIENT PROCEDURE TYPE FOR PRIMARY SHOULDER REPLACEMENT
PATIENT PROCEDURE TYPE FOR REVISION ANKLE REPLACEMENT
PATIENT PROCEDURE TYPE FOR REVISION ELBOW REPLACEMENT
PATIENT PROCEDURE TYPE FOR REVISION HIP REPLACEMENT
PATIENT PROCEDURE TYPE FOR REVISION KNEE REPLACEMENT
PATIENT PROCEDURE TYPE FOR REVISION SHOULDER REPLACEMENT
PATIENT SPECIFIC INSTRUMENTS INDICATOR FOR SHOULDER OR KNEE REPLACEMENT
PATIENT TREATED TO CHILDRENS CANCER AND LEUKAEMIA GROUP GUIDELINES INDICATOR
PERITONEAL DIALYSIS CATHETER INSERTION TECHNIQUE
PERITONEAL DIALYSIS CATHETER TYPE
PERITONEAL DIALYSIS TREATMENT REGIME
PLANE OF SURGICAL EXCISION TYPE
~~PLANNED TREATMENT CHANGE REASON~~
POST MORTEM CARRIED OUT INDICATOR
POST MORTEM CONFIRMED NECROTISING ENTEROCOLITIS DIAGNOSIS INDICATOR
POST MORTEM TYPE
PRETREATMENT PROSTATE BIOPSY TECHNIQUE TYPE
PREVIOUS BONY INFECTION INDICATOR OF TIBIA OR HINDFOOT FOR ANKLE REPLACEMENT
PREVIOUS FRACTURE OF INDEX JOINT INDICATOR FOR ANKLE REPLACEMENT
PREVIOUS INDEX JOINT SURGERY TYPE FOR ANKLE REPLACEMENT
PREVIOUS SURGERY TYPE FOR SHOULDER REPLACEMENT
PRIMARY INDUCTION CHEMOTHERAPY FAILURE INDICATOR
PRINCIPAL DIAGNOSTIC IMAGING TYPE
PROCEDURE RENAL DIALYSIS ACCESS REPAIR OR REVISION TYPE
PROCEDURE SCHEME IN USE
PROCEDURE SIDE RENAL DIALYSIS ACCESS CONSTRUCTION CODE
PROCEDURE SITE RENAL DIALYSIS ACCESS CONSTRUCTION CODE
PROSTATE NERVE SPARING SURGERY TYPE
RADICAL PROSTATECTOMY MARGIN STATUS
RADIOISOTOPE
RADIOTHERAPY ACTUAL DOSE
RADIOTHERAPY BEAM TYPE
RADIOTHERAPY INTENT
RADIOTHERAPY PRESCRIBED DOSE
RADIOTHERAPY TREATMENT MODALITY
REGIONAL ANAESTHETIC TECHNIQUE FOR CANCER
RELAPSE METHOD DETECTION TYPE
REMOVAL REASON TYPE FOR DIALYSIS ACCESS
RENAL DIALYSIS ACCESS TYPE
RENAL DIALYSIS SCHEDULE TYPE
RENAL TRANSPLANT FAILURE CAUSE CODE

RENAL TREATMENT MODALITY CHANGE REASON CODE
RENAL TREATMENT MODALITY CODE
RENAL TREATMENT PRIMARY SUPERVISION CODE
REPROLOGLE TUBE IN SITU INDICATOR
RESPIRATORY SUPPORT DEVICE TYPE FOR NATIONAL NEONATAL DATA SET
RESPIRATORY SUPPORT MODE FOR NATIONAL NEONATAL DATA SET
RESULT SENT DIRECT
RETINOPATHY OF PREMATURITY SCREENING OUTCOME STATUS CODE
REVISION PROCEDURE TYPE FOR ANKLE REPLACEMENT
REVISION PROCEDURE TYPE FOR ELBOW REPLACEMENT
REVISION PROCEDURE TYPE FOR HIP REPLACEMENT
REVISION PROCEDURE TYPE FOR KNEE REPLACEMENT
REVISION PROCEDURE TYPE FOR SHOULDER REPLACEMENT
ROTATOR CUFF CONDITION FOR SHOULDER REPLACEMENT
ROTATOR CUFF REPAIRED INDICATOR FOR SHOULDER REPLACEMENT
ROTATOR CUFF REPAIR TYPE FOR SHOULDER REPLACEMENT
RUPTURE OF MEMBRANES METHOD
SARCOMA SURGICAL MARGIN
SENTINEL LYMPH NODE BIOPSY TYPE
SIGNIFICANT MATERNAL PYREXIA IN LABOUR INDICATOR
STEM CELL INFUSION DONOR TYPE
STEM CELL INFUSION SOURCE CODE
STEM CELL TRANSPLANT CONDITIONING REGIMEN
STERIODS GIVEN DURING PREGNANCY TO MATURE FETAL LUNGS INDICATOR
STOMA PRESENT INDICATOR
SURFACTANT GIVEN INDICATOR
SURGICAL ACCESS TYPE
SURGICAL APPROACH FOR PRIMARY HIP REPLACEMENT
SURGICAL APPROACH FOR PRIMARY KNEE REPLACEMENT
SURGICAL APPROACH FOR PRIMARY OR REVISION ANKLE REPLACEMENT
SURGICAL APPROACH FOR PRIMARY OR REVISION ELBOW REPLACEMENT
SURGICAL APPROACH FOR PRIMARY OR REVISION SHOULDER REPLACEMENT
SURGICAL APPROACH FOR REVISION HIP REPLACEMENT
SURGICAL APPROACH FOR REVISION KNEE REPLACEMENT
SURGICAL COMPLICATION TYPE
SURGICAL PALLIATION TYPE
SURVEILLANCE TECHNIQUE DIALYSIS TYPE
~~SYSTEMIC ANTI CANCER THERAPY DRUG ROUTE OF ADMINISTRATION~~
SYSTEMIC ANTI CANCER THERAPY CURATIVE TREATMENT COMPLETED AS PLANNED INDICATOR
~~SYSTEMIC ANTI CANCER THERAPY PROGRAMME NUMBER~~
SYSTEMIC ANTI CANCER THERAPY CURATIVE TREATMENT NOT COMPLETED OUTCOME REASON
~~SYSTEMIC ANTI CANCER THERAPY REGIMEN MODIFICATION INDICATOR~~
SYSTEMIC ANTI CANCER THERAPY DRUG REGIMEN MODIFICATION INDICATOR FOR DOSE
REDUCTION
SYSTEMIC ANTI CANCER THERAPY DRUG REGIMEN TREATMENT INTENT
SYSTEMIC ANTI CANCER THERAPY DRUG ROUTE OF ADMINISTRATION
SYSTEMIC ANTI CANCER THERAPY NON CURATIVE TREATMENT PATIENT BENEFIT INDICATOR
THERAPY TYPE FOR IMPROVING ACCESS TO PSYCHOLOGICAL THERAPIES
TRACHEOSTOMY TUBE IN SITU INDICATOR
TREATMENT TYPE FOR NECROTISING ENTEROCOLITIS
TREATMENT TYPE FOR PATENT DUCTUS ARTERIOSUS
UNTOWARD INTRAOPERATIVE EVENT CODE FOR ANKLE REPLACEMENT
UNTOWARD INTRAOPERATIVE EVENT CODE FOR ELBOW REPLACEMENT
UNTOWARD INTRAOPERATIVE EVENT CODE FOR HIP REPLACEMENT

UNTOWARD INTRAOPERATIVE EVENT CODE FOR KNEE REPLACEMENT
UNTOWARD INTRAOPERATIVE EVENT CODE FOR SHOULDER REPLACEMENT
VASCULAR LINE TYPE IN SITU
VISUAL INSPECTION CONFIRMED NECROTISING ENTEROCOLITIS DURING LAPAROTOMY INDICATOR
VITAMIN K ADMINISTERED INDICATOR
VITAMIN K ROUTE OF ADMINISTRATION

PERFORMANCE STATUS

Change to Class: Changed Attributes

Attributes of this Class are:

PERFORMANCE STATUS FOR ADULTS
~~PERFORMANCE STATUS FOR YOUNG PERSON~~

PLANNED ACTIVITY

Change to Class: Changed Attributes

Attributes of this Class are:

K PLANNED ACTIVITY SEQUENCE NUMBER
DECISION TO TREAT DATE
~~FIRST DEFINITIVE TREATMENT PLANNED~~
FURTHER ASSESSMENT TYPE FOR NHS HEALTH CHECK
INTENDED PROCEDURE STATUS
PLANNED CANCER TREATMENT TYPE
PLANNED SERVICE DESCRIPTION
RADIOLOGY INVESTIGATION PLAN STATUS
RADIOLOGY INVESTIGATION STATUS REASON

PRESCRIPTION

Change to Class: Changed Description

A subtype of [SERVICE REQUEST](#).

A request for the dispensing of one or more items or [SERVICE](#) to a [PATIENT](#).

Subtypes of [PRESCRIPTION](#) are:

- [CHEMOTHERAPY PRESCRIPTION](#)
 - [RADIOTHERAPY PRESCRIPTION](#).
-

UNIT OF MEASUREMENT

Change to Class: Changed Attributes

Attributes of this Class are:

[OTHER UNIT OF MEASUREMENT DESCRIPTION FOR SYSTEMIC ANTI CANCER THERAPY](#)
UCUM UNIT OF MEASUREMENT
UNIT OF MEASUREMENT
[UNIT OF MEASUREMENT FOR SYSTEMIC ANTI CANCER THERAPY](#)

ACTIVITY DATE

Change to Attribute: Changed Dataset

Any **DATE** that is of relevance to an **ACTIVITY**.

The specific nature of the **DATE** will be identified by the **ACTIVITY DATE TYPE**.

ACTIVITY IDENTIFIER

Change to Attribute: Changed Dataset

A unique number or set of characters that is applicable to only one **ACTIVITY** for a **PATIENT** within an **Organisation**.

ADJUNCTIVE THERAPY TYPE

Change to Attribute: Changed Dataset

The type of **Adjunctive Therapy** given to a **PATIENT** during a **Cancer Care Spell**.

National Codes:

- 1 [Adjuvant Therapy](#)
 - 2 [Neoadjuvant Therapy](#)
-

ANTI-CANCER REGIMEN NUMBER (RETIRED) renamed from ANTI-CANCER REGIMEN NUMBER

Change to Attribute: Changed Name, Dataset, Description, status to Retired

~~The number of the **Anti-Cancer Drug Regimen**, for example, a **Systemic Anti-Cancer Drug Regimen**. This item has been retired from the NHS Data Model and Dictionary.~~

~~**Anti-Cancer Drug Regimens** are numbered according to their chronological order of commencement in the treatment programme. The last live version of this item is available in the ?????? release of the NHS Data Model and Dictionary.~~

~~Access to this version can be obtained by emailing information.standards@nhs.net with "NHS Data Model and Dictionary - Archive Request" in the email subject line.~~

ANTI-CANCER REGIMEN NUMBER (RETIRED) renamed from ANTI-CANCER REGIMEN NUMBER

Change to Attribute: Changed Name, Dataset, Description, status to Retired

- Changed Name from `Data_Dictionary.Attributes.A.Ana.ANTI-CANCER_REGIMEN_NUMBER` to `Retired.Data_Dictionary.Attributes.A.ANTI-CANCER_REGIMEN_NUMBER`
 - null
 - Changed Description
 - Retired ANTI-CANCER REGIMEN NUMBER
-

CHEMO-RADIATION INDICATOR (RETIRED) renamed from CHEMO-RADIATION INDICATOR

Change to Attribute: Changed Name, Dataset, Description, status to Retired

~~An indication of whether a regimen, such as a **Systemic Anti-Cancer Drug Regimen**, is given as part of a combined treatment with radiation.~~

National Codes: This item has been retired from the NHS Data Model and Dictionary.

Y Yes
N No

The last live version of this item is available in the ?????? release of the NHS Data Model and Dictionary.

Access to this version can be obtained by emailing information.standards@nhs.net with "NHS Data Model and Dictionary - Archive Request" in the email subject line.

CHEMO-RADIATION INDICATOR (RETIRED), renamed from CHEMO-RADIATION INDICATOR

Change to Attribute: Changed Name, Dataset, Description, status to Retired

- Changed Name from Data_Dictionary.Attributes.C.Ce.CHEMO-RADIATION_INDICATOR to Retired.Data_Dictionary.Attributes.C.CHEMO-RADIATION_INDICATOR
 - null
 - Changed Description
 - Retired CHEMO-RADIATION INDICATOR
-

CLINICAL CLASSIFICATION CODE

Change to Attribute: Changed Dataset

A unique clinical classification identifier for a [CODED CLINICAL ENTRY](#).

This could be [OPCS Classification of Interventions and Procedures \(OPCS-4\)](#) codes or [International Classification of Diseases \(ICD\)](#) codes.

See [Clinical Coding](#) for further information about the types of [CODED CLINICAL ENTRIES](#).

CLINICAL INTERVENTION TEXT STRING

Change to Attribute: Changed Dataset

A free text string to record information relating to a [CLINICAL INTERVENTION](#).

CLINICAL INTERVENTION TYPE

Change to Attribute: Changed Description

The type of [CLINICAL INTERVENTION](#).

National Codes:

- 01 Anaesthetic Service (Retired November 2013)
- 02 [Anti-Cancer Drug Cycle](#)
- 02 [Anti-Cancer Drug Cycle \(Retired 1 September 2019 \)](#)
- 03 Anti-Cancer Drug Fraction (Retired 1 January 2013)
- 04 [Anti-Cancer Drug Programme](#)
- 04 [Anti-Cancer Drug Programme \(Retired 1 September 2019 \)](#)
- 05 [Anti-Cancer Drug Regimen](#)
- 06 [Brachytherapy Treatment Course](#)
- 07 Contraceptive Service (Retired November 2013)
- 08 Dental Haemorrhage Service (Retired November 2013)
- 09 Dental Treatment (Retired 01 April 2014)

10 Drug Dosage and Administration (Retired 1 January 2013)
11 [Drug Treatment](#)
12 Emergency Treatment Service (Retired November 2013)
13 Endocrine Therapy (Retired 1 January 2013)
14 [Fraction](#)
15 [Primary Hip Replacement Surgery](#)
16 [Imaging or Radiodiagnostic Event](#)
17 [Immunisation Dose Given](#)
18 [Joint Replacement Surgery](#)
19 [Primary Knee Replacement Surgery](#)
20 [Labour and Delivery](#)
21 Lithotripsy Course Attendance (Retired 1 April 2014)
22 Maternity Medical Service (Retired November 2013)
23 Minor Surgery Procedure (Retired November 2013)
24 Pathology Laboratory Investigation (Retired January 2015)
25 [Patient Procedure](#)
26 [Post Mortem](#)
27 [Radiotherapy Treatment Course](#)
28 Screening Test (Retired November 2013)
29 Teletherapy Treatment Course (Retired 1 April 2014)
30 Test Of Immunity (Retired November 2013)
31 Therapy After Discharge (Retired July 2012)
32 [Thromboprophylaxis Regime](#)
33 Unsealed Source Treatment Course (Retired 1 April 2014)
34 Vaccination Service (Retired November 2013)
35 Vasectomy Performed (Retired November 2013)
36 [Clinical Investigation](#)
37 ~~[Systemic Anti-Cancer Drug Cycle](#)~~
38 ~~[Systemic Anti-Cancer Drug Programme](#)~~
39 ~~[Systemic Anti-Cancer Drug Regimen](#)~~
37 [Systemic Anti-Cancer Therapy Drug Cycle](#)
38 [Systemic Anti-Cancer Therapy Drug Programme \(Retired 1 September 2019 \)](#)
39 [Systemic Anti-Cancer Therapy Drug Regimen](#)
40 [Chemotherapy](#)
41 [Cytotoxic Chemotherapy](#)
42 [Hormone Therapy](#)
43 [Immunotherapy](#)
44 Diagnostic Imaging (Retired January 2015)
45 6 - 8 Week Physical Examination (Retired January 2015)
46 Ultrasound Scan In Pregnancy (Retired January 2015)
47 Newborn Physical Examination (Retired January 2015)
48 [Biological Therapy](#)
49 [Brachytherapy](#)
50 [Chemoradiotherapy](#)
51 [Cryotherapy](#)
52 [High Intensity Focused Ultrasound](#)
53 [Hyperbaric Oxygen Therapy](#)
54 [Laser Treatment](#)
55 [Light Therapy](#)
56 [Photodynamic Therapy](#)
57 [Proton Therapy](#)
58 [Psoralen and Ultraviolet A Therapy](#)
59 [Radiofrequency Ablation](#)
60 [Radioisotope Therapy](#)
61 [Radiosurgery](#)
62 [Radiotherapy](#)

63	Teletherapy
64	Tissue Typing (Retired January 2015)
65	Blood Transfusion
66	Renal Dialysis
67	Antiretroviral Therapy
68	Drug Regimen
69	Ablative Therapy
70	Laparoscopy
71	Primary Ankle Replacement Surgery
72	Revision Ankle Replacement Surgery
73	Primary Elbow Replacement Surgery
74	Revision Elbow Replacement Surgery
75	Revision Hip Replacement Surgery
76	Revision Knee Replacement Surgery
77	Primary Shoulder Replacement Surgery
78	Revision Shoulder Replacement Surgery
79	Oxygen Therapy
80	Therapeutic Hypothermia
81	Parenteral Nutrition
82	Enteral Feeding
83	Radiotherapy Exposure
84	Mental Health Treatment (Retired 01 January 2016)
85	Restrictive Intervention
86	Adjunctive Therapy

CLINICAL INVESTIGATION RESULT VALUE

Change to Attribute: Changed Dataset

The recorded value for a [CLINICAL INVESTIGATION RESULT ITEM](#).

A [UNIT OF MEASUREMENT](#) may be recorded for a [CLINICAL INVESTIGATION RESULT VALUE](#).

CLINICAL TERMINOLOGY CODE

Change to Attribute: Changed Dataset

A unique clinical terminology identifier for a [CODED CLINICAL ENTRY](#).

This could be [Read Coded Clinical Terms](#), [SNOMED CT](#) concepts or defined in the [National Interim Clinical Imaging Procedure Code Set](#).

See [Clinical Coding](#) for further information about the types of [CODED CLINICAL ENTRIES](#).

Note: [SNOMED CT](#) is the Information Standard for clinical terminology for use within the NHS; it is planned that in time this will be the only terminology used by the NHS.

CLINICAL TRIAL INDICATOR

Change to Attribute: Changed Dataset

An indication of whether an individual episode of care is being delivered to a [PATIENT](#) as part of a [CLINICAL TRIAL](#).

National Codes:

- 01 [PATIENT](#) is taking part in a [CLINICAL TRIAL](#)
- 02 [PATIENT](#) is not taking part in a [CLINICAL TRIAL](#)

CO-MORBIDITY ADJUSTMENT INDICATOR

Change to Attribute: Changed Dataset, Description

~~An indication of whether a [PATIENT](#)'s overall physical state (i.e. other diseases and conditions) was a significant factor in deciding on the type of [Anti-Cancer Drug Regimen](#), for example a [Systemic Anti-Cancer Drug Regimen](#), or influencing whether a dose was reduced, or the time between cycles increased at the commencement of the [Anti-Cancer Drug Regimen](#).~~ An indication of whether a [PATIENT](#)'s co-morbidity (overall physical state) was a significant factor in adjusting the [Anti-Cancer Drug Regimen](#), type, dose or treatment interval.

National Codes:

- Y Yes
- N No
- Y Yes - a [PATIENT](#)'s co-morbidity (overall physical state) was a significant factor
- N No - a [PATIENT](#)'s co-morbidity (overall physical state) was not a significant factor

CONSULTANT CODE

Change to Attribute: Changed Dataset

A code uniquely identifying a [CONSULTANT](#).

The [CONSULTANT CODE](#) is derived from either the [GENERAL MEDICAL COUNCIL REFERENCE NUMBER](#) for [GENERAL MEDICAL PRACTITIONERS](#), or the [GENERAL DENTAL COUNCIL REGISTRATION NUMBER](#) for [GENERAL DENTAL PRACTITIONERS](#) (where the dentist doesn't have a [GENERAL MEDICAL COUNCIL REFERENCE NUMBER](#)).

For [GENERAL MEDICAL PRACTITIONERS](#) working as [CONSULTANTS](#), the [GENERAL MEDICAL PRACTITIONER](#)'s [GENERAL MEDICAL COUNCIL REFERENCE NUMBER](#) should be used, see data item note for [GENERAL MEDICAL PRACTITIONER \(SPECIFIED\)](#).

For [GENERAL DENTAL PRACTITIONERS](#) working as a:

- Hospital [CONSULTANT](#), the [GENERAL MEDICAL COUNCIL REFERENCE NUMBER](#) should be used, prefixed with "C"
- Dental [CONSULTANT](#):
 - Who does not have a [GENERAL MEDICAL COUNCIL REFERENCE NUMBER](#), the [GENERAL DENTAL COUNCIL REGISTRATION NUMBER](#) should be used, prefixed with "CD".
 - Where the [GENERAL MEDICAL COUNCIL REFERENCE NUMBER](#) or [GENERAL DENTAL COUNCIL REGISTRATION NUMBER](#) is not known, the default code should be used, see [CONSULTANT CODE](#) or [Organisation Data Service Default Codes](#).

Note: There are some overseas-qualified dentists who are not fully registered with the [General Dental Council](#) but enjoy what is called "Temporary Registration". These dentists are not currently in the scope of the Dental Consultant codes file published by the [Organisation Data Service](#) and will not be included.

Consultant Code format

Practitioner Code Type	Character Position								Allocated By	Allocated To	Known As	Notes
	1	2	3	4	5	6	7	8				

Hospital Consultant	C	0-9	0-9	0-9	0-9	0-9	0-9	0-9	NHS Digital	Hospital Consultants in England and Wales	Consultant Code	Derived from GENERAL MEDICAL COUNCIL REFERENCE NUMBER , prefixed with a C
Dental Consultant	C	D	0-9	0-9	0-9	0-9	0-9	0-9	NHS Digital	Dental Consultants in England and Wales	Dental Consultant Code	Derived from GENERAL DENTAL COUNCIL REGISTRATION NUMBER , prefixed with CD. Note that GENERAL DENTAL COUNCIL REGISTRATION NUMBERS vary in length. Filling zeros are used between the prefix and GENERAL DENTAL COUNCIL REGISTRATION NUMBER , where required, to maintain total length of 8 characters. For further information, please refer to the Dental Consultants in England (PDF) guidance document issued by the Organisation Data Service .

For NHS **PATIENTS** treated overseas, the commissioner of the overseas treatment is responsible for assuring that the overseas doctor is provided with a **GENERAL MEDICAL COUNCIL REFERENCE NUMBER**. In the case of overseas doctors, the default code C9999998 should only be used where no **GENERAL MEDICAL COUNCIL REFERENCE NUMBER** has been assigned.

All **Midwife Episodes** are identified in the Admitted Patient Care Commissioning Data Set (CDS) and **Hospital Episode Statistics** by a pseudo **MAIN SPECIALTY CODE**, 560, see [Main Specialty and Treatment Function Codes Table](#). A default code is used in the **CONSULTANT CODE** field to show that a **MIDWIFE** is the responsible professional. Note that the **MIDWIFE**'s own code is not used.

All **Nursing Episodes** are identified in the Admitted Patient Commissioning Data Set and **Hospital Episode Statistics** by a pseudo **MAIN SPECIALTY CODE**, 950, see [Main Specialty and Treatment Function Codes Table](#). A default code is used in the **CONSULTANT CODE** field to show that a **NURSE** is the responsible professional. Note that the **NURSE**'s own **Nursing and Midwifery Council** code is not used.

DECISION TO TREAT DATE

Change to Attribute: Changed Dataset, Description

The **DATE** on which a **Decision To Treat** is made.

~~For the cancer data sets, the **DECISION TO TREAT DATE** is the **DATE** that the consultation between the **PATIENT** and the clinician took place and a **Planned Cancer Treatment** was agreed.~~

ETHNIC CATEGORY CODE

Change to Attribute: Changed Dataset

The ethnicity of a **PERSON**, as specified by the **PERSON**.

Note: [ETHNIC CATEGORY](#) is the classification used for the 2001 census.

The [Office for National Statistics](#) has developed a further breakdown of the group from that given, which may be used locally.

National Codes:

White

- A British
- B Irish
- C Any other White background

Mixed

- D White and Black Caribbean
- E White and Black African
- F White and Asian
- G Any other mixed background

Asian or Asian British

- H Indian
- J Pakistani
- K Bangladeshi
- L Any other Asian background

Black or Black British

- M Caribbean
- N African
- P Any other Black background

Other Ethnic Groups

- R Chinese
- S Any other ethnic group

- Z Not stated

National code Z - Not Stated should be used where the [PERSON](#) has been given the opportunity to state their [ETHNIC CATEGORY](#) but chose not to.

FIRST DEFINITIVE TREATMENT PLANNED (RETIRED) renamed from **FIRST DEFINITIVE TREATMENT PLANNED**

Change to Attribute: Changed Name, Description, status to Retired

~~An indication that the [Planned Cancer Treatment](#) is the planned [First Definitive Treatment](#) or intervention to be given which is intended to remove or shrink a cancer tumour, to enable an anti-cancer treatment and/or to palliate the effects of the cancer.~~ This item has been retired from the **NHS Data Model and Dictionary**.

Classification: The last live version of this item is available in the **??????** release of the **NHS Data Model and Dictionary**.

- a- [First Definitive Treatment](#) planned
- b- not [First Definitive Treatment](#) planned

Access to this version can be obtained by emailing information.standards@nhs.net with "NHS Data Model and Dictionary - Archive Request" in the email subject line.

FIRST DEFINITIVE TREATMENT PLANNED (RETIRED) renamed from **FIRST DEFINITIVE TREATMENT PLANNED**

Change to Attribute: Changed Name, Description, status to Retired

- **Changed Name from Data_Dictionary.Attributes.F.FIRST_DEFINITIVE_TREATMENT_PLANNED to Retired.Data_Dictionary.Attributes.F.FIRST_DEFINITIVE_TREATMENT_PLANNED**
 - **Changed Description**
 - **Retired FIRST DEFINITIVE TREATMENT PLANNED**
-

FIRST DEFINITIVE TREATMENT PROVIDED (RETIRED) renamed from **FIRST DEFINITIVE TREATMENT PROVIDED**

Change to Attribute: Changed Name, Description, status to Retired

An indication that the [Planned Cancer Treatment](#) was provided as the [First Definitive Treatment](#) or intervention which was intended to remove or shrink a cancer tumour, to enable an anti-cancer treatment and/or to palliate the effects of the cancer. This item has been retired from the NHS Data Model and Dictionary.

Classification: The last live version of this item is available in the ?????? release of the NHS Data Model and Dictionary.

- a. [First Definitive Treatment](#) provided
- b. not [First Definitive Treatment](#) provided

Access to this version can be obtained by emailing information.standards@nhs.net with "NHS Data Model and Dictionary - Archive Request" in the email subject line.

FIRST DEFINITIVE TREATMENT PROVIDED (RETIRED) renamed from **FIRST DEFINITIVE TREATMENT PROVIDED**

Change to Attribute: Changed Name, Description, status to Retired

- **Changed Name from Data_Dictionary.Attributes.F.FIRST_DEFINITIVE_TREATMENT_PROVIDED to Retired.Data_Dictionary.Attributes.F.FIRST_DEFINITIVE_TREATMENT_PROVIDED**
 - **Changed Description**
 - **Retired FIRST DEFINITIVE TREATMENT PROVIDED**
-

LOCAL PATIENT IDENTIFIER

Change to Attribute: Changed Dataset

A number used to identify a [PATIENT](#) uniquely within a [Health Care Provider](#). It may be different from the [PATIENT](#)'s casenote number and may be assigned automatically by the computer system.

Where care for NHS patients is sub-commissioned in the independent sector or overseas, the NHS commissioner PAS Number should be used. If no NHS PAS Number has been assigned the independent sector or overseas PAS Number should be used.

MAIN SPECIALTY CODE

Change to Attribute: Changed Dataset

A unique code identifying each [MAIN SPECIALTY](#) designated by Royal Colleges. This is the same as the [NHS OCCUPATION CODES](#) describing specialties.

Specialties are divisions of clinical work which may be defined by body systems (dermatology), age (paediatrics), clinical technology (nuclear medicine), clinical function (rheumatology), group of diseases (oncology) or combinations of these factors. Only Specialty titles recognised by the Royal Colleges and Faculties should be used. This list is maintained by the General and Specialist

Medical Practice (Education, Training and Qualifications) Order 2003 and European Primary and Specialist Dental Qualifications Regulations 1998.

Each **CONSULTANT** should be assigned a **MAIN SPECIALTY** by the **Organisation** to which the **CONSULTANT** is contracted. For physicians and surgeons with a generalist component to their work, the **MAIN SPECIALTY** should be general medicine or general surgery. The hallmark of a general physician or general surgeon is the continued care of unselected emergency referrals. The **MAIN SPECIALTY** is specific to a **Health Care Provider**. If, for example, a **CONSULTANT** physician working in two **Health Care Providers** has a generalist component to the work in one and not the other, general medicine is only assigned as the **MAIN SPECIALTY** in the former case. **CONSULTANTS** in general medicine or general surgery may also have specialist interests and these should be recorded as well as the **MAIN SPECIALTY**.

The initial source of the information should be the designation on the **CONSULTANT**'s contract. This should be checked periodically against the work a **CONSULTANT** is actually doing so that the statistics can relate to a **CONSULTANT**'s current type of work.

The **MAIN SPECIALTY** only should be used for the purpose of producing Specialty costing statistics and for Workforce statistics where links with **ACTIVITY** and finance are required. Other specialist interests of **CONSULTANTS** may be recorded for workforce planning purposes.

This will be used to indicate the skill level of medical and dental employees.

Pseudo **MAIN SPECIALTY CODES** should be used in Commissioning Data Set messages for lead **CARE PROFESSIONALS** other than **CONSULTANT** medical and dental staff e.g. 560, 950 and 960.

The **MAIN SPECIALTY CODE** for **GENERAL PRACTITIONERS** is General Medical Practice or General Dental Practice.

Joint **Consultant Clinic ACTIVITY** should be recorded against the **MAIN SPECIALTY CODE** of the **CONSULTANT** managing the clinic.

For further information, contact **NHS Digital** by email at: enquiries@nhsdigital.nhs.uk with the subject "Main Specialty and Treatment Function Codes".

National Codes:

	Code	Main Specialty Title
Surgical Specialties		
	100	GENERAL SURGERY
	101	UROLOGY
	110	TRAUMA & ORTHOPAEDICS
	120	ENT
	130	OPHTHALMOLOGY
	140	ORAL SURGERY
	141	RESTORATIVE DENTISTRY
	142	PAEDIATRIC DENTISTRY
	143	ORTHODONTICS
	145	ORAL & MAXILLO FACIAL SURGERY
	146	ENDODONTICS
	147	PERIODONTICS
	148	PROSTHODONTICS
	149	SURGICAL DENTISTRY
	150	NEUROSURGERY
	160	PLASTIC SURGERY
	170	CARDIOTHORACIC SURGERY
	171	PAEDIATRIC SURGERY

	180	ACCIDENT & EMERGENCY
	191	PAIN MANAGEMENT (Retired 1 April 2004)
Medical Specialties		
	190	ANAESTHETICS
	192	CRITICAL CARE MEDICINE
	300	GENERAL MEDICINE
	301	GASTROENTEROLOGY
	302	ENDOCRINOLOGY
	303	CLINICAL HAEMATOLOGY
	304	CLINICAL PHYSIOLOGY
	305	CLINICAL PHARMACOLOGY
	310	AUDIOLOGICAL MEDICINE
	311	CLINICAL GENETICS
*	312	CLINICAL CYTOGENETICS and MOLECULAR GENETICS (Retired 1 April 2010)
	313	CLINICAL IMMUNOLOGY and ALLERGY
	314	REHABILITATION
	315	PALLIATIVE MEDICINE
	320	CARDIOLOGY
	321	PAEDIATRIC CARDIOLOGY
	325	SPORT AND EXERCISE MEDICINE
	326	ACUTE INTERNAL MEDICINE
	330	DERMATOLOGY
	340	RESPIRATORY MEDICINE (also known as thoracic medicine)
	350	INFECTIOUS DISEASES
	352	TROPICAL MEDICINE
	360	GENITOURINARY MEDICINE
	361	NEPHROLOGY
	370	MEDICAL ONCOLOGY
	371	NUCLEAR MEDICINE
	400	NEUROLOGY
	401	CLINICAL NEURO-PHYSIOLOGY
	410	RHEUMATOLOGY
	420	PAEDIATRICS
	421	PAEDIATRIC NEUROLOGY
	430	GERIATRIC MEDICINE
	450	DENTAL MEDICINE SPECIALTIES
	451	SPECIAL CARE DENTISTRY
	460	MEDICAL OPHTHALMOLOGY
†	500	OBSTETRICS and GYNAECOLOGY
	501	OBSTETRICS
	502	GYNAECOLOGY
	504	COMMUNITY SEXUAL AND REPRODUCTIVE HEALTH
	510	ANTENATAL CLINIC (Retired 1 April 2004)
	520	POSTNATAL CLINIC (Retired 1 April 2004)
	560	MIDWIFE EPISODE
	600	GENERAL MEDICAL PRACTICE
	601	GENERAL DENTAL PRACTICE
	610	MATERNITY FUNCTION (Retired 1 April 2004)
	620	OTHER THAN MATERNITY (Retired 1 April 2004)
Psychiatry		

	700	LEARNING DISABILITY
	710	ADULT MENTAL ILLNESS
	711	CHILD and ADOLESCENT PSYCHIATRY
	712	FORENSIC PSYCHIATRY
	713	PSYCHOTHERAPY
	715	OLD AGE PSYCHIATRY
Radiology		
	800	CLINICAL ONCOLOGY (previously RADIOTHERAPY)
	810	RADIOLOGY
Pathology		
	820	GENERAL PATHOLOGY
	821	BLOOD TRANSFUSION
	822	CHEMICAL PATHOLOGY
	823	HAEMATOLOGY
	824	HISTOPATHOLOGY
	830	IMMUNOPATHOLOGY
	831	MEDICAL MICROBIOLOGY AND VIROLOGY
	832	NEUROPATHOLOGY (Retired 1 April 2004)
	833	MEDICAL MICROBIOLOGY (also known as MICROBIOLOGY AND BACTERIOLOGY)
	834	MEDICAL VIROLOGY
Other		
	900	COMMUNITY MEDICINE
	901	OCCUPATIONAL MEDICINE
	902	COMMUNITY HEALTH SERVICES DENTAL
	903	PUBLIC HEALTH MEDICINE
	904	PUBLIC HEALTH DENTAL
	950	NURSING EPISODE
	960	ALLIED HEALTH PROFESSIONAL EPISODE
	990	JOINT CONSULTANT CLINICS (Retired 1 April 2004)

Notes:

†	Code 500 is not acceptable for Central Returns including Hospital Episode Statistics
*	Code 312 is retained for CONSULTANTS qualified in this Main Specialty prior to 1 April 2010.

NHS NUMBER

Change to Attribute: Changed Dataset

The **NHS NUMBER**, the primary identifier of a **PERSON**, is a unique identifier for a **PATIENT** within the NHS in England and Wales.

This will not vary by any **Organisation** of which a **PERSON** is a **PATIENT**.

It is mandatory to record the **NHS NUMBER**. There are exceptions, such as Accident and Emergency care, sexual health and major incidents, as defined in existing national policies.

The **NHS NUMBER** is 10 numeric digits in length. The tenth digit is a check digit used to confirm its validity. The check digit is validated using the Modulus 11 algorithm and the use of this algorithm is mandatory. There are 5 steps in the validation of the check digit:

Step 1 Multiply each of the first nine digits by a weighting factor as follows:

**Digit Position
(starting from the left) Factor:**

1	10
2	9
3	8
4	7
5	6
6	5
7	4
8	3
9	2

Step 2 Add the results of each multiplication together.

Step 3 Divide the total by 11 and establish the remainder.

Step 4 Subtract the remainder from 11 to give the check digit.

If the result is 11 then a check digit of 0 is used. If the result is 10 then the [NHS NUMBER](#) is invalid and not used.

Step 5 Check the remainder matches the check digit. If it does not, the [NHS NUMBER](#) is invalid.

Further guidance is available from the [NHS Digital](#) website at: [NHS Number](#).

Note:

This was [e-GIF](#) approved for use in NHS England.

[e-GIF](#) and the [Government Data Standards Catalogue](#) have been archived and are available for reference only.

NHS NUMBER STATUS INDICATOR CODE

**Change to Attribute: Changed Dataset
The trace status of the [NHS NUMBER](#).**

National Codes:

- 01 Number present and verified
- 02 Number present but not traced
- 03 Trace required
- 04 Trace attempted - No match or multiple match found
- 05 Trace needs to be resolved - ([NHS NUMBER](#) or [PATIENT](#) detail conflict)
- 06 Trace in progress
- 07 Number not present and trace not required
- 08 Trace postponed (baby under six weeks old)

NUMBER OF SYSTEMIC ANTI-CANCER THERAPY CYCLES PLANNED (RETIRED)_ renamed from NUMBER OF SYSTEMIC ANTI-CANCER THERAPY CYCLES PLANNED

Change to Attribute: Changed Name, Dataset, Description, status to Retired

~~The number of [Systemic Anti-Cancer Drug Cycles](#) specified in the [CHEMOTHERAPY PRESCRIPTION](#).~~ This item has been retired from the NHS Data Model and Dictionary.

~~This may be the number of [Systemic Anti-Cancer Drug Cycles](#) in the standard [Systemic Anti-Cancer Drug Regimen](#) or be modified by the prescriber. The last live version of this item is available in the ?????? release of the NHS Data Model and Dictionary.~~

Access to this version can be obtained by emailing information.standards@nhs.net with "NHS Data Model and Dictionary - Archive Request" in the email subject line.

NUMBER OF SYSTEMIC ANTI-CANCER THERAPY CYCLES PLANNED (RETIRED)_ renamed from **NUMBER OF SYSTEMIC ANTI-CANCER THERAPY CYCLES PLANNED**

Change to Attribute: Changed Name, Dataset, Description, status to Retired

- Changed Name from **Data Dictionary.Attributes.N.No.NUMBER_OF_SYSTEMIC_ANTI-CANCER_THERAPY_CYCLES_PLANNED** to **Retired.Data Dictionary.Attributes.N.NUMBER_OF_SYSTEMIC_ANTI-CANCER_THERAPY_CYCLES_PLANNED**
- null
- Changed Description
- Retired **NUMBER OF SYSTEMIC ANTI-CANCER THERAPY CYCLES PLANNED**

ORGANISATION CODE

Change to Attribute: Changed Dataset

[ORGANISATION CODE](#) will be replaced with [ORGANISATION IDENTIFIER](#), which is the most recent approved national information standard to describe the required definition.

An [ORGANISATION CODE](#) is a code which identifies an [Organisation](#) uniquely.

[ORGANISATION CODES](#) are managed by:

- [Organisation Data Service \(ODS\)](#)
- [NHS Prescription Services](#)
- [NHS Dental Services](#).

Notes:

- [Organisation Data Service](#) codes can be downloaded from [Technology Reference Data Update Distribution \(TRUD\)](#)
- [Organisation Data Service](#) contact details can be found at [Contact Details](#).

ORGANISATION CODING FRAMES

- All NHS [Organisations](#) are coded using coding frames, as shown in the tables below:

Character Position	1	2	3	4	5	6	7	8
Format	a/n	a/n	a/n	a/n	a/n	a/n	a/n	a/n
A Frame	Organisation Type Identifier	Organisation Identifier						

B Frame	Organisation Type Identifier	Organisation Identifier						
C Frame	Organisation Type Identifier	Organisation Identifier						
D Frame	Organisation Type Identifier	Organisation Identifier						
E Frame	Organisation Identifier							
F Frame	Organisation Type Identifier	Organisation Identifier						
G Frame	Organisation Type Identifier	Practice Identifier						
H Frame	Organisation Type Identifier	Organisation Identifier						
I Frame	Organisation Type Identifier	Organisation Identifier						
K Frame	Organisation Identifier							
L Frame	Organisation Type Identifier		Organisation Identifier	Organisation Type Identifier				
M Frame	Organisation and Organisation Type Identifier							
N Frame	Organisation Type Identifier		Organisation Identifier					

A Frame:

Example

Non NHS Organisation ([Independent Provider](#)) e.g. 8HA03

- **8 = Organisation Type Identifier**
 - **Remainder = Organisation Identifier**
-

B Frame:

Example

Local Service Provider e.g. LSP01

- **LSP = Organisation Type Identifier**
- **01 = Organisation Identifier**

Also:

Application Service Provider	e.g. YGM01
Education Establishment	e.g. YDF01
NHS Support Agency	e.g. YDD01

C Frame:

Example

[School](#) e.g. EE134290

- **EE = Organisation Type Identifier**
 - **Remainder = Organisation Identifier**
-

D Frame:

Example

[Care Trust](#) e.g. TAK

- **T = Organisation Type Identifier**
- **AK = Organisation Identifier**

Also:

Commissioning Support Unit (CSU) /	e.g. 0AA
Data Services for Commissioners Regional Office (DSCRO)	
High Level Health Geography, e.g. NHS England (Region Local Office)	e.g. Q72
Local Health Board (Wales)	e.g. 7A1
NHS Trust	e.g. RH8
Justice Organisation	e.g. VAA

E Frame:

Example

[Government Office Region \(GOR\)](#) e.g. K

- **K = Organisation Identifier**

Note: [Government Office Region \(GOR\)](#) is identified by a one character code; no other one character code exists.

F Frame:

Example

Pharmacy Headquarters e.g. P001

- **P = Organisation Type Identifier**
- **001 = Organisation Identifier**

Also:

[Care Home](#) Headquarters

e.g.CA0A

[Optical Headquarters](#)

e.g.T1A1

G Frame:

Example

GP Practices in England and Wales e.g. Y00001

- **Y = Organisation Type Identifier**
- **00001 = Practice Identifier**

Also:

[Dental Practice](#)

e.g.V20052

H Frame:

Example

Cancer Network e.g. N01

- **N0 (where the 2nd character is numeric and not alpha) = Organisation Type Identifier**
- **1 = Organisation Identifier**

Also:

Booking Management System (BMS) Call Centre Establishment

e.g. YF1

Government Department

e.g. XDA

[Independent Sector Healthcare Provider \(ISHP\)](#) (where the 2nd character is alpha)

e.g. NV7

National Application Service Provider

e.g. YEA

[Other Statutory Authority \(OSA\)](#)

e.g. X16

I Frame:

Example

Special Health Authority (SpHA) e.g. T1150

- **T1 = Organisation Type Identifier**
 - **150 = Organisation Identifier**
-

K Frame:

Example

NHS Wales Informatics Service e.g. W00

- **W00 = Organisation Identifier**
-

L Frame:

Example

Northern Ireland Local Commissioning Group e.g. ZC010

- Characters 1-3 (ZC0) AND character 5 (0) = Organisation Type Identifier
- Character 4 = Organisation Identifier

Note: this is a 5 character method of displaying [Northern Ireland Local Commissioning Group](#) identifiers. Characters 3 and 5 are 'fillers'. If a 3 character code is required (as used by the [Office for National Statistics](#) in the [NHS Postcode Directory](#)) zeros can be omitted, e.g. ZC1.

The 3 character method of displaying the [Northern Ireland Local Commissioning Group](#) identifiers fit under the H Frame.

Guidance on the use of Northern Ireland codes can be found in [Data Set Change Notice 19/2009](#).

M Frame:

Example

[Clinical Commissioning Group \(CCG\)](#) e.g. 12A

- 12A = Organisation and Organisation Type Identifier

Also:

[Local Authority](#)

e.g.000

N Frame:

Example

[GP Abeyance and Dispersal GP Practice](#) e.g. G7817414

- G78 = Organisation Type Identifier
- 17414 = Organisation Identifier

The structure and format of [ORGANISATION CODES](#) maintained by the [Organisation Data Service](#), [NHS Prescription Services](#), [NHS Dental Services](#) and other agencies are detailed in the tables below.

ORGANISATION CODES TABLES

Table 1: CODING FORMATS FOR ORGANISATIONS IN ENGLAND AND WALES

Organisation Type	Frame Type	Character Position								Code allocated by:	Notes/Comments
		1	2	3	4	5	6	7	8		
	See Coding Frames Table										
Application Service Provider	B	Y	G	M	A-9	A-9				ODS	E.g. YGM01
Booking Management System (BMS) Call Centre Establishment	H	Y	F	A-9						ODS	E.g. YF1

Cancer Network	H	N	0-9	A-9						ODS	E.g. N01
Cancer Registry	A	Y	0-9	0-9	0-9	0-9				ODS	E.g. Y0401 All Cancer Registries in England are now part of the National Cancer Registration and Analysis Service
Care Home Headquarters	F	A, C or D	A-9	A-9	A-9					ODS	E.g. CA0A
Care Trust (CT)	D	T	A-Y	A-Y						ODS	E.g. TAK
Clinical Commissioning Group (CCG)	M	0-9	0-9	A-Y						ODS	E.g. 12A
Clinical Network	B	Y	D	G	A-9	A-9				ODS	E.g. YDG01
Commissioning Support Unit (CSU) / Data Services for Commissioners Regional Office (DSCRO)	D	0	A-Y	A-Y						ODS	E.g. 0AA
Dental Practice - England and Wales	G	V	0-9	0-9	0-9	0-9	0-9			NHS Dental Services	E.g. V20052
Education Establishment	B	Y	D	F	A-9	A-9				ODS	E.g. YDF01
Executive Agency	N/A See Note 1	X	0-9	0-9						ODS	E.g. X09
Executive Agency Programme	N/A See Note 1	X	0-9	0-9	0-9	0-9	0-9			ODS	First three characters denote Executive Agency

												E.g. X09001
Government Department	H	X	A-Y	A-Y							ODS	E.g. XDA
Government Office Region (GOR)	E	A-Y									ONS	E.g. K Government Office Regions (GORs) closed 31 March 2011 - from 1 April 2011 referred to as Regions
GP Abeyance and Dispersal GP Practice	N	G	7	8	0-9	0-9	0-9	0-9	0-9		ODS	E.g. G7817414
GP Practices in England and Wales	G	A-H, J-N, P, W & Y	0-9	0-9	0-9	0-9	0-9				NHS Prescription Services	Char 1 = W for Welsh GP Practice . All other values represent GP Practices in England. Note: from 2003, ALL newly allocated Practice Codes in England begin with a Y E.g. Y00001
Justice Organisation	D	V or W	A-Y	A-9							ODS	E.g. VAA
High Level Health Geography, e.g. NHS England (Region Local Office)	D	Q	A-9	A-9							ODS	E.g. Q72
Independent Sector Healthcare Provider (ISHP)	H	A, B, D, G, I, K,	A-Y	A-Y, 0-9							ODS	E.g. NV7

		L, M, N, O, S, U, V, W									
Local Authority (LA)	M	0-9	0-9	0-9						ODS	E.g. 000
Local Health Board (Wales)	B	7	A-9	A-9						ODS	E.g. 7A1
Local Service Provider (LSP)	B	L	S	P	0-9	0-9				ODS	E.g. LSP01
Military Hospital	B	X	M	D	A-9	A-9				ODS	E.g. XMDA1
National Application Service Provider	H	Y	E	A-9						ODS	E.g. YEA
National Groupings (England)	H	Y	5	0-9						ODS	E.g. Y51
NHS Support Agency	B	Y	D	D	A-9	A-9				ODS	E.g. YDD01
NHS Trust	D	R	A-9	A-9						ODS	E.g. RH8
NHS Wales Informatics Service (NWIS)	K	W	0	0						ODS	Only one organisation of this type exists for Wales E.g. W00
Non NHS Organisation (Independent Provider)	A	8	A-Y	A-9	0-9	0-9				ODS	E.g. 8HA03
Northern Ireland Health & Social Care Board	N/A	Z	B	0	0	1				ODS	E.g. ZB001

Northern Ireland Health & Social Care Trust	I	Z	T	0-9	0-9	0-9				ODS	E.g. ZT001
Northern Ireland Local Commissioning Group	L	Z	C	0	0-9	0				Department for Health, Social Services and Public Safety (DHSSPS), Northern Ireland	E.g. ZC010 Note that characters 3 and 5 are 'fillers' to create a 5 character code. If a 3 character code is required (as used by the Office for National Statistics in the NHS Postcode Directory), zeros can be omitted and fits under the H frame: E.g. ZC1. <i>Guidance on the use of Northern Ireland codes can be found in Data Set Change Notice 19/2009.</i>
Optical Headquarters	F	T	0-9	A-9	A-9					ODS	E.g. T1A1
Other Statutory Authority (OSA)	H	X	0-9	0-9						ODS	E.g. X16
Pharmacy	A	F	A-Y	A-9	A-9	A-9				ODS	E.g. FA002
Pharmacy Headquarters	F	P	A-9	A-9	A-9					ODS	E.g. P001
Primary Care Trust (PCT)	D	5	A-9	A-9						ODS	E.g. 5CT All Primary Care Trusts closed 31 March 2013
Prison Health Service	B	Y	D	E	A-9	A-9				ODS	E.g. YDE01

School	C	E	E	A-9	A-9	A-9	A-9	A-9	A-9	Department for Education and ODS	E.g. EE134290
Special Health Authority (SpHA)	I	T	1	0-9	0-9	0				ODS	E.g. T1150
Strategic Health Authority (SHA)	D	Q	A-9	A-9						ODS	E.g. Q30 All Strategic Health Authorities in England closed 31 March 2013
Welsh Assembly	D	W	0-9	0-9						ODS	E.g. W01
Welsh Health Commission	A	W	0-9	0-9	A-Y	A-Y				ODS	E.g. W01HC

Notes:

- **Codes for Executive Agency, Executive Agency Programme, Executive Agency Site and Executive Agency Programme Department do not easily fit into the coding frames as shown above and are therefore not included. This is due to their unusual structure in that there are more hierarchical 'tiers' than with other organisations.**

Executive Agency and Executive Agency Programme are both considered Organisation level entities, although each Programme does have a relationship to an Executive Agency. Executive Agency codes are three characters long. Executive Agency Programme codes are six, and their first three characters are the same as the Executive Agency they are associated to.

Department codes of eight characters long can then be allocated underneath a Programme code (sharing the first six characters). Executive Agency Site codes of five characters long can be allocated under an Executive Agency code (and share the first three characters).

- *A-9 indicates that characters A-Z and 0-9 are valid: except B, I, O, S, U and Z (to avoid ambiguity). This applies to all [ORGANISATION CODES](#) in the Coding Format Table above except [Independent Sector Healthcare Providers \(ISHP\)](#).*

Table 2: CODING FORMATS FOR ORGANISATIONS IN SCOTLAND

Scottish [ORGANISATION CODES](#) are supplied by the Information Standards Directorate (ISD) from NHS Scotland and published by the [Organisation Data Service](#).

Organisation Type	Character Position	Code allocated by:	Notes/Comments

	1	2	3	4	5	6		
GP Practice - Scotland	S	0-9	0-9	0-9	0-9	0-9	NHS	
Scottish GP Fundholder	S	A-Z	B	0-9	0-9		ISD, Scotland	2nd character identifies the Health Board the GPFH reports to. 3rd character (always B) shows GPFH status.
Scottish Health Agency	S	D	0-9	0-9	0-9		ISD, Scotland	2nd character (D) identifies Scottish Office agencies
Scottish Health Board	S	A-Z	9	9	9		ISD, Scotland	
Scottish Provider	S	A-Z	A,C,D	0-9	0-9		ISD, Scotland	2nd character identifies the Health Board the organisation reports to. 3rd character identifies the organisation type: A= Health Unit C = Hospital Trust D = Nursing Home

Table 3: CODING FORMATS for ORGANISATIONS in OTHER HOME COUNTRIES

Organisation Type	Character Position						Code allocated by:	Notes/Comments
	1	2	3	4	5	6		
GP Practice - Alderney	A	L	D	0-9	0-9	0-9	NHS Prescription Services	
GP Practice - Guernsey	G	U	E	0-9	0-9	0-9	NHS Prescription Services	
GP Practice - Isle of Man (IOM)	Y	0-9	0-9	0-9	0-9	0-9	NHS Prescription Services	

GP Practice - Jersey	J	E	R	0-9	0-9	0-9	NHS Prescription Services	
Primary Healthcare Directorate (Isle of Man)	Y	K	A-9				ODS	E.g. YK1

Note: A-9 indicates that characters A-Z and 0-9 are valid: except B, I, O, S, U and Z (to avoid ambiguity).

ORGANISATION IDENTIFIER

Change to Attribute: Changed Dataset

A unique identifier for an **ORGANISATION**.

Note:

- **ORGANISATION IDENTIFIERS** are governed by the fundamental standard for "Health and Social Care Organisation Reference Data" (HSC Org Ref Data).
- The standard only relates to **ORGANISATION IDENTIFIERS** which are maintained and published by the **Organisation Data Service (ODS)**. See **Health and Social Care Organisation Reference Data**.

The Format/Length of a published code for an:

- **Organisation** is min an3 max an8
- **Organisation Site** is min an5 max an9.

ORGANISATION CODE will be replaced with **ORGANISATION IDENTIFIER**, which is the most recent approved national information standard to describe the required definition.

OTHER UNIT OF MEASUREMENT DESCRIPTION FOR SYSTEMIC ANTI-CANCER THERAPY

Change to Attribute: New Attribute

A free text string to specify the **UNIT OF MEASUREMENT** used in a **Systemic Anti-Cancer Therapy Drug Administration** in a **Systemic Anti-Cancer Therapy Drug Cycle**, where the **UNIT OF MEASUREMENT FOR SYSTEMIC ANTI-CANCER THERAPY** is National Code 'Other (not listed)'.

This attribute is also known by these names:

Context	Alias
plural	OTHER UNIT OF MEASUREMENT DESCRIPTIONS FOR SYSTEMIC ANTI-CANCER THERAPY

OTHER UNIT OF MEASUREMENT DESCRIPTION FOR SYSTEMIC ANTI-CANCER THERAPY

Change to Attribute: New Attribute

OTHER UNIT OF MEASUREMENT DESCRIPTION FOR SYSTEMIC ANTI-CANCER THERAPY

Data Elements:

OTHER UNIT OF MEASUREMENT DESCRIPTION (SYSTEMIC ANTI-CANCER THERAPY)

PERFORMANCE STATUS CODE FOR YOUNG PERSON (RETIRED)_ renamed from **PERFORMANCE STATUS FOR YOUNG PERSON**

Change to Attribute: Changed Name, Dataset, Description, status to Retired

The "~~Lansky Play – Performance Scale~~" indicating a young **PERSON's** status relating to activity/~~disability~~. This item has been retired from the NHS Data Model and Dictionary.

This scale is used for young **PERSONS** aged 16 years and under. The last live version of this item is available in the ?????? release of the NHS Data Model and Dictionary.

Note: see [PERFORMANCE STATUS FOR ADULTS](#) for codes for an adult, i.e. over 16 years of age. Access to this version can be obtained by emailing information.standards@nhs.net with "NHS Data Model and Dictionary - Archive Request" in the email subject line.

National Codes:

- 00 100% = Fully active, normal
- 01 90% = Minor restrictions in physically strenuous activity
- 02 80% = Active, but tires more quickly
- 03 70% = Both greater restriction of, and less time spent in, play activities
- 04 60% = Up and around, but minimal active play; keeps busy with quieter activities
- 05 50% = Gets dressed but lies around much of the day; no active play; able to participate in all quiet play and activities
- 06 40% = Mostly in bed; participates in quiet activities
- 07 30% = In bed; needs assistance even for quiet play
- 08 20% = Often sleeping; play entirely limited to very passive activities
- 09 10% = No play; does not get out of bed
- 10 5% = Unresponsive
- 11 0% = Dead

PERFORMANCE STATUS CODE FOR YOUNG PERSON (RETIRED)_ renamed from **PERFORMANCE STATUS FOR YOUNG PERSON**

Change to Attribute: Changed Name, Dataset, Description, status to Retired

- **Changed Name** from **Data_Dictionary.Attributes.P.Paya.PERFORMANCE_STATUS_FOR_YOUNG_PERSON** to **Retired.Data_Dictionary.Attributes.P.PERFORMANCE_STATUS_CODE_FOR_YOUNG_PERSON**
- **null**
- **Changed Description**
- **Retired PERFORMANCE STATUS FOR YOUNG PERSON**

PERFORMANCE STATUS FOR ADULTS

Change to Attribute: Changed Dataset, Description

A [World Health Organisation](#) classification indicating a **PERSON's** status relating to activity/[DISABILITY](#).

This scale is used for adult **PERSONS** over 16 years of age.

Note: see [PERFORMANCE STATUS FOR YOUNG PERSON](#) for codes for a young person of 16 years and under. For further information, see the [National Institute for Health and Care Excellence](#) website at: [Appendix C. WHO performance status classification](#).

National Codes:

- 0 Able to carry out all normal activity without restriction
- 1 Restricted in physically strenuous activity, but able to walk and do light work
- 2 Able to walk and capable of all self-care, but unable to carry out any work. Up and about more than 50% of waking hours
- 3 Capable of only limited self-care, confined to bed or chair more than 50% of waking hours
- 4 Completely disabled. Cannot carry on any self-care. Totally confined to bed or chair
- 1 Restricted in strenuous activity but ambulatory and able to carry out light work
- 2 Ambulatory and capable of all self-care but unable to carry out any work activities; up and about more than 50% of waking hours
- 3 Symptomatic and in a chair or in bed for greater than 50% of the day but not bedridden
- 4 Completely disabled; cannot carry out any self-care; totally confined to bed or chair

Note: The National Codes descriptions of this Attribute have been updated as a result of changes to the World Health Organisation definitions. The Cancer Outcomes and Services Data Set specification will be updated in the next version of the Information Standard where it is not already correct.

PERSON BIRTH DATE

Change to Attribute: Changed Dataset

The date on which a **PERSON** was born or is officially deemed to have been born.

Note:

This was **e-GIF** approved for use in NHS England.

e-GIF and the **Government Data Standards Catalogue** have been archived and are available for reference only.

PERSON DEATH DATE

Change to Attribute: Changed Dataset

The date on which a **PERSON** died or is officially deemed to have died.

This is as recorded on the Death Certificate.

Note:

This was **e-GIF** approved for use in NHS England.

e-GIF and the **Government Data Standards Catalogue** have been archived and are available for reference only.

PERSON GENDER CODE

Change to Attribute: Changed Dataset

The classification is phenotypical rather than genotypical, i.e. it does not provide codes for medical or scientific purposes.

Notes:

- National Code 'Not Known' means that the sex of a **PERSON** has not been recorded
- National Code 'Not Specified' means indeterminate, i.e. unable to be classified as either male or female.

National Codes:

- 0 Not Known
- 1 Male
- 2 Female
- 9 Not Specified

Note:

This was [e-GIF](#) approved for use in NHS England.

[e-GIF](#) and the [Government Data Standards Catalogue](#) have been archived and are available for reference only.

[PERSON GENDER CODE](#) will be replaced with [PERSON STATED GENDER CODE](#) or [PERSON PHENOTYPIC SEX CLASSIFICATION](#), which is the most recent approved national information standard to describe the required definition.

PERSON NAME WORD TEXT

Change to Attribute: Changed Dataset

The character or string of characters comprising an element of a [PERSON](#)'s name which has been recorded for at least one [PERSON](#) (eg. 'Dr', 'John', 'Smith').

PERSON STATED GENDER CODE

Change to Attribute: Changed Dataset

The gender of a [PERSON](#).

[PERSON STATED GENDER CODE](#) is self declared or inferred by observation for those unable to declare their [PERSON STATED GENDER](#).

National Codes:

- 1 Male
- 2 Female
- 9 Indeterminate (unable to be classified as either male or female)

[PERSON GENDER CODE](#) will be replaced with [PERSON STATED GENDER CODE](#) or [PERSON PHENOTYPIC SEX CLASSIFICATION](#), which is the most recent approved national information standard to describe the required definition.

PLANNED TREATMENT CHANGE REASON (RETIRED) renamed from PLANNED TREATMENT CHANGE REASON

Change to Attribute: Changed Name, Dataset, Description, status to Retired

~~An indicator of whether the treatment within an [Anti-Cancer Drug Programme](#) was completed as planned, and if not, the reason why.~~ This item has been retired from the NHS Data Model and Dictionary.

~~*National Codes:* The last live version of this item is available in the ?????? release of the NHS Data Model and Dictionary.~~

Treatment completed

- 0 Treatment completed as prescribed

Treatment not completed

- 1 [PATIENT](#) died
- 2 Progressive disease during [Chemotherapy](#)
- 3 Acute [Chemotherapy](#) toxicity

- 4 Technical or organisational problems
- 5 [PATIENT](#) choice (stopped or interrupted treatment)

Access to this version can be obtained by emailing information.standards@nhs.net with "NHS Data Model and Dictionary - Archive Request" in the email subject line.

PLANNED TREATMENT CHANGE REASON (RETIRED) renamed from **PLANNED TREATMENT CHANGE REASON**

Change to Attribute: Changed Name, Dataset, Description, status to Retired

- **Changed Name** from **Data_Dictionary.Attributes.P.Pha.PLANNED_TREATMENT_CHANGE_REASON** to **Retired.Data_Dictionary.Attributes.P.PLANNED_TREATMENT_CHANGE_REASON**
- null
- **Changed Description**
- **Retired PLANNED TREATMENT CHANGE REASON**

POSTCODE

Change to Attribute: Changed Dataset

The code assigned by Royal Mail to identify postal delivery areas across the United Kingdom.

[POSTCODES](#) may also be used to identify a [GEOGRAPHIC AREA](#).

Note:

This was [e-GIF](#) approved for use in NHS England.

[e-GIF](#) and the [Government Data Standards Catalogue](#) have been archived and are available for reference only.

SYSTEMIC ANTI-CANCER THERAPY ACTUAL DOSE renamed from **CHEMOTHERAPY ACTUAL DOSE**

Change to Attribute: Changed Name, Dataset, Description

~~The actual [Chemotherapy](#) dose given.~~ The actual [Systemic Anti-Cancer Therapy](#) dose given in each [Systemic Anti-Cancer Therapy Drug Administration](#) in a [Systemic Anti-Cancer Therapy Drug Cycle](#).

~~For the [Systemic Anti-Cancer Therapy Data Set](#), this is for each administration in a [Systemic Anti-Cancer Drug Cycle](#).~~

SYSTEMIC ANTI-CANCER THERAPY ACTUAL DOSE renamed from **CHEMOTHERAPY ACTUAL DOSE**

Change to Attribute: Changed Name, Dataset, Description

- **Changed Name** from **Data_Dictionary.Attributes.C.Ce.CHEMOTHERAPY_ACTUAL_DOSE** to **Data_Dictionary.Attributes.S.Sup.SYSTEMIC_ANTI-CANCER_THERAPY_ACTUAL_DOSE**
- null
- **Changed Description**

SYSTEMIC ANTI-CANCER THERAPY CURATIVE TREATMENT COMPLETED AS PLANNED INDICATOR

Change to Attribute: New Attribute

An indication of whether the [Systemic Anti-Cancer Therapy](#) curative treatment was completed as planned.

[National Codes:](#)

- Y Yes - the Systemic Anti-Cancer Therapy curative treatment was completed as planned
- N No - the Systemic Anti-Cancer Therapy curative treatment was not completed as planned

This attribute is also known by these names:

Context	Alias
plural	SYSTEMIC ANTI-CANCER THERAPY CURATIVE TREATMENT COMPLETED AS PLANNED INDICATORS

SYSTEMIC ANTI-CANCER THERAPY CURATIVE TREATMENT COMPLETED AS PLANNED INDICATOR

Change to Attribute: New Attribute

SYSTEMIC ANTI-CANCER THERAPY CURATIVE TREATMENT COMPLETED AS PLANNED INDICATOR

Data Elements:

SYSTEMIC ANTI-CANCER THERAPY CURATIVE TREATMENT COMPLETED AS PLANNED INDICATOR
--

SYSTEMIC ANTI-CANCER THERAPY CURATIVE TREATMENT NOT COMPLETED OUTCOME REASON

Change to Attribute: New Attribute

The reason why the Systemic Anti-Cancer Therapy curative treatment was not completed.

SYSTEMIC ANTI-CANCER THERAPY CURATIVE TREATMENT NOT COMPLETED OUTCOME REASON is recorded where the **SYSTEMIC ANTI-CANCER THERAPY CURATIVE TREATMENT COMPLETED AS PLANNED INDICATOR** is National Code 'No - the Systemic Anti-Cancer Therapy curative treatment was not completed as planned'.

National Codes:

- 1 Progressive/Recurrent Cancer
- 2 Toxicity
- 3 Death of PATIENT
- 4 PATIENT choice
- 5 Other (not listed)

This attribute is also known by these names:

Context	Alias
plural	SYSTEMIC ANTI-CANCER THERAPY CURATIVE TREATMENT NOT COMPLETED OUTCOME REASONS

SYSTEMIC ANTI-CANCER THERAPY CURATIVE TREATMENT NOT COMPLETED OUTCOME REASON

Change to Attribute: New Attribute

SYSTEMIC ANTI-CANCER THERAPY CURATIVE TREATMENT NOT COMPLETED OUTCOME REASON

Data Elements:

SYSTEMIC ANTI-CANCER THERAPY CURATIVE TREATMENT NOT COMPLETED OUTCOME REASON
--

SYSTEMIC ANTI-CANCER THERAPY DRUG NAME_ renamed from SYSTEMIC ANTI-CANCER DRUG NAME

Change to Attribute: Changed Name, Dataset, Description

~~The name of the [Chemotherapy \(Systemic Anti-Cancer Therapy\)](#) drug given to a [PATIENT](#) during an [Anti-Cancer Drug Regimen](#).~~ The name of the [Systemic Anti-Cancer Therapy](#) drug given to a [PATIENT](#) during an [Systemic Anti-Cancer Therapy Drug Regimen](#).

~~The name is taken from the [British National Formulary](#) chapter 8.~~ The name is taken from the [British National Formulary](#).

SYSTEMIC ANTI-CANCER THERAPY DRUG NAME_ renamed from SYSTEMIC ANTI-CANCER DRUG NAME

Change to Attribute: Changed Name, Dataset, Description

- **Changed Name from Data_Dictionary.Attributes.S.Sup.SYSTEMIC_ANTI-CANCER_DRUG_NAME to Data_Dictionary.Attributes.S.Sup.SYSTEMIC_ANTI-CANCER_THERAPY_DRUG_NAME**
- null
- **Changed Description**

SYSTEMIC ANTI-CANCER THERAPY DRUG REGIMEN ACRONYM_ renamed from DRUG REGIMEN ACRONYM

Change to Attribute: Changed Name, Dataset, Description

~~The acronym derived from the drugs used in the [Anti-Cancer Drug Regimen](#) used to identify the drugs used in the regimen.~~ The acronym derived from the drugs used in the [Systemic Anti-Cancer Therapy Drug Regimen](#).

Examples include:

- ~~'CMF' for a regimen comprising Cyclophosphamide, Methotrexate and 5-Fluorouracil~~
- ~~'AC' for a regimen comprising Doxorubicin and Cyclophosphamide, etc.~~

SYSTEMIC ANTI-CANCER THERAPY DRUG REGIMEN ACRONYM_ renamed from DRUG REGIMEN ACRONYM

Change to Attribute: Changed Name, Dataset, Description

- **Changed Name from Data_Dictionary.Attributes.D.Drug.DRUG_REGIMEN_ACRONYM to Data_Dictionary.Attributes.S.Sup.SYSTEMIC_ANTI-CANCER_THERAPY_DRUG_REGIMEN_ACRONYM**
- null
- **Changed Description**

SYSTEMIC ANTI-CANCER THERAPY DRUG REGIMEN MODIFICATION INDICATOR FOR DOSE REDUCTION_ renamed from SYSTEMIC ANTI-CANCER THERAPY REGIMEN MODIFICATION INDICATOR

Change to Attribute: Changed Name, Dataset, Description

~~An indication of whether a [Systemic Anti-Cancer Drug Regimen](#) was modified.~~ An indication of whether the [Systemic Anti-Cancer Therapy Drug Regimen](#) was modified by reducing the dose of the [Systemic Anti-Cancer Therapy](#) drug administered, at any point after commencement of the [Systemic Anti-Cancer Therapy Drug Regimen](#).

This could be by:

- ~~reducing the administration days below the number planned~~
- ~~reducing the dose administered or~~
- ~~extending the time between [SYSTEMIC ANTI-CANCER THERAPY ADMINISTRATION DATES](#).~~

National Codes:

- Y Yes - a [Systemic Anti-Cancer Drug Regimen](#) was modified
- N No - a [Systemic Anti-Cancer Drug Regimen](#) was not modified
- Y Yes - the [Systemic Anti-Cancer Therapy Drug Regimen](#) was modified by reducing the dose of the [Systemic Anti-Cancer Therapy](#) drug administered

N No - the Systemic Anti-Cancer Therapy Drug Regimen was not modified by reducing the dose of the Systemic Anti-Cancer Therapy drug administered

SYSTEMIC ANTI-CANCER THERAPY DRUG REGIMEN MODIFICATION INDICATOR FOR DOSE REDUCTION_ renamed from SYSTEMIC ANTI-CANCER THERAPY REGIMEN MODIFICATION INDICATOR

Change to Attribute: Changed Name, Dataset, Description

- **Changed Name from Data_Dictionary.Attributes.S.Sup.SYSTEMIC_ANTI-CANCER_THERAPY_REGIMEN_MODIFICATION_INDICATOR to Data_Dictionary.Attributes.S.Sup.SYSTEMIC_ANTI-CANCER_THERAPY_DRUG_REGIMEN_MODIFICATION_INDICATOR_FOR_DOSE_REDUCTION**
- null
- **Changed Description**

SYSTEMIC ANTI-CANCER THERAPY DRUG REGIMEN TREATMENT INTENT_ renamed from DRUG TREATMENT INTENT

Change to Attribute: Changed Name, Dataset, Description

~~The overall aim of the Anti-Cancer Drug Programme.~~

The intent of the Systemic Anti-Cancer Therapy Drug Regimen.

National Codes:

- A Adjuvant
- N Neoadjuvant
- C Curative
- P Palliative
- D Disease Modification
- A Adjuvant (Retired 1 September 2019)
- N Neoadjuvant (Retired 1 September 2019)
- C Curative (Retired 1 September 2019)
- P Palliative (Retired 1 September 2019)
- D Disease Modification (Retired 1 September 2019)
- 01 Curative - aiming to permanently eradicate disease
- 02 Palliative - aiming to extend life expectancy
- 03 Palliative - aiming to relieve and/or control malignancy related symptoms
- 04 Palliative - aiming to achieve remission
- 05 Palliative - aiming to delay tumour progression
- 98 Other (not listed)

SYSTEMIC ANTI-CANCER THERAPY DRUG REGIMEN TREATMENT INTENT_ renamed from DRUG TREATMENT INTENT

Change to Attribute: Changed Name, Dataset, Description

- **Changed Name from Data_Dictionary.Attributes.D.Drug.DRUG_TREATMENT_INTENT to Data_Dictionary.Attributes.S.Sup.SYSTEMIC_ANTI-CANCER_THERAPY_DRUG_REGIMEN_TREATMENT_INTENT**
- null
- **Changed Description**

SYSTEMIC ANTI-CANCER THERAPY DRUG ROUTE OF ADMINISTRATION

Change to Attribute: Changed Dataset, Description

~~The prescribed method of delivery for each administration in a Systemic Anti-Cancer Drug Cycle.~~ **The prescribed route of administration for each Systemic Anti-Cancer Therapy Drug Administration in a Systemic Anti-Cancer Therapy Drug Cycle.**

National codes:

- 01 Intravenous
- 02 Oral
- 03 Intrathecal
- 04 Intramuscular
- 05 Subcutaneous
- 06 Intraarterial
- 07 Intraperitoneal
- 08 Other intracavity Intracavernous
- 09 Intra-Vesicular Intravesical
- 10 Intratumour Intralesional
- 11 Topical Cutaneous
- 09 Intravesical (Intra-Vesicular)
- 10 Intratumour / Intralesional (Retired 1 September 2019)
- 11 Cutaneous (Topical)
- 12 Intradermal
- 99 Other
- 13 Intratumour
- 14 Intralesional
- 99 Other (Retired 1 September 2019)
- 98 Other (not listed)

SYSTEMIC ANTI-CANCER THERAPY NON CURATIVE TREATMENT PATIENT BENEFIT INDICATOR

Change to Attribute: New Attribute

An indication of whether the PATIENT benefited from the Systemic Anti-Cancer Therapy non-curative treatment.

Note: Systemic Anti-Cancer Therapy non-curative treatment is for prolonging life and reducing symptoms. It is often given to PATIENTS with advanced cancer to make PATIENTS more comfortable towards the end of life.

National Codes:

- Y Yes - the PATIENT benefited from the Systemic Anti-Cancer Therapy non-curative treatment
- N No - the PATIENT did not benefit from the Systemic Anti-Cancer Therapy non-curative treatment

This attribute is also known by these names:

Context	Alias
plural	SYSTEMIC ANTI-CANCER THERAPY NON CURATIVE TREATMENT PATIENT BENEFIT INDICATORS

SYSTEMIC ANTI-CANCER THERAPY NON CURATIVE TREATMENT PATIENT BENEFIT INDICATOR

Change to Attribute: New Attribute

SYSTEMIC ANTI-CANCER THERAPY NON CURATIVE TREATMENT PATIENT BENEFIT INDICATOR

Data Elements:

SYSTEMIC ANTI-CANCER THERAPY NON CURATIVE TREATMENT PATIENT BENEFIT INDICATOR

SYSTEMIC ANTI-CANCER THERAPY PROGRAMME NUMBER (RETIRED)_ renamed from SYSTEMIC ANTI-CANCER THERAPY PROGRAMME NUMBER

Change to Attribute: Changed Name, Dataset, Description, status to Retired

The number of the Systemic Anti-Cancer Drug Programme. This item has been retired from the NHS Data Model and Dictionary.

The SYSTEMIC ANTI-CANCER THERAPY PROGRAMME NUMBER is allocated locally. The last live version of this item is available in the ?????? release of the NHS Data Model and Dictionary.

Systemic Anti-Cancer Drug Programmes are numbered according to their chronological order of commencement in the PATIENT's disease management. Access to this version can be obtained by emailing information.standards@nhs.net with "NHS Data Model and Dictionary - Archive Request" in the email subject line.

This corresponds to the term "line of chemotherapy" expressed in many prescribing systems.

SYSTEMIC ANTI-CANCER THERAPY PROGRAMME NUMBER (RETIRED)_ renamed from SYSTEMIC ANTI-CANCER THERAPY PROGRAMME NUMBER

Change to Attribute: Changed Name, Dataset, Description, status to Retired

- Changed Name from Data Dictionary.Attributes.S.Sup.SYSTEMIC ANTI-CANCER_THERAPY_PROGRAMME_NUMBER to Retired.Data Dictionary.Attributes.S.SYSTEMIC ANTI-CANCER_THERAPY_PROGRAMME_NUMBER
 - null
 - Changed Description
 - Retired SYSTEMIC ANTI-CANCER THERAPY PROGRAMME NUMBER
-

SYSTEMIC ANTI-CANCER THERAPY TOXICITY MODIFICATION INDICATOR

Change to Attribute: New Attribute

An indication of whether toxicity was a deciding factor in modifying the Systemic Anti-Cancer Therapy Drug Regimen.

National Codes:

- Y Yes - toxicity was a deciding factor in modifying the Systemic Anti-Cancer Therapy Drug Regimen
 - N No - toxicity was not a deciding factor in modifying the Systemic Anti-Cancer Therapy Drug Regimen
-

This attribute is also known by these names:

Context	Alias
plural	SYSTEMIC ANTI-CANCER THERAPY TOXICITY MODIFICATION INDICATORS

SYSTEMIC ANTI-CANCER THERAPY TOXICITY MODIFICATION INDICATOR

Change to Attribute: New Attribute

SYSTEMIC ANTI-CANCER THERAPY TOXICITY MODIFICATION INDICATOR

Data Elements:

SYSTEMIC ANTI-CANCER THERAPY TOXICITY MODIFICATION INDICATOR
--

TNM CATEGORY

Change to Attribute: Changed Dataset

The [Tumour](#), Node and Metastasis category used during a [Cancer Care Spell](#).

This may be from the [Union for International Cancer Control \(UICC\)](#) or [American Joint Committee on Cancer \(AJCC\)](#).

Note:

- [Tumour \(T\)](#) describes the size of the [Tumour](#) and whether it has invaded nearby [TISSUE](#)
- [Node \(N\)](#) describes regional lymph nodes that are involved
- [Metastasis \(M\)](#) describes distant metastasis (spread of cancer from one body part to another).

UNIT OF MEASUREMENT FOR SYSTEMIC ANTI-CANCER THERAPY

Change to Attribute: New Attribute

The **UNIT OF MEASUREMENT** used for each [Systemic Anti-Cancer Therapy Drug Administration](#) in a [Systemic Anti-Cancer Therapy Drug Cycle](#).

National Codes:

01	Milligrams (mg)
02	Micrograms (Mcg)
03	Grams (g)
04	Units
05	Cells
06	Plaque Forming Units (PFU) (one million) (x10 ⁶)
07	Plaque Forming Units (PFU) (one hundred million) (x10 ⁸)
98	Other (not listed)

This attribute is also known by these names:

Context	Alias
plural	UNITS OF MEASUREMENT FOR SYSTEMIC ANTI-CANCER THERAPY

UNIT OF MEASUREMENT FOR SYSTEMIC ANTI-CANCER THERAPY

Change to Attribute: New Attribute

UNIT OF MEASUREMENT FOR SYSTEMIC ANTI-CANCER THERAPY

Data Elements:

[UNIT OF MEASUREMENT \(SYSTEMIC ANTI-CANCER THERAPY\)](#)

ADJUNCTIVE THERAPY TYPE

Change to Data Element: Changed Dataset

Format/Length:	an1
National Codes:	See ADJUNCTIVE THERAPY TYPE
Default Codes:	3 - Not Applicable (Primary Treatment) 9 - Not Known (Not Recorded)

Notes:

[ADJUNCTIVE THERAPY TYPE](#) is the same as attribute [ADJUNCTIVE THERAPY TYPE](#).

ANTI-CANCER REGIMEN NUMBER (RETIRED)_ renamed from ANTI-CANCER REGIMEN NUMBER

Change to Data Element: Changed Name, Dataset, Description, status to Retired, linked Attribute

Format/Length:	max-n2
National Codes:	
Default Codes:	

Notes:

~~ANTI-CANCER REGIMEN NUMBER is the same as attribute ANTI-CANCER REGIMEN NUMBER. This item has been retired from the NHS Data Model and Dictionary.~~

The last live version of this item is available in the ?????? release of the NHS Data Model and Dictionary.

Access to this version can be obtained by emailing information.standards@nhs.net with "NHS Data Model and Dictionary - Archive Request" in the email subject line.

ANTI-CANCER REGIMEN NUMBER (RETIRED)_ renamed from ANTI-CANCER REGIMEN NUMBER

Change to Data Element: Changed Name, Dataset, Description, status to Retired, linked Attribute

ANTI-CANCER REGIMEN NUMBER

Attribute:

ANTI-CANCER REGIMEN NUMBER
--

ANTI-CANCER REGIMEN NUMBER (RETIRED)_ renamed from ANTI-CANCER REGIMEN NUMBER

Change to Data Element: Changed Name, Dataset, Description, status to Retired, linked Attribute

- Changed Name from Data_Dictionary.Data_Field_Notes.A.An.ANTI-CANCER_REGIMEN_NUMBER to Retired.Data_Dictionary.Data_Field_Notes.A.ANTI-CANCER_REGIMEN_NUMBER
- null
- Changed Description
- Retired ANTI-CANCER REGIMEN NUMBER
- null

CARE PROFESSIONAL MAIN SPECIALTY CODE (START SYSTEMIC ANTI-CANCER THERAPY)

Change to Data Element: Changed Dataset, Description

Format/Length:	an3
National Codes:	See MAIN SPECIALTY CODE
Default Codes:	

Notes:

CARE PROFESSIONAL MAIN SPECIALTY CODE (START SYSTEMIC ANTI-CANCER THERAPY) is the same as data element [CARE PROFESSIONAL MAIN SPECIALTY CODE](#).

~~For the [Systemic Anti-Cancer Therapy Data Set](#), [CARE PROFESSIONAL MAIN SPECIALTY CODE \(START SYSTEMIC ANTI-CANCER THERAPY\)](#) is the [MAIN SPECIALTY CODE](#) of the [CONSULTANT](#) who initiated the [Chemotherapy](#). [CARE PROFESSIONAL MAIN SPECIALTY CODE \(START SYSTEMIC ANTI-CANCER THERAPY\)](#) is the [MAIN SPECIALTY CODE](#) of the [CONSULTANT](#) who initiated the [Systemic Anti-Cancer Therapy](#).~~

CHEMO-RADIATION INDICATOR (RETIRED) renamed from CHEMO-RADIATION INDICATOR

Change to Data Element: Changed Name, Dataset, Description, status to Retired, linked Attribute

Format/Length:	an4
National Codes:	See CHEMO-RADIATION INDICATOR
Default Codes:	

Notes:

~~CHEMO-RADIATION INDICATOR is the same as attribute CHEMO-RADIATION INDICATOR. This item has been retired from the NHS Data Model and Dictionary.~~

The last live version of this item is available in the ?????? release of the NHS Data Model and Dictionary.

Access to this version can be obtained by emailing information.standards@nhs.net with "NHS Data Model and Dictionary - Archive Request" in the email subject line.

CHEMO-RADIATION INDICATOR (RETIRED) renamed from CHEMO-RADIATION INDICATOR

Change to Data Element: Changed Name, Dataset, Description, status to Retired, linked Attribute

CHEMO-RADIATION INDICATOR

Attribute:

[CHEMO-RADIATION INDICATOR](#)

CHEMO-RADIATION INDICATOR (RETIRED) renamed from CHEMO-RADIATION INDICATOR

Change to Data Element: Changed Name, Dataset, Description, status to Retired, linked Attribute

- **Changed Name from Data Dictionary.Data_Field_Notes.C.Ce.CHEMO-RADIATION_INDICATOR to Retired.Data Dictionary.Data_Field_Notes.C.CHEMO-RADIATION_INDICATOR**
- **null**
- **Changed Description**
- **Retired CHEMO-RADIATION INDICATOR**
- **null**

CLINICAL TRIAL INDICATOR

Change to Data Element: Changed Dataset, Description

Format/Length:	an2
National Codes:	See CLINICAL TRIAL INDICATOR
Default Codes:	99 - Unknown *
Default Codes:	99 - Unknown (Not Recorded)

Notes:

~~CLINICAL TRIAL INDICATOR is the same as attribute CLINICAL TRIAL INDICATOR.~~

~~For the [Systemic Anti-Cancer Therapy Data Set](#), this identifies if a [PATIENT's Chemotherapy treatment is within a CLINICAL TRIAL](#). For the [Systemic Anti-Cancer Therapy Data Set](#), [CLINICAL TRIAL INDICATOR](#) identifies if a [PATIENT](#) is currently in an active [Systemic Anti-Cancer Therapy CLINICAL TRIAL](#).~~

~~Note: * For the [National Cancer Waiting Times Monitoring Data Set](#), default code '99 - Unknown' indicates "Not Recorded".~~

CO-MORBIDITY ADJUSTMENT INDICATOR

Change to Data Element: Changed Dataset

Format/Length:	an1
National Codes:	See CO-MORBIDITY ADJUSTMENT INDICATOR
Default Codes:	

Notes:

[CO-MORBIDITY ADJUSTMENT INDICATOR](#) is the same as attribute [CO-MORBIDITY ADJUSTMENT INDICATOR](#).

CONSULTANT CODE (INITIATED SYSTEMIC ANTI-CANCER THERAPY)

Change to Data Element: Changed Dataset, Description

Format/Length:	See CONSULTANT CODE
National Codes:	
Default Codes:	

Notes:

[CONSULTANT CODE \(INITIATED SYSTEMIC ANTI-CANCER THERAPY\)](#) is the same as data element [CONSULTANT CODE](#).

~~For the [Systemic Anti-Cancer Therapy Data Set](#), [CONSULTANT CODE \(INITIATED SYSTEMIC ANTI-CANCER THERAPY\)](#) is the [CONSULTANT CODE](#) of the [CONSULTANT](#) who initiated the [Chemotherapy](#).~~ **[CONSULTANT CODE \(INITIATED SYSTEMIC ANTI-CANCER THERAPY\)](#) is the [CONSULTANT CODE](#) of the [CONSULTANT](#) who initiated the [Systemic Anti-Cancer Therapy](#).**

[CONSULTANT CODE \(INITIATED SYSTEMIC ANTI-CANCER THERAPY\)](#) will be replaced with both [PROFESSIONAL REGISTRATION ISSUER CODE](#) and [PROFESSIONAL REGISTRATION ENTRY IDENTIFIER](#), which are the most recently approved national information standards to describe the required definition.

DECISION TO TREAT DATE (SYSTEMIC ANTI-CANCER THERAPY DRUG REGIMEN) renamed from **DECISION TO TREAT DATE (ANTI-CANCER DRUG REGIMEN)**

Change to Data Element: Changed Name, Dataset, Description

Format/Length:	See DATE
National Codes:	
Default Codes:	

Notes:

~~[DECISION TO TREAT DATE \(ANTI-CANCER DRUG REGIMEN\)](#) is the same as attribute [DECISION TO TREAT DATE](#).~~ **[DECISION TO TREAT DATE \(SYSTEMIC ANTI-CANCER THERAPY DRUG REGIMEN\)](#) is the same as attribute [DECISION TO TREAT DATE](#).**

~~[DECISION TO TREAT DATE \(ANTI-CANCER DRUG REGIMEN\)](#) is the [DECISION TO TREAT DATE](#) of the [Planned Cancer Treatment](#) with a [PLANNED CANCER TREATMENT TYPE](#) of National Code '[Chemotherapy](#)' or '[Hormone Therapy](#)' and where the [FIRST DEFINITIVE TREATMENT PLANNED](#) is classification '[First Definitive Treatment planned](#)'.~~ **[DECISION TO TREAT DATE \(SYSTEMIC ANTI-CANCER THERAPY DRUG REGIMEN\)](#) is the [DATE](#) that the consultation between the [PATIENT](#) and the [CARE PROFESSIONAL](#) took place where a decision was taken to treat a [PATIENT](#) with a [Systemic Anti-Cancer Therapy Drug Regimen](#).**

DECISION TO TREAT DATE (SYSTEMIC ANTI-CANCER THERAPY DRUG REGIMEN)_ renamed from **DECISION TO TREAT DATE (ANTI-CANCER DRUG REGIMEN)**

Change to Data Element: Changed Name, Dataset, Description

- **Changed Name from Data Dictionary.Data_Field_Notes.D.Dea.DECISION_TO_TREAT_DATE_(ANTI-CANCER_DRUG_REGIMEN) to Data Dictionary.Data_Field_Notes.D.Dea.DECISION_TO_TREAT_DATE_(SYSTEMIC ANTI-CANCER_THERAPY_DRUG_REGIMEN)**
- **null**
- **Changed Description**

DIAGNOSIS (SNOMED CT)

Change to Data Element: Changed Dataset

Format/Length:	See SNOMED CT CODE
National Codes:	
Default Codes:	

Notes:

[DIAGNOSIS \(SNOMED CT\)](#) is the same as attribute [CLINICAL TERMINOLOGY CODE](#).

[DIAGNOSIS \(SNOMED CT\)](#) is the [SNOMED CT](#)® concept ID which is used to identify the [PATIENT DIAGNOSIS](#).

ETHNIC CATEGORY

Change to Data Element: Changed Dataset

Format/Length:	an2
NWDS ID:	PETH
NWDS Field Name:	Ethnic Category
ESR Field Name:	Ethnic Origin
National Codes:	See ETHNIC CATEGORY CODE
Default Codes:	99 - Not known*

Notes:

[ETHNIC CATEGORY](#) is the same as attribute [ETHNIC CATEGORY CODE](#).

The 16+1 ethnic data categories defined in the 2001 census is the national mandatory standard for the collection and analysis of ethnicity.

The national code must be transmitted as the first character in the 2 character field. The second character is optional for use locally. It must, however, be able to be grouped consistently with the 16 main categories.

National code Z should be used where the [PERSON](#) has been given the opportunity to state their [ETHNIC CATEGORY](#) but chose not to. Default code 99 should be used where the [PERSON's](#) [ETHNIC CATEGORY](#) is not known.

***For the [Stop Smoking Services Quarterly Data Set](#) default code 99 'Not Known' is NOT valid.**

GENERAL MEDICAL PRACTICE CODE (PATIENT REGISTRATION)

Change to Data Element: Changed Dataset

Format/Length:	an6
National Codes:	
ODS Default Codes :	V81997 - No Registered GP Practice
	V81998 - GP Practice Code not applicable
	V81999 - GP Practice Code not known

Notes:

GENERAL MEDICAL PRACTICE CODE (PATIENT REGISTRATION) is the same as attribute **ORGANISATION CODE**.

The data for **GENERAL MEDICAL PRACTICE CODE (PATIENT REGISTRATION)** is supplied by the **NHS Prescription Services**.

GENERAL MEDICAL PRACTICE CODE (PATIENT REGISTRATION) is the **ORGANISATION CODE** of the **GP Practice** that the **PATIENT** is registered with.

Use of Organisation Data Service Default Codes

- **V81997** should be used when a **PATIENT** presents, who is not currently registered at a **GP Practice**, but is eligible to be registered should they wish to.
- **V81998** should be used where a **PATIENT** should not have a registered **GP Practice**, due for instance to them having only recently entered the country.
- **V81999** should be used where it is not possible to determine a **PATIENT's** registered **GP Practice** code, but it is known that they should have one, or where it is impossible to determine whether they should or shouldn't have a registered practice (for instance the **PATIENT** cannot communicate and is unidentified).

LOCAL PATIENT IDENTIFIER (EXTENDED)

Change to Data Element: Changed Dataset, Description

Format/Length:	max an20
National Codes:	
Default Codes:	

Notes:

LOCAL PATIENT IDENTIFIER (EXTENDED) is the same as attribute **LOCAL PATIENT IDENTIFIER**.

LOCAL PATIENT IDENTIFIER (EXTENDED) is used where IT systems have a **LOCAL PATIENT IDENTIFIER** which is longer than 10 characters and **LOCAL PATIENT IDENTIFIER** cannot be used for data submission.

~~For the **Cancer Outcomes and Services Data Set**, **LOCAL PATIENT IDENTIFIER (EXTENDED)** can be recorded as well as or instead of **NHS NUMBER** as part of a **Cancer Care Spell**.~~

MORPHOLOGY (ICD-O AT START SYSTEMIC ANTI-CANCER THERAPY)

Change to Data Element: Changed Dataset, Description

Format/Length:	See ICD-O CODE
National Codes:	
Default Codes:	

Notes:

~~**MORPHOLOGY (ICD-O AT START SYSTEMIC ANTI-CANCER THERAPY)** is the **PATIENT DIAGNOSIS** for the cell type at the start of a **Systemic Anti-Cancer Drug Programme**. **MORPHOLOGY (ICD-O AT START SYSTEMIC ANTI-CANCER THERAPY)** is the same as attribute **CLINICAL CLASSIFICATION CODE**.~~

~~**MORPHOLOGY (ICD-O AT START SYSTEMIC ANTI-CANCER THERAPY)** is the **PATIENT DIAGNOSIS** using the **International Classification of Diseases for Oncology (ICD-O)** code. **MORPHOLOGY (ICD-O AT START SYSTEMIC ANTI-CANCER THERAPY)** is the~~

Morphology International Classification of Diseases for Oncology (ICD-O) code at the start of the Systemic Anti-Cancer Therapy.

NHS NUMBER

Change to Data Element: Changed Dataset, Description

Format/Length:	n10
National Codes:	
Default Codes:	

Notes:

NHS NUMBER is the same as attribute NHS NUMBER.

For the AIDC for Patient Identification Data Set, NHS NUMBER must be displayed in accordance with the NHS Common User Interface Information Standard - NHS Number Input and Display (ISB 1504).

~~For the Cancer Outcomes and Services Data Set, NHS NUMBER can be recorded as well as or instead of LOCAL PATIENT IDENTIFIER (EXTENDED) as part of a Cancer Care Spell.~~

NHS NUMBER STATUS INDICATOR CODE

Change to Data Element: Changed Dataset

Format/Length:	an2
National Codes:	See NHS NUMBER STATUS INDICATOR CODE
Default Codes:	

Notes:

NHS NUMBER STATUS INDICATOR CODE is the same as attribute NHS NUMBER STATUS INDICATOR CODE.

NUMBER OF SYSTEMIC ANTI-CANCER THERAPY CYCLES PLANNED (RETIRED)_ renamed from NUMBER OF SYSTEMIC ANTI-CANCER THERAPY CYCLES PLANNED

Change to Data Element: Changed Name, Dataset, Description, status to Retired, linked Attribute

Format/Length:	max-n2
National Codes:	
Default Codes:	

Notes:

~~NUMBER OF SYSTEMIC ANTI-CANCER THERAPY CYCLES PLANNED is the same as attribute NUMBER OF SYSTEMIC ANTI-CANCER THERAPY CYCLES PLANNED. This item has been retired from the NHS Data Model and Dictionary.~~

The last live version of this item is available in the ?????? release of the NHS Data Model and Dictionary.

Access to this version can be obtained by emailing information.standards@nhs.net with "NHS Data Model and Dictionary - Archive Request" in the email subject line.

NUMBER OF SYSTEMIC ANTI-CANCER THERAPY CYCLES PLANNED (RETIRED)_ renamed from NUMBER OF SYSTEMIC ANTI-CANCER THERAPY CYCLES PLANNED

Change to Data Element: Changed Name, Dataset, Description, status to Retired, linked Attribute

NUMBER OF SYSTEMIC ANTI-CANCER THERAPY CYCLES PLANNED

Attribute:

[NUMBER OF SYSTEMIC ANTI-CANCER THERAPY CYCLES PLANNED](#)

NUMBER OF SYSTEMIC ANTI-CANCER THERAPY CYCLES PLANNED (RETIRED)_ renamed from NUMBER OF SYSTEMIC ANTI-CANCER THERAPY CYCLES PLANNED

Change to Data Element: Changed Name, Dataset, Description, status to Retired, linked Attribute

- Changed Name from Data Dictionary.Data_Field_Notes.N.Nu.NUMBER_OF_SYSTEMIC_ANTI-CANCER_THERAPY_CYCLES_PLANNED to Retired.Data_Dictionary.Data_Field_Notes.N.NUMBER_OF_SYSTEMIC_ANTI-CANCER_THERAPY_CYCLES_PLANNED
- null
- Changed Description
- Retired NUMBER OF SYSTEMIC ANTI-CANCER THERAPY CYCLES PLANNED
- null

ORGANISATION CODE (CODE OF PROVIDER)

Change to Data Element: Changed Dataset

Format/Length:	an3, an5 or an6
National Codes:	
ODS Default Codes:	89997 - Non-UK provider where no ORGANISATION CODE has been issued 89999 - Non-NHS UK provider where no ORGANISATION CODE has been issued

Notes:

[ORGANISATION CODE \(CODE OF PROVIDER\)](#) is the same as the attribute [ORGANISATION CODE](#).

[ORGANISATION CODE \(CODE OF PROVIDER\)](#) is the [ORGANISATION CODE](#) of the [Organisation acting as a Health Care Provider](#).

For [Commissioning Data Sets](#), the [ORGANISATION CODE \(CODE OF PROVIDER\)](#) should always be the [ORGANISATION CODE](#) of the [Health Care Provider](#) receiving the [National Tariff Payment System](#) income.

[ORGANISATION CODE \(CODE OF PROVIDER\)](#) is used by the [Secondary Uses Service](#) to derive the [Healthcare Resource Group 4](#). Failure to correctly populate this data element is likely to result in an incorrect [Healthcare Resource Group](#), usually associated with lower levels of healthcare resource.

For further information, please refer to the [NHS Digital](#) website at: [Payment by Results Guidance](#).

[ORGANISATION CODE \(CODE OF PROVIDER\)](#) will be replaced with [ORGANISATION IDENTIFIER \(CODE OF PROVIDER\)](#), when it has been approved for use in national information standards.

ORGANISATION IDENTIFIER (CODE OF PROVIDER)

Change to Data Element: Changed Dataset

Format/Length:	min an3 max an6
National Codes:	
ODS Default Codes:	89997 - Non-UK provider where no ORGANISATION IDENTIFIER has been issued 89999 - Non-NHS UK provider where no ORGANISATION IDENTIFIER has been issued

Notes:

ORGANISATION IDENTIFIER (CODE OF PROVIDER) is the same as the attribute **ORGANISATION IDENTIFIER**.

ORGANISATION IDENTIFIER (CODE OF PROVIDER) is the **ORGANISATION IDENTIFIER** of the **Organisation** acting as a **Health Care Provider**.

For **Commissioning Data Sets**, the **ORGANISATION IDENTIFIER (CODE OF PROVIDER)** should always be the **ORGANISATION IDENTIFIER** of the **Health Care Provider** receiving the **National Tariff Payment System** income.

ORGANISATION CODE (CODE OF PROVIDER) is used by the **Secondary Uses Service** to derive the **Healthcare Resource Group 4**. Failure to correctly populate this data element is likely to result in an incorrect **Healthcare Resource Group**, usually associated with lower levels of healthcare resource.

For further information, please refer to the **NHS Digital** website at: **Payment by Results Guidance**.

ORGANISATION CODE (CODE OF PROVIDER) will be replaced with **ORGANISATION IDENTIFIER (CODE OF PROVIDER)**, when it has been approved for use in national information standards.

ORGANISATION IDENTIFIER (OF SYSTEMIC ANTI-CANCER THERAPY ADMINISTRATION)

Change to Data Element: New Data Element

Format/Length:	min an3 max an6
National Codes:	
Default Codes:	

Notes:

ORGANISATION IDENTIFIER (OF SYSTEMIC ANTI-CANCER THERAPY ADMINISTRATION) is the same as the attribute **ORGANISATION IDENTIFIER**.

ORGANISATION IDENTIFIER (OF SYSTEMIC ANTI-CANCER THERAPY ADMINISTRATION) is the **ORGANISATION IDENTIFIER** of the **Organisation for a Systemic Anti-Cancer Therapy Drug Administration in a Systemic Anti-Cancer Therapy Drug Cycle**.

This data element is also known by these names:

Context	Alias
plural	ORGANISATION IDENTIFIERS (OF SYSTEMIC ANTI-CANCER THERAPY ADMINISTRATION)

ORGANISATION IDENTIFIER (OF SYSTEMIC ANTI-CANCER THERAPY ADMINISTRATION)

Change to Data Element: New Data Element

ORGANISATION IDENTIFIER (OF SYSTEMIC ANTI-CANCER THERAPY ADMINISTRATION)

Attribute:

<u>ORGANISATION IDENTIFIER</u>

OTHER SYSTEMIC ANTI-CANCER THERAPY CURATIVE TREATMENT NOT COMPLETED OUTCOME REASON

Change to Data Element: New Data Element

Format/Length:	max an55
----------------	----------

National Codes:

Default Codes:

Notes:

OTHER SYSTEMIC ANTI-CANCER THERAPY CURATIVE TREATMENT NOT COMPLETED OUTCOME REASON is the same as attribute **CLINICAL INTERVENTION TEXT STRING**.

OTHER SYSTEMIC ANTI-CANCER THERAPY CURATIVE TREATMENT NOT COMPLETED OUTCOME REASON is free text to specify the reason why the Systemic Anti-Cancer Therapy curative treatment was not completed, where the **SYSTEMIC ANTI-CANCER THERAPY CURATIVE TREATMENT NOT COMPLETED OUTCOME REASON** is National Code 'Other (not listed)'.

This data element is also known by these names:

Context	Alias
plural	OTHER SYSTEMIC ANTI-CANCER THERAPY CURATIVE TREATMENT NOT COMPLETED OUTCOME REASONS

OTHER SYSTEMIC ANTI-CANCER THERAPY CURATIVE TREATMENT NOT COMPLETED OUTCOME REASON

Change to Data Element: New Data Element

OTHER SYSTEMIC ANTI-CANCER THERAPY CURATIVE TREATMENT NOT COMPLETED OUTCOME REASON

Attribute:

CLINICAL INTERVENTION TEXT STRING

OTHER UNIT OF MEASUREMENT DESCRIPTION (SYSTEMIC ANTI-CANCER THERAPY)

Change to Data Element: New Data Element

Format/Length: max an15

National Codes:

Default Codes:

Notes:

OTHER UNIT OF MEASUREMENT DESCRIPTION (SYSTEMIC ANTI-CANCER THERAPY) is the same as attribute **OTHER UNIT OF MEASUREMENT DESCRIPTION FOR SYSTEMIC ANTI-CANCER THERAPY**.

This data element is also known by these names:

Context	Alias
plural	OTHER UNIT OF MEASUREMENT DESCRIPTIONS FOR SYSTEMIC ANTI-CANCER THERAPY

OTHER UNIT OF MEASUREMENT DESCRIPTION (SYSTEMIC ANTI-CANCER THERAPY)

Change to Data Element: New Data Element

OTHER UNIT OF MEASUREMENT DESCRIPTION (SYSTEMIC ANTI-CANCER THERAPY)

Attribute:

OTHER UNIT OF MEASUREMENT DESCRIPTION FOR SYSTEMIC ANTI-CANCER THERAPY

PERFORMANCE STATUS (ADULT)

Change to Data Element: Changed Dataset, Description

Format/Length:	an1
National Codes:	See PERFORMANCE STATUS FOR ADULTS
Default Codes:	9 - Not Recorded

Notes:

[PERFORMANCE STATUS \(ADULT\)](#) is the same as attribute [PERFORMANCE STATUS FOR ADULTS](#).

Code '9 - Not Recorded' is only valid in the [Cancer Outcomes and Services Data Set](#).

PERFORMANCE STATUS (ADULT START OF SYSTEMIC ANTI-CANCER THERAPY DRUG CYCLE)

Change to Data Element: New Data Element

Format/Length:	an1
National Codes:	See PERFORMANCE STATUS FOR ADULTS
Default Codes:	

Notes:

[PERFORMANCE STATUS \(ADULT START OF SYSTEMIC ANTI-CANCER THERAPY DRUG CYCLE\)](#) is the same as attribute [PERFORMANCE STATUS FOR ADULTS](#) recorded at the start of a [Systemic Anti-Cancer Therapy Drug Cycle](#).

This data element is also known by these names:

Context	Alias
plural	PERFORMANCE STATUSES (ADULT START OF SYSTEMIC ANTI-CANCER THERAPY DRUG CYCLE)

PERFORMANCE STATUS (ADULT START OF SYSTEMIC ANTI-CANCER THERAPY DRUG CYCLE)

Change to Data Element: New Data Element

[PERFORMANCE STATUS \(ADULT START OF SYSTEMIC ANTI-CANCER THERAPY DRUG CYCLE\)](#)

Attribute:

PERFORMANCE STATUS FOR ADULTS

PERFORMANCE STATUS (ADULT START OF SYSTEMIC ANTI-CANCER THERAPY DRUG REGIMEN)

Change to Data Element: New Data Element

Format/Length:	an1
National Codes:	See PERFORMANCE STATUS FOR ADULTS
Default Codes:	

Notes:

[PERFORMANCE STATUS \(ADULT START OF SYSTEMIC ANTI-CANCER THERAPY DRUG REGIMEN\)](#) is the same as attribute [PERFORMANCE STATUS FOR ADULTS](#) recorded at the start of a [Systemic Anti-Cancer Therapy Drug Regimen](#).

This data element is also known by these names:

Context	Alias
plural	PERFORMANCE STATUSES (ADULT START OF SYSTEMIC ANTI-CANCER THERAPY DRUG REGIMEN)

PERFORMANCE STATUS (ADULT START OF SYSTEMIC ANTI-CANCER THERAPY DRUG REGIMEN)

Change to Data Element: New Data Element

PERFORMANCE STATUS (ADULT START OF SYSTEMIC ANTI-CANCER THERAPY DRUG REGIMEN)

Attribute:

[PERFORMANCE STATUS FOR ADULTS](#)

PERFORMANCE STATUS (YOUNG PERSON) (RETIRED)_ renamed from PERFORMANCE STATUS (YOUNG PERSON)

Change to Data Element: Changed Name, Dataset, Description, status to Retired, linked Attribute

Format/Length:	an2
National Codes:	See PERFORMANCE STATUS FOR YOUNG PERSON
Default Codes:	

Notes:

~~[PERFORMANCE STATUS \(YOUNG PERSON\)](#) is the same as attribute [PERFORMANCE STATUS FOR YOUNG PERSON](#).~~ This item has been retired from the NHS Data Model and Dictionary.

The last live version of this item is available in the ?????? release of the NHS Data Model and Dictionary.

Access to this version can be obtained by emailing information.standards@nhs.net with "NHS Data Model and Dictionary - Archive Request" in the email subject line.

PERFORMANCE STATUS (YOUNG PERSON) (RETIRED)_ renamed from PERFORMANCE STATUS (YOUNG PERSON)

Change to Data Element: Changed Name, Dataset, Description, status to Retired, linked Attribute

PERFORMANCE STATUS (YOUNG PERSON)

Attribute:

[PERFORMANCE STATUS FOR YOUNG PERSON](#)

PERFORMANCE STATUS (YOUNG PERSON) (RETIRED)_ renamed from PERFORMANCE STATUS (YOUNG PERSON)

Change to Data Element: Changed Name, Dataset, Description, status to Retired, linked Attribute

- **Changed Name from Data Dictionary.Data_Field_Notes.P.Pe.PERFORMANCE STATUS_(YOUNG PERSON) to Retired.Data_Dictionary.Data_Field_Notes.P.PERFORMANCE STATUS_(YOUNG PERSON)**
- null
- **Changed Description**
- **Retired PERFORMANCE STATUS (YOUNG PERSON)**
- null

PERSON BIRTH DATE

Change to Data Element: Changed Dataset

Format/Length:	See DATE
NWDS ID:	PEBD
NWDS Field Name:	Date of Birth
National Codes:	
Default Codes:	

Notes:

PERSON BIRTH DATE is the same as attribute **PERSON BIRTH DATE**.

PERSON DEATH DATE

Change to Data Element: Changed Dataset

Format/Length:	See DATE
National Codes:	
Default Codes:	

Notes:

PERSON DEATH DATE is the same as attribute **PERSON DEATH DATE**.

PERSON FAMILY NAME

Change to Data Element: Changed Dataset

Format/Length:	max an35
NWDS ID:	PSUR
NWDS Field Name:	Surname
ESR Field Name:	Last Name
National Codes:	
Default Codes:	

Notes:

PERSON FAMILY NAME is the same as **PERSON NAME WORD TEXT** where the **PERSON NAME WORD TYPE** is classification 'Person Family Name'.

PERSON FAMILY NAME is the part of a **PERSON**'s name which is used to describe family, clan, tribal group, or marital association.

Note:

This was **e-GIF** approved for use in NHS England.

e-GIF and the **Government Data Standards Catalogue** have been archived and are available for reference only.

PERSON GENDER CODE CURRENT

Change to Data Element: Changed Dataset

Format/Length:	an1
National Codes:	See PERSON GENDER CODE
Default Codes:	

Notes:

PERSON GENDER CODE CURRENT is the same as attribute **PERSON GENDER CODE**.

PERSON GENDER CODE CURRENT is a **PERSON**'s gender currently.

PERSON GENDER CODE CURRENT is used by the **Secondary Uses Service** to derive the **Healthcare Resource Group 4**. Failure to correctly populate this data element is likely to result in an incorrect **Healthcare Resource Group**, usually associated with lower levels of healthcare resource.

For further information, please refer to the **NHS Digital** website at: **Payment by Results Guidance**.

PERSON GENDER CODE CURRENT will be replaced with **PERSON STATED GENDER CODE** or **PERSON PHENOTYPIC SEX**, which is the most recent approved national information standard to describe the required definition.

PERSON GIVEN NAME

Change to Data Element: Changed Dataset

Format/Length:	max an35
National Codes:	
Default Codes:	

Notes:

PERSON GIVEN NAME is the same as **PERSON NAME WORD TEXT** where the **PERSON NAME WORD TYPE** is classification 'Person Given Name'.

PERSON GIVEN NAME is the forename or given name of a **PERSON**.

For the **AIDC for Patient Identification Data Set**, **PERSON GIVEN NAME** must be displayed in accordance with the **NHS Common User Interface Information Standard - Patient Name Input and Display (ISB 1506)**.

Note:

This was **e-GIF** approved for use in NHS England.

e-GIF and the **Government Data Standards Catalogue** have been archived and are available for reference only.

PERSON HEIGHT IN METRES

Change to Data Element: Changed Dataset

Format/Length:	n1.max n2
National Codes:	
Default Codes:	

Notes:

PERSON HEIGHT IN METRES is the result of the **Clinical Investigation** which measures the **PATIENT's Height**, where the **UCUM UNIT OF MEASUREMENT** is 'Metres (m)'.
~~For the **Systemic Anti-Cancer Therapy Data Set**, **PERSON HEIGHT IN METRES** is the **Height** at the start of the **Systemic Anti-Cancer Drug Regimen**.~~

~~For the **Systemic Anti-Cancer Therapy Data Set**, **PERSON HEIGHT IN METRES** is the **Height** at the start of the **Systemic Anti-Cancer Therapy Drug Regimen**.~~

PERSON HEIGHT IN METRES (START OF SYSTEMIC ANTI-CANCER THERAPY DRUG REGIMEN)

Change to Data Element: New Data Element

Format/Length:	n1.max n2
National Codes:	
Default Codes:	

PERSON HEIGHT IN METRES (START OF SYSTEMIC ANTI-CANCER THERAPY DRUG REGIMEN) is the same as data element **PERSON HEIGHT IN METRES**.

PERSON HEIGHT IN METRES (START OF SYSTEMIC ANTI-CANCER THERAPY DRUG REGIMEN) is the **Height** at the start of the **Systemic Anti-Cancer Therapy Drug Regimen**.

PERSON HEIGHT IN METRES (START OF SYSTEMIC ANTI-CANCER THERAPY DRUG REGIMEN)

Change to Data Element: New Data Element

PERSON HEIGHT IN METRES (START OF SYSTEMIC ANTI-CANCER THERAPY DRUG REGIMEN)

Attribute:

CLINICAL INVESTIGATION RESULT VALUE

PERSON STATED GENDER CODE

Change to Data Element: Changed Dataset

Format/Length: an1
National Codes: See [PERSON STATED GENDER CODE](#)
Default Codes: X - Not Known ([PERSON STATED GENDER CODE](#) not recorded)

Notes:

[PERSON STATED GENDER CODE](#) is the same as attribute [PERSON STATED GENDER CODE](#).

[PERSON GENDER CODE CURRENT](#) will be replaced with [PERSON STATED GENDER CODE](#) or [PERSON PHENOTYPIC SEX](#), which is the most recent approved national information standard to describe the required definition.

PERSON WEIGHT

Change to Data Element: Changed Dataset, Description

Format/Length: max n3.max n3
National Codes:
Default Codes:

Notes:

[PERSON WEIGHT](#) is the result of the [Clinical Investigation](#) which measures the [PATIENT](#)'s [Weight](#), where the [UCUM UNIT OF MEASUREMENT](#) is 'Kilograms (kg)'.

Notes:

- For the [Commissioning Data Sets](#), [PERSON WEIGHT](#) must be padded to match the Format/Length pattern of n3.n3, for example 001.100 is a valid entry (1.1 is invalid)
- For [Neonatal Critical Care Minimum Data Set](#), [PERSON WEIGHT](#) will be the last recorded [Weight](#) on a particular [ACTIVITY DATE \(CRITICAL CARE\)](#)
- For the ~~[Systemic Anti-Cancer Therapy Data Set](#)~~, [PERSON WEIGHT](#) ~~is recorded at the start of the:~~
 - ~~[Systemic Anti-Cancer Drug Regimen](#)~~ and
 - ~~[Systemic Anti-Cancer Drug Cycle](#)~~.
- For the [Systemic Anti-Cancer Therapy Data Set](#), [PERSON WEIGHT](#) is the [Weight](#) at the start of the:
 - [Systemic Anti-Cancer Therapy Drug Regimen](#) and
 - [Systemic Anti-Cancer Therapy Drug Cycle](#).

PERSON WEIGHT (START OF SYSTEMIC ANTI-CANCER THERAPY DRUG CYCLE)

Change to Data Element: New Data Element

Format/Length: max n3.max n3
National Codes:

Default Codes:

Notes:

PERSON WEIGHT (START OF SYSTEMIC ANTI-CANCER THERAPY DRUG CYCLE) is the same as data element **PERSON WEIGHT**.

PERSON WEIGHT (START OF SYSTEMIC ANTI-CANCER THERAPY DRUG CYCLE) is the **Weight** at the start of the **Systemic Anti-Cancer Therapy Drug Cycle**.

PERSON WEIGHT (START OF SYSTEMIC ANTI-CANCER THERAPY DRUG CYCLE)

Change to Data Element: New Data Element

PERSON WEIGHT (START OF SYSTEMIC ANTI-CANCER THERAPY DRUG CYCLE)

Attribute:

CLINICAL INVESTIGATION RESULT VALUE

PERSON WEIGHT (START OF SYSTEMIC ANTI-CANCER THERAPY DRUG REGIMEN)

Change to Data Element: New Data Element

Format/Length: max n3.max n3

National Codes:

Default Codes:

Notes:

PERSON WEIGHT (START OF SYSTEMIC ANTI-CANCER THERAPY DRUG REGIMEN) is the same as data element **PERSON WEIGHT**.

PERSON WEIGHT (START OF SYSTEMIC ANTI-CANCER THERAPY DRUG REGIMEN) is the **Weight** at the start of the **Systemic Anti-Cancer Therapy Drug Regimen**.

PERSON WEIGHT (START OF SYSTEMIC ANTI-CANCER THERAPY DRUG REGIMEN)

Change to Data Element: New Data Element

PERSON WEIGHT (START OF SYSTEMIC ANTI-CANCER THERAPY DRUG REGIMEN)

Attribute:

CLINICAL INVESTIGATION RESULT VALUE

PLANNED TREATMENT CHANGE REASON (RETIRED) renamed from **PLANNED TREATMENT CHANGE REASON**

Change to Data Element: Changed Name, Dataset, Description, status to Retired, linked Attribute

Format/Length: an1

National Codes: See [PLANNED TREATMENT CHANGE REASON](#)

Default Codes: 9 - Not known

Notes:

~~**PLANNED TREATMENT CHANGE REASON** is the same as attribute **PLANNED TREATMENT CHANGE REASON**. This item has been retired from the NHS Data Model and Dictionary.~~

The last live version of this item is available in the ?????? release of the NHS Data Model and Dictionary.

Access to this version can be obtained by emailing information.standards@nhs.net with "NHS Data Model and Dictionary - Archive Request" in the email subject line.

PLANNED TREATMENT CHANGE REASON (RETIRED) renamed from **PLANNED TREATMENT CHANGE REASON**

Change to Data Element: Changed Name, Dataset, Description, status to Retired, linked Attribute

PLANNED TREATMENT CHANGE REASON

Attribute:

[PLANNED TREATMENT CHANGE REASON](#)

PLANNED TREATMENT CHANGE REASON (RETIRED) renamed from **PLANNED TREATMENT CHANGE REASON**

Change to Data Element: Changed Name, Dataset, Description, status to Retired, linked Attribute

- **Changed** Name from **Data_Dictionary.Data_Field_Notes.P.PI.PLANNED_TREATMENT_CHANGE_REASON** to **Retired.Data_Dictionary.Data_Field_Notes.P.PLANNED_TREATMENT_CHANGE_REASON**
- **null**
- **Changed Description**
- **Retired PLANNED TREATMENT CHANGE REASON**
- **null**

POSTCODE OF USUAL ADDRESS

Change to Data Element: Changed Dataset

Format/Length: See [POSTCODE](#)

National Codes:

Default Codes:

Notes:

[POSTCODE OF USUAL ADDRESS](#) is the same as data element [POSTCODE](#).

[POSTCODE OF USUAL ADDRESS](#) is the [POSTCODE](#) of the [ADDRESS](#) nominated by the [PATIENT](#) where the [ADDRESS ASSOCIATION TYPE](#) is 'Main Permanent Residence' or 'Other Permanent Residence'.

PRIMARY DIAGNOSIS (ICD AT START SYSTEMIC ANTI-CANCER THERAPY)

Change to Data Element: Changed Dataset, Description

Format/Length: See [ICD-10 CODE](#)

National Codes:

Default Codes:

Notes:

[PRIMARY DIAGNOSIS \(ICD AT START SYSTEMIC ANTI-CANCER THERAPY\)](#) is the same as attribute [CLINICAL CLASSIFICATION CODE](#).

~~For the [Systemic Anti-Cancer Therapy Data Set](#), [PRIMARY DIAGNOSIS \(ICD AT START SYSTEMIC ANTI-CANCER THERAPY\)](#) is the [PRIMARY DIAGNOSIS](#) at the start of the [Chemotherapy](#).~~ [PRIMARY DIAGNOSIS \(ICD AT START SYSTEMIC ANTI-CANCER THERAPY\)](#) is the [PRIMARY DIAGNOSIS \(ICD\)](#) at the start of the [Systemic Anti-Cancer Therapy](#).

PRIMARY PROCEDURE (OPCS)

Change to Data Element: Changed Dataset

Format/Length: See [OPCS-4 CODE](#)
National Codes:
Default Codes:

Notes:

[PRIMARY PROCEDURE \(OPCS\)](#) is the same as attribute [CLINICAL CLASSIFICATION CODE](#).

[PRIMARY PROCEDURE \(OPCS\)](#) is the [OPCS Classification of Interventions and Procedures](#) code which is used to identify the primary [Patient Procedure](#) carried out.

ROUTE OF ADMINISTRATION (SNOMED CT DM+D)

Change to Data Element: Changed Dataset

Format/Length: See [DM+D CODE](#)
National Codes:
Default Codes:

Notes:

[ROUTE OF ADMINISTRATION \(SNOMED CT DM+D\)](#) is the same as attribute [CLINICAL TERMINOLOGY CODE](#).

~~This item is being used for development purposes and has not yet been approved.~~ [ROUTE OF ADMINISTRATION \(SNOMED CT DM+D\)](#) is the SNOMED CT® concept ID from the NHS Dictionary of Medicines and Devices which is used to identify the route of administration.

SNOMED CT Subset Metadata:

- **Subset Name:** NHS e-Prescribing route of administration subset
- **Subset Original Id:** 30201000001137
- **Refset FSN:** ePrescribing route of administration simple reference set (foundation metadata concept)
- **Refset Id :** 999000051000001100

For further details relating to the [SNOMED CT Subset Metadata](#), see the [Data Dictionary for Care \(DD4C\)](#) website at: [NHS e-Prescribing route of administration subset](#).

START DATE (FINAL SYSTEMIC ANTI-CANCER THERAPY) (RETIRED) renamed from **START DATE (FINAL SYSTEMIC ANTI-CANCER THERAPY)**

Change to Data Element: Changed Name, Dataset, Description, status to Retired, linked Attribute

Format/Length: See [DATE](#)
National Codes:
Default Codes:

Notes:

~~[START DATE \(FINAL SYSTEMIC ANTI-CANCER THERAPY\)](#) is the same as attribute [ACTIVITY DATE](#) where the [ACTIVITY DATE TYPE](#) is National Code '[Start Date](#)' of the [Systemic Anti-Cancer Drug Regimen](#).~~

~~[START DATE \(FINAL SYSTEMIC ANTI-CANCER THERAPY\)](#) is the [Start Date](#) of the final cycle of [Chemotherapy](#) within a [Systemic Anti-Cancer Drug Regimen](#), which is the [End Date](#) of the [Chemotherapy](#) treatment. This item has been retired from the NHS Data Model and Dictionary.~~

The last live version of this item is available in the [??????](#) release of the NHS Data Model and Dictionary.

Access to this version can be obtained by emailing information.standards@nhs.net with "NHS Data Model and Dictionary - Archive Request" in the email subject line.

START DATE (FINAL SYSTEMIC ANTI-CANCER THERAPY) (RETIRED)_ renamed from START DATE (FINAL SYSTEMIC ANTI-CANCER THERAPY)

Change to Data Element: Changed Name, Dataset, Description, status to Retired, linked Attribute

START DATE (FINAL SYSTEMIC ANTI-CANCER THERAPY)

Attribute:

[ACTIVITY DATE](#)

START DATE (FINAL SYSTEMIC ANTI-CANCER THERAPY) (RETIRED)_ renamed from START DATE (FINAL SYSTEMIC ANTI-CANCER THERAPY)

Change to Data Element: Changed Name, Dataset, Description, status to Retired, linked Attribute

- Changed Name from Data_Dictionary.Data_Field_Notes.S.Star.START_DATE_(FINAL_SYSTEMIC_ANTI-CANCER_THERAPY) to Retired.Data_Dictionary.Data_Field_Notes.S.START_DATE_(FINAL_SYSTEMIC_ANTI-CANCER_THERAPY)
- null
- Changed Description
- Retired START DATE (FINAL SYSTEMIC ANTI-CANCER THERAPY)
- null

START DATE (SYSTEMIC ANTI-CANCER THERAPY DRUG CYCLE)_ renamed from START DATE (SYSTEMIC ANTI-CANCER DRUG CYCLE)

Change to Data Element: Changed Name, Dataset, Description

Format/Length: See [DATE](#)
National Codes:
Default Codes:

Notes:

~~START DATE (FINAL SYSTEMIC ANTI-CANCER THERAPY) is the same as attribute [ACTIVITY DATE](#) where the [ACTIVITY DATE TYPE](#) is National Code '[Start Date](#)' of the [Systemic Anti-Cancer Drug Cycle](#). START DATE (SYSTEMIC ANTI-CANCER THERAPY DRUG CYCLE) is the same as attribute [ACTIVITY DATE](#) where the [ACTIVITY DATE TYPE](#) is National Code '[Start Date](#)' of the [Systemic Anti-Cancer Therapy Drug Cycle](#).~~

~~START DATE (SYSTEMIC ANTI-CANCER DRUG CYCLE) is the date of the first drug administration in each [Systemic Anti-Cancer Drug Cycle](#). START DATE (SYSTEMIC ANTI-CANCER THERAPY DRUG CYCLE) is the DATE of the first [Systemic Anti-Cancer Therapy Drug Administration](#) in a [Systemic Anti-Cancer Therapy Drug Cycle](#).~~

START DATE (SYSTEMIC ANTI-CANCER THERAPY DRUG CYCLE)_ renamed from START DATE (SYSTEMIC ANTI-CANCER DRUG CYCLE)

Change to Data Element: Changed Name, Dataset, Description

- Changed Name from Data_Dictionary.Data_Field_Notes.S.Star.START_DATE_(SYSTEMIC_ANTI-CANCER_DRUG_CYCLE) to Data_Dictionary.Data_Field_Notes.S.Star.START_DATE_(SYSTEMIC_ANTI-CANCER_THERAPY_DRUG_CYCLE)
- null
- Changed Description

START DATE (SYSTEMIC ANTI-CANCER THERAPY DRUG REGIMEN)_ renamed from START DATE (ANTI-CANCER DRUG REGIMEN)

Change to Data Element: Changed Name, Dataset, Description

Format/Length:	See DATE
National Codes:	
Default Codes:	

Notes:

~~START DATE (ANTI-CANCER DRUG REGIMEN) is the same as attribute [ACTIVITY DATE](#) where the [ACTIVITY DATE TYPE](#) is National Code '[Start Date](#)' of the [Anti-Cancer Drug Regimen](#).~~

~~This should be recorded if the [First Definitive Treatment](#) is [Chemotherapy](#) and/or other anti-cancer drug treatments.~~

~~START DATE (ANTI-CANCER DRUG REGIMEN) is the [ACTIVITY DATE](#) of the [Anti-Cancer Drug Programme](#) where the [Planned Cancer Treatment](#) is for [PLANNED CANCER TREATMENT TYPE](#) National Code '[Chemotherapy](#)' or '[Hormone Therapy](#)' and [FIRST DEFINITIVE TREATMENT PROVIDED](#) is classification '[First Definitive Treatment planned](#)'.~~

START DATE (SYSTEMIC ANTI-CANCER THERAPY DRUG REGIMEN) is the same as attribute [ACTIVITY DATE](#) where the [ACTIVITY DATE TYPE](#) is National Code '[Start Date](#)' of the first cycle of a [Systemic Anti-Cancer Therapy Drug Regimen](#).

START DATE (SYSTEMIC ANTI-CANCER THERAPY DRUG REGIMEN)_ renamed from START DATE (ANTI-CANCER DRUG REGIMEN)

Change to Data Element: Changed Name, Dataset, Description

- Changed Name from Data Dictionary.Data_Field_Notes.S.Star.START_DATE (ANTI-CANCER DRUG REGIMEN) to Data Dictionary.Data_Field_Notes.S.Star.START_DATE (SYSTEMIC ANTI-CANCER THERAPY DRUG REGIMEN)
- null
- Changed Description

SYSTEMIC ANTI-CANCER THERAPY ACTUAL DOSE_ renamed from CHEMOTHERAPY ACTUAL DOSE

Change to Data Element: Changed Name, Dataset, Description

Format/Length:	max n7
Format/Length:	max n8
National Codes:	
Default Codes:	

Notes:

~~CHEMOTHERAPY ACTUAL DOSE is the same as attribute [CHEMOTHERAPY ACTUAL DOSE](#).~~

~~For the [Systemic Anti-Cancer Therapy Data Set](#), the actual [Chemotherapy](#) dose can be given in '[Milligrams \(mg\)](#)' or other applicable units, for example, 400 milligrams, 200 units, 1.5 grams etc.~~

SYSTEMIC ANTI-CANCER THERAPY ACTUAL DOSE is the same as attribute [SYSTEMIC ANTI-CANCER THERAPY ACTUAL DOSE](#).

SYSTEMIC ANTI-CANCER THERAPY ACTUAL DOSE_ renamed from CHEMOTHERAPY ACTUAL DOSE

Change to Data Element: Changed Name, Dataset, Description

- Changed Name from Data Dictionary.Data_Field_Notes.C.Ce.CHEMOTHERAPY ACTUAL DOSE to Data Dictionary.Data_Field_Notes.S.Sy.SYSTEMIC ANTI-CANCER THERAPY ACTUAL DOSE
- null
- Changed Description

SYSTEMIC ANTI-CANCER THERAPY ADMINISTRATION DATE

Change to Data Element: Changed Dataset, Description

Format/Length:	See DATE
National Codes:	
Default Codes:	

Notes:

~~**SYSTEMIC ANTI-CANCER THERAPY ADMINISTRATION DATE** is the same as attribute **ACTIVITY DATE** where the **ACTIVITY DATE TYPE** is National Code '[Care Contact Date](#)'.~~ **SYSTEMIC ANTI-CANCER THERAPY ADMINISTRATION DATE** is the same as attribute **ACTIVITY DATE** where the **ACTIVITY DATE TYPE** is National Code '[Care Contact Date](#)'.

~~**SYSTEMIC ANTI-CANCER THERAPY ADMINISTRATION DATE** is the **DATE** on which the **Chemotherapy** was administered to a **PATIENT**, an infusion commenced, or an oral drug was initially dispensed to the **PATIENT**.~~ **SYSTEMIC ANTI-CANCER THERAPY ADMINISTRATION DATE** is the **DATE** of the **Systemic Anti-Cancer Therapy Drug Administration** or the **DATE** an oral drug was initially dispensed to the **PATIENT**.

SYSTEMIC ANTI-CANCER THERAPY ADMINISTRATION DATE:

- ~~Identifies each contact between the **PATIENT** and the **Chemotherapy CARE PROFESSIONAL TEAM** when **Chemotherapy** is administered~~
- ~~Is recorded for:~~
 - ~~Admitted **PATIENT** treatment, **Chemotherapy Out-Patient** **Clinic** attendances, attendances in a primary care setting and domiciliary administration by a specialist team (i.e. oncology, haematology or paediatrics)~~
 - ~~Infusions, the day the infusion was commenced and~~
 - ~~Continuous oral **Chemotherapy**, the first day of the nominal cycle i.e. one **Systemic Anti-Cancer Therapy Administration Date** per 28 days.~~

SYSTEMIC ANTI-CANCER THERAPY CURATIVE TREATMENT COMPLETED AS PLANNED INDICATOR

Change to Data Element: New Data Element

Format/Length:	an1
National Codes:	See SYSTEMIC ANTI-CANCER THERAPY CURATIVE TREATMENT COMPLETED AS PLANNED INDICATOR
Default Codes:	

Notes:

SYSTEMIC ANTI-CANCER THERAPY CURATIVE TREATMENT COMPLETED AS PLANNED INDICATOR is the same as attribute **SYSTEMIC ANTI-CANCER THERAPY CURATIVE TREATMENT COMPLETED AS PLANNED INDICATOR**.

This data element is also known by these names:

Context	Alias
plural	SYSTEMIC ANTI-CANCER THERAPY CURATIVE TREATMENT COMPLETED AS PLANNED INDICATORS

SYSTEMIC ANTI-CANCER THERAPY CURATIVE TREATMENT COMPLETED AS PLANNED INDICATOR

Change to Data Element: New Data Element

SYSTEMIC ANTI-CANCER THERAPY CURATIVE TREATMENT COMPLETED AS PLANNED INDICATOR

Attribute:

SYSTEMIC ANTI-CANCER THERAPY CURATIVE TREATMENT COMPLETED AS PLANNED INDICATOR

SYSTEMIC ANTI-CANCER THERAPY CURATIVE TREATMENT NOT COMPLETED OUTCOME REASON

Change to Data Element: New Data Element

Format/Length: an1
National Codes: See SYSTEMIC ANTI-CANCER THERAPY CURATIVE TREATMENT NOT COMPLETED OUTCOME REASON
Default Codes:

Notes:

SYSTEMIC ANTI-CANCER THERAPY CURATIVE TREATMENT NOT COMPLETED OUTCOME REASON is the same as attribute SYSTEMIC ANTI-CANCER THERAPY CURATIVE TREATMENT NOT COMPLETED OUTCOME REASON.

This data element is also known by these names:

Context	Alias
plural	SYSTEMIC ANTI-CANCER THERAPY CURATIVE TREATMENT NOT COMPLETED OUTCOME REASONS

SYSTEMIC ANTI-CANCER THERAPY CURATIVE TREATMENT NOT COMPLETED OUTCOME REASON

Change to Data Element: New Data Element

SYSTEMIC ANTI-CANCER THERAPY CURATIVE TREATMENT NOT COMPLETED OUTCOME REASON

Attribute:

SYSTEMIC ANTI-CANCER THERAPY CURATIVE TREATMENT NOT COMPLETED OUTCOME REASON

SYSTEMIC ANTI-CANCER THERAPY DRUG (SNOMED CT DM+D)

Change to Data Element: New Data Element

Format/Length: See DM+D CODE
National Codes:
Default Codes:

Notes:

SYSTEMIC ANTI-CANCER THERAPY DRUG (SNOMED CT DM+D) is the same as attribute CLINICAL TERMINOLOGY CODE.

SYSTEMIC ANTI-CANCER THERAPY DRUG (SNOMED CT DM+D) is the SNOMED CT® concept ID from the NHS Dictionary of Medicines and Devices which is used to identify the Systemic Anti-Cancer Therapy drug given to a PATIENT.

This data element is also known by these names:

Context	Alias
plural	SYSTEMIC ANTI-CANCER THERAPY DRUGS (SNOMED CT DM+D)

SYSTEMIC ANTI-CANCER THERAPY DRUG (SNOMED CT DM+D)

Change to Data Element: New Data Element

SYSTEMIC ANTI-CANCER THERAPY DRUG (SNOMED CT DM+D)

Attribute:

CLINICAL TERMINOLOGY CODE

SYSTEMIC ANTI-CANCER THERAPY DRUG CYCLE IDENTIFIER_ renamed from ANTI-CANCER DRUG CYCLE IDENTIFIER

Change to Data Element: Changed Name, Dataset, Description

Format/Length:	max-n2
Format/Length:	max n3
National Codes:	
Default Codes:	

Notes:

~~ANTI-CANCER DRUG CYCLE IDENTIFIER is a unique identifier for an Anti-Cancer Drug Cycle within an Anti-Cancer Drug Regimen.~~ SYSTEMIC ANTI-CANCER THERAPY DRUG CYCLE IDENTIFIER is the same as attribute ACTIVITY IDENTIFIER.

~~Anti-Cancer Drug Cycles are numbered sequentially within an Anti-Cancer Drug Regimen.~~ SYSTEMIC ANTI-CANCER THERAPY DRUG CYCLE IDENTIFIER is a unique identifier for a Systemic Anti-Cancer Therapy Drug Cycle within a Systemic Anti-Cancer Therapy Drug Regimen.

Systemic Anti-Cancer Therapy Drug Cycles are numbered sequentially within a Systemic Anti-Cancer Therapy Drug Regimen.

SYSTEMIC ANTI-CANCER THERAPY DRUG CYCLE IDENTIFIER_ renamed from ANTI-CANCER DRUG CYCLE IDENTIFIER

Change to Data Element: Changed Name, Dataset, Description

- Changed Name from Data_Dictionary.Data_Field_Notes.A.An.ANTI-CANCER_DRUG_CYCLE_IDENTIFI ER to Data_Dictionary.Data_Field_Notes.S.Sy.SYSTEMIC_ANTI-CANCER_THERAPY_DRUG_CYCLE_IDENTIFI ER
- null
- Changed Description

SYSTEMIC ANTI-CANCER THERAPY DRUG NAME_ renamed from SYSTEMIC ANTI-CANCER DRUG NAME

Change to Data Element: Changed Name, Dataset, Description

Format/Length:	max-an35
Format/Length:	max an55
National Codes:	
Default Codes:	

Notes:

~~SYSTEMIC ANTI-CANCER DRUG NAME is the same as attribute SYSTEMIC ANTI-CANCER DRUG NAME.~~ SYSTEMIC ANTI-CANCER THERAPY DRUG NAME is the same as attribute SYSTEMIC ANTI-CANCER THERAPY DRUG NAME.

SYSTEMIC ANTI-CANCER THERAPY DRUG NAME_ renamed from SYSTEMIC ANTI-CANCER DRUG NAME

Change to Data Element: Changed Name, Dataset, Description

- Changed Name from Data_Dictionary.Data_Field_Notes.S.Sy.SYSTEMIC_ANTI-CANCER_DRUG_NAME to Data_Dictionary.Data_Field_Notes.S.Sy.SYSTEMIC_ANTI-CANCER_THERAPY_DRUG_NAME
- null

- **Changed Description**

SYSTEMIC ANTI-CANCER THERAPY DRUG REGIMEN ACRONYM_ renamed from **DRUG REGIMEN ACRONYM**

Change to Data Element: Changed Name, Dataset, Description

Format/Length:	max an35
Format/Length:	max an150
National Codes:	
Default Codes:	

Notes:

~~DRUG REGIMEN ACRONYM~~ is the same as attribute ~~DRUG REGIMEN ACRONYM~~. **SYSTEMIC ANTI-CANCER THERAPY DRUG REGIMEN ACRONYM_ is the same as attribute **SYSTEMIC ANTI-CANCER THERAPY DRUG REGIMEN ACRONYM_**.**

SYSTEMIC ANTI-CANCER THERAPY DRUG REGIMEN ACRONYM_ renamed from **DRUG REGIMEN ACRONYM**

Change to Data Element: Changed Name, Dataset, Description

- **Changed Name from Data Dictionary.Data Field Notes.D.Dr.DRUG_REGIMEN_ACRONYM to Data Dictionary.Data Field Notes.S.Sy.SYSTEMIC_ANTI-CANCER_THERAPY_DRUG_REGIMEN_ACRONYM_**
- **null**
- **Changed Description**

SYSTEMIC ANTI-CANCER THERAPY DRUG REGIMEN MODIFICATION INDICATOR (DOSE REDUCTION)_ renamed from **SYSTEMIC ANTI-CANCER THERAPY REGIMEN MODIFICATION INDICATOR (DOSE REDUCTION)**

Change to Data Element: Changed Name, Dataset, Description

Format/Length:	an1
National Codes:	See SYSTEMIC ANTI-CANCER THERAPY REGIMEN MODIFICATION INDICATOR
National Codes:	See SYSTEMIC ANTI-CANCER THERAPY DRUG REGIMEN MODIFICATION INDICATOR FOR DOSE REDUCTION
Default Codes:	

Notes:

~~SYSTEMIC ANTI-CANCER THERAPY REGIMEN MODIFICATION INDICATOR (DOSE REDUCTION)~~ is the same as attribute ~~SYSTEMIC ANTI-CANCER THERAPY REGIMEN MODIFICATION INDICATOR~~.

~~An indication of whether a [Systemic Anti-Cancer Drug Regimen](#) was modified by reducing the dose administered.~~

SYSTEMIC ANTI-CANCER THERAPY DRUG REGIMEN MODIFICATION INDICATOR (DOSE REDUCTION) is the same as attribute SYSTEMIC ANTI-CANCER THERAPY DRUG REGIMEN MODIFICATION INDICATOR FOR DOSE REDUCTION.

SYSTEMIC ANTI-CANCER THERAPY DRUG REGIMEN MODIFICATION INDICATOR (DOSE REDUCTION)_ renamed from **SYSTEMIC ANTI-CANCER THERAPY REGIMEN MODIFICATION INDICATOR (DOSE REDUCTION)**

Change to Data Element: Changed Name, Dataset, Description

- **Changed Name from Data Dictionary.Data Field Notes.S.Sy.SYSTEMIC_ANTI-CANCER_THERAPY_REGIMEN_MODIFICATION_INDICATOR (DOSE REDUCTION) to Data Dictionary.Data Field Notes.S.Sy.SYSTEMIC_ANTI-CANCER_THERAPY_DRUG_REGIMEN_MODIFICATION_INDICATOR (DOSE REDUCTION)**
- **null**
- **Changed Description**

SYSTEMIC ANTI-CANCER THERAPY DRUG REGIMEN TREATMENT INTENT_ renamed from DRUG TREATMENT INTENT

Change to Data Element: Changed Name, Dataset, Description

Format/Length:	an4
National Codes:	See DRUG TREATMENT INTENT
Default Codes:	9 - Not known (Not Recorded)
Format/Length:	an2
National Codes:	See SYSTEMIC ANTI-CANCER THERAPY DRUG REGIMEN TREATMENT INTENT
Default Codes:	99 - Not Known (Not Recorded)

Notes:

[DRUG TREATMENT INTENT](#) is the same as attribute [DRUG TREATMENT INTENT](#). [SYSTEMIC ANTI-CANCER THERAPY DRUG REGIMEN TREATMENT INTENT](#) is the same as attribute [SYSTEMIC ANTI-CANCER THERAPY DRUG REGIMEN TREATMENT INTENT](#).

SYSTEMIC ANTI-CANCER THERAPY DRUG REGIMEN TREATMENT INTENT_ renamed from DRUG TREATMENT INTENT

Change to Data Element: Changed Name, Dataset, Description

- **Changed Name from [Data Dictionary.Data Field Notes.D.Dr.DRUG_TREATMENT_INTENT](#) to [Data Dictionary.Data Field Notes.S.Sy.SYSTEMIC_ANTI-CANCER_THERAPY_DRUG_REGIMEN_TREATMENT_INTENT](#)**
- **null**
- **Changed Description**

SYSTEMIC ANTI-CANCER THERAPY DRUG ROUTE OF ADMINISTRATION

Change to Data Element: Changed Dataset

Format/Length:	an2
National Codes:	See SYSTEMIC ANTI-CANCER THERAPY DRUG ROUTE OF ADMINISTRATION
Default Codes:	

Notes:

[SYSTEMIC ANTI-CANCER THERAPY DRUG ROUTE OF ADMINISTRATION](#) is the same as attribute [SYSTEMIC ANTI-CANCER THERAPY DRUG ROUTE OF ADMINISTRATION](#).

SYSTEMIC ANTI-CANCER THERAPY NON CURATIVE TREATMENT PATIENT BENEFIT INDICATOR

Change to Data Element: New Data Element

Format/Length:	an1
National Codes:	See SYSTEMIC ANTI-CANCER THERAPY NON CURATIVE TREATMENT PATIENT BENEFIT INDICATOR
Default Codes:	

Notes:

[SYSTEMIC ANTI-CANCER THERAPY NON CURATIVE TREATMENT PATIENT BENEFIT INDICATOR](#) is the same as attribute [SYSTEMIC ANTI-CANCER THERAPY NON CURATIVE TREATMENT PATIENT BENEFIT INDICATOR](#).

This data element is also known by these names:

Context	Alias
plural	SYSTEMIC ANTI-CANCER THERAPY NON CURATIVE TREATMENT PATIENT BENEFIT INDICATORS

SYSTEMIC ANTI-CANCER THERAPY NON CURATIVE TREATMENT PATIENT BENEFIT INDICATOR

Change to Data Element: New Data Element

SYSTEMIC ANTI-CANCER THERAPY NON CURATIVE TREATMENT PATIENT BENEFIT INDICATOR

Attribute:

SYSTEMIC ANTI-CANCER THERAPY NON CURATIVE TREATMENT PATIENT BENEFIT INDICATOR

SYSTEMIC ANTI-CANCER THERAPY PROGRAMME NUMBER (RETIRED)_ renamed from SYSTEMIC ANTI-CANCER THERAPY PROGRAMME NUMBER

Change to Data Element: Changed Name, Dataset, Description, status to Retired, linked Attribute

Format/Length: max n2
National Codes:
Default Codes:

Notes:

~~SYSTEMIC ANTI-CANCER THERAPY PROGRAMME NUMBER~~ is the same as attribute ~~SYSTEMIC ANTI-CANCER THERAPY PROGRAMME NUMBER~~. This item has been retired from the NHS Data Model and Dictionary.

The last live version of this item is available in the ?????? release of the NHS Data Model and Dictionary.

Access to this version can be obtained by emailing information.standards@nhs.net with "NHS Data Model and Dictionary - Archive Request" in the email subject line.

SYSTEMIC ANTI-CANCER THERAPY PROGRAMME NUMBER (RETIRED)_ renamed from SYSTEMIC ANTI-CANCER THERAPY PROGRAMME NUMBER

Change to Data Element: Changed Name, Dataset, Description, status to Retired, linked Attribute

SYSTEMIC ANTI-CANCER THERAPY PROGRAMME NUMBER

Attribute:

SYSTEMIC ANTI-CANCER THERAPY PROGRAMME NUMBER

SYSTEMIC ANTI-CANCER THERAPY PROGRAMME NUMBER (RETIRED)_ renamed from SYSTEMIC ANTI-CANCER THERAPY PROGRAMME NUMBER

Change to Data Element: Changed Name, Dataset, Description, status to Retired, linked Attribute

- Changed Name from Data Dictionary.Data_Field_Notes.S.Sy.SYSTEMIC_ANTI-CANCER_THERAPY_PROGRAMME_NUMBER to Retired.Data_Dictionary.Data_Field_Notes.S.SYSTEMIC_ANTI-CANCER_THERAPY_PROGRAMME_NUMBER
- null
- Changed Description
- Retired SYSTEMIC ANTI-CANCER THERAPY PROGRAMME NUMBER
- null

SYSTEMIC ANTI-CANCER THERAPY REGIMEN MODIFICATION INDICATOR (DAYS REDUCED) (RETIRED)_ renamed from SYSTEMIC ANTI-CANCER THERAPY REGIMEN MODIFICATION INDICATOR (DAYS REDUCED)

Change to Data Element: Changed Name, Dataset, Description, status to Retired, linked Attribute

Format/Length: an1
National Codes: See [SYSTEMIC ANTI-CANCER THERAPY REGIMEN MODIFICATION INDICATOR](#)
Default Codes:

Notes:

~~SYSTEMIC ANTI-CANCER THERAPY REGIMEN MODIFICATION INDICATOR (DAYS REDUCED)~~ is the same as attribute ~~SYSTEMIC ANTI-CANCER THERAPY REGIMEN MODIFICATION INDICATOR~~.

An indication of whether a ~~Systemic Anti-Cancer Drug Regimen~~ was modified by reducing the administration days below the number planned. This item has been retired from the NHS Data Model and Dictionary.

Note: This is only applicable where a fixed number of cycles were specified at the start of treatment. The last live version of this item is available in the ?????? release of the NHS Data Model and Dictionary.

Access to this version can be obtained by emailing information.standards@nhs.net with "NHS Data Model and Dictionary - Archive Request" in the email subject line.

SYSTEMIC ANTI-CANCER THERAPY REGIMEN MODIFICATION INDICATOR (DAYS REDUCED) (RETIRED)_ renamed from SYSTEMIC ANTI-CANCER THERAPY REGIMEN MODIFICATION INDICATOR (DAYS REDUCED)

Change to Data Element: Changed Name, Dataset, Description, status to Retired, linked Attribute

~~SYSTEMIC ANTI-CANCER THERAPY REGIMEN MODIFICATION INDICATOR (DAYS REDUCED)~~

Attributes:

[SYSTEMIC ANTI-CANCER THERAPY REGIMEN MODIFICATION INDICATOR](#)

SYSTEMIC ANTI-CANCER THERAPY REGIMEN MODIFICATION INDICATOR (DAYS REDUCED) (RETIRED)_ renamed from SYSTEMIC ANTI-CANCER THERAPY REGIMEN MODIFICATION INDICATOR (DAYS REDUCED)

Change to Data Element: Changed Name, Dataset, Description, status to Retired, linked Attribute

- Changed Name from Data Dictionary.Data_Field_Notes.S.Sy.SYSTEMIC_ANTI-CANCER_THERAPY_REGIMEN_MODIFICATION_INDICATOR_(DAYS_REDUCED) to Retired.Data Dictionary.Data_Field_Notes.S.SYSTEMIC_ANTI-CANCER_THERAPY_REGIMEN_MODIFICATION_INDICATOR_(DAYS_REDUCED)
- null
- Changed Description
- Retired SYSTEMIC ANTI-CANCER THERAPY REGIMEN MODIFICATION INDICATOR (DAYS REDUCED)
- null

SYSTEMIC ANTI-CANCER THERAPY REGIMEN MODIFICATION INDICATOR (TIME DELAY) (RETIRED)_ renamed from SYSTEMIC ANTI-CANCER THERAPY REGIMEN MODIFICATION INDICATOR (TIME DELAY)

Change to Data Element: Changed Name, Dataset, Description, status to Retired, linked Attribute

Format/Length:	an4
National Codes:	See SYSTEMIC ANTI-CANCER THERAPY REGIMEN MODIFICATION INDICATOR
Default Codes:	

Notes:

~~SYSTEMIC ANTI-CANCER THERAPY REGIMEN MODIFICATION INDICATOR (TIME DELAY)~~ is the same as attribute ~~SYSTEMIC ANTI-CANCER THERAPY REGIMEN MODIFICATION INDICATOR~~.

An indication of whether a ~~Systemic Anti-Cancer Drug Regimen~~ was modified by extending the time between ~~SYSTEMIC ANTI-CANCER THERAPY ADMINISTRATION DATES~~. This item has been retired from the NHS Data Model and Dictionary.

Note: Time delays of 5 days or fewer are discounted to allow for bank holidays or other incidental interruptions not related to drug tolerance. The last live version of this item is available in the ?????? release of the NHS Data Model and Dictionary.

Access to this version can be obtained by emailing information.standards@nhs.net with "NHS Data Model and Dictionary - Archive Request" in the email subject line.

SYSTEMIC ANTI-CANCER THERAPY REGIMEN MODIFICATION INDICATOR (TIME DELAY) (RETIRED)_ renamed from SYSTEMIC ANTI-CANCER THERAPY REGIMEN MODIFICATION INDICATOR (TIME DELAY)

Change to Data Element: Changed Name, Dataset, Description, status to Retired, linked Attribute

SYSTEMIC ANTI-CANCER THERAPY REGIMEN MODIFICATION INDICATOR (TIME DELAY)

Attribute:

[SYSTEMIC ANTI-CANCER THERAPY REGIMEN MODIFICATION INDICATOR](#)

SYSTEMIC ANTI-CANCER THERAPY REGIMEN MODIFICATION INDICATOR (TIME DELAY) (RETIRED)_ renamed from SYSTEMIC ANTI-CANCER THERAPY REGIMEN MODIFICATION INDICATOR (TIME DELAY)

Change to Data Element: Changed Name, Dataset, Description, status to Retired, linked Attribute

- Changed Name from Data Dictionary.Data Field Notes.S.Sy.SYSTEMIC ANTI-CANCER THERAPY REGIMEN MODIFICATION INDICATOR (TIME DELAY) to Retired.Data Dictionary.Data Field Notes.S.SYSTEMIC ANTI-CANCER THERAPY REGIMEN MODIFICATION INDICATOR (TIME DELAY)
- null
- Changed Description
- Retired SYSTEMIC ANTI-CANCER THERAPY REGIMEN MODIFICATION INDICATOR (TIME DELAY)
- null

SYSTEMIC ANTI-CANCER THERAPY TOXICITY MODIFICATION INDICATOR

Change to Data Element: New Data Element

Format/Length:	an1
National Codes:	See SYSTEMIC ANTI-CANCER THERAPY TOXICITY MODIFICATION INDICATOR
Default Codes:	

Notes:

SYSTEMIC ANTI-CANCER THERAPY TOXICITY MODIFICATION INDICATOR is the same as attribute **SYSTEMIC ANTI-CANCER THERAPY TOXICITY MODIFICATION INDICATOR**.

This data element is also known by these names:

Context	Alias
plural	SYSTEMIC ANTI-CANCER THERAPY TOXICITY MODIFICATION INDICATORS

SYSTEMIC ANTI-CANCER THERAPY TOXICITY MODIFICATION INDICATOR

Change to Data Element: New Data Element

SYSTEMIC ANTI-CANCER THERAPY TOXICITY MODIFICATION INDICATOR

Attribute:

[SYSTEMIC ANTI-CANCER THERAPY TOXICITY MODIFICATION INDICATOR](#)

TNM STAGE GROUPING (FINAL PRETREATMENT)

Change to Data Element: Changed Dataset

Format/Length: max an15
National Codes:
Default Codes:

Notes:

TNM STAGE GROUPING (FINAL PRETREATMENT) is a classification, using a **TNM CODING EDITION**, of the combination of **Tumour**, node and metastases into stage groupings before treatment.

UNIT OF MEASUREMENT (SNOMED CT DM+D)

Change to Data Element: Changed Dataset

Format/Length: See [DM+D CODE](#)
National Codes:
Default Codes:

Notes:

UNIT OF MEASUREMENT (SNOMED CT DM+D) is the same as attribute **CLINICAL TERMINOLOGY CODE**.

~~This item is being used for development purposes and has not yet been approved.~~ **UNIT OF MEASUREMENT (SNOMED CT DM+D)** is the **SNOMED CT®** concept ID from the **NHS Dictionary of Medicines and Devices** which is used to identify the **UNIT OF MEASUREMENT**.

UNIT OF MEASUREMENT (SYSTEMIC ANTI-CANCER THERAPY)

Change to Data Element: New Data Element

Format/Length: an2
National Codes: See [UNIT OF MEASUREMENT FOR SYSTEMIC ANTI-CANCER THERAPY](#)
Default Codes: 99 - Not Known (Not Recorded)

Notes:

UNIT OF MEASUREMENT (SYSTEMIC ANTI-CANCER THERAPY) is the same as attribute **UNIT OF MEASUREMENT FOR SYSTEMIC ANTI-CANCER THERAPY**.

This data element is also known by these names:

Context	Alias
plural	UNITS OF MEASUREMENT (SYSTEMIC ANTI-CANCER THERAPY)

UNIT OF MEASUREMENT (SYSTEMIC ANTI-CANCER THERAPY)

Change to Data Element: New Data Element

UNIT OF MEASUREMENT (SYSTEMIC ANTI-CANCER THERAPY)

Attribute:

[UNIT OF MEASUREMENT FOR SYSTEMIC ANTI-CANCER THERAPY](#)

SYSTEMIC ANTI-CANCER THERAPY DATA SET CONSTRAINTS

Change to XML Schema Constraint: New XML Schema Constraint

Data Set constraints applied to the [Systemic Anti-Cancer Therapy Data Set](#).

Data Element	Format/Length	Range	Pattern Match	Reason / Comment
LOCAL PATIENT IDENTIFIER (EXTENDED)	min an1 max an20	None	None	Existing Format/Length is max an20. Unable to change this as it is used in other data sets. Data Set allows min an1 max an20
ORGANISATION IDENTIFIER (CODE OF PROVIDER)	min an3 max an5	None	None	an6 is not applicable for the Systemic Anti-Cancer Therapy Data Set. Format pattern applied to allow correct reporting of ORGANISATION IDENTIFIER (CODE OF PROVIDER) .

SYSTEMIC ANTI-CANCER THERAPY DATA SET XML SCHEMA CONSTRAINTS (RETIRED)_ renamed from SYSTEMIC ANTI-CANCER THERAPY DATA SET XML SCHEMA CONSTRAINTS

Change to XML Schema Constraint: Changed Name, Dataset, Description, status to Retired

~~XML Schema constraints applied to the [Systemic Anti-Cancer Therapy Data Set](#). This item has been retired from the NHS Data Model and Dictionary.~~

~~The "Allowed Values" column indicates the NHS Data Model and Dictionary National Codes and Default Codes present in the XML Schema. The last live version of this item is available in the ?????? release of the NHS Data Model and Dictionary.~~

- ~~• None = The National Codes and Default Codes are included in the XML Schema~~
- ~~• Removed = The National Codes and Default Codes are not included in the XML Schema.~~

Data Element	XML Schema Format/Length	Allowed Values	Range	Pattern Match	Reason / Comment / XML Choice
CARE PROFESSIONAL MAIN SPECIALTY CODE (START SYSTEMIC ANTI-CANCER THERAPY)	None	Removed	None	None	National Codes and default codes not enumerated in the XML Schema
CONSULTANT CODE (INITIATED SYSTEMIC ANTI-CANCER THERAPY)	None	Removed	None	None	National Codes and default codes not enumerated in the XML Schema
ETHNIC CATEGORY	max an2	None	None	None	Existing Format/Length means fixed length which is incorrect. Unable to change this as it is used in other data sets. Second character can be for local use. Format/Length amended to max an2.
GENERAL MEDICAL PRACTICE CODE (PATIENT REGISTRATION)	min an3 max an12	Removed	None	None	Field size extended to future proof for ODS ORGANISATION CODE changes
ORGANISATION CODE (CODE OF PROVIDER)	min an3 max an12	Removed	None	None	Field size extended to future proof for ODS ORGANISATION CODE changes
PRIMARY DIAGNOSIS (ICD AT START SYSTEMIC ANTI-CANCER THERAPY)	None	None	None	None	XML choice required to allow recording of either or both of PRIMARY DIAGNOSIS (ICD AT START SYSTEMIC ANTI-CANCER THERAPY) / MORPHOLOGY (ICD-O AT

MORPHOLOGY (ICD-O AT START SYSTEMIC ANTI-CANCER THERAPY)	None				START SYSTEMIC ANTI-CANCER THERAPY) XML choice 1: One of two data items PRIMARY DIAGNOSIS (ICD AT START SYSTEMIC ANTI-CANCER THERAPY) or MORPHOLOGY (ICD-O AT START SYSTEMIC ANTI-CANCER THERAPY) must be present XML choice 2: PRIMARY DIAGNOSIS (ICD AT START SYSTEMIC ANTI-CANCER THERAPY) and MORPHOLOGY (ICD-O AT START SYSTEMIC ANTI-CANCER THERAPY) must be present
PERFORMANCE STATUS (ADULT)	None	0,1,2,3,4	None	None	Default Code 9 is not valid for the Systemic Anti-Cancer Therapy Data Set .
PERFORMANCE STATUS (YOUNG PERSON)	None	None			XML choice – optional to send, but if submitted one of PERFORMANCE STATUS (ADULT) or PERFORMANCE STATUS (YOUNG PERSON) is

Access to this version can be obtained by emailing information.standards@nhs.net with "NHS Data Model and Dictionary - Archive Request" in the email subject line.

SYSTEMIC ANTI-CANCER THERAPY DATA SET XML SCHEMA CONSTRAINTS (RETIRED)_ renamed from SYSTEMIC ANTI-CANCER THERAPY DATA SET XML SCHEMA CONSTRAINTS

Change to XML Schema Constraint: Changed Name, Dataset, Description, status to Retired

- **Changed Name** from **Data_Dictionary.Messages.Message_Documentation.XML_Schema_Constraints.Systemic_Anti-Cancer_Therapy_Data_Set_XML_Schema_Constraints** to **Retired.Data_Dictionary.Messages.Message_Documentation.Systemic_Anti-Cancer_Therapy_Data_Set_XML_Schema_Constraints**
- **null**
- **Changed Description**
- **Retired Systemic Anti-Cancer Therapy Data Set XML Schema Constraints**

For enquiries about this Change Request, please email information.standards@nhs.net

